

# ILS or LOC RWY 36

GRAND FORKS AFB (KRDR)

LOC I-RDR <b>109.9</b>	APCH CRS <b>357°</b>	Rwy Idg <b>12,351</b>
		TDZE <b>911</b>
		Arprt Elev <b>911</b>

[USAF]

RADAR or DME required



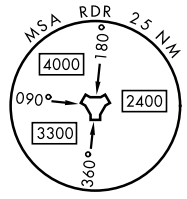
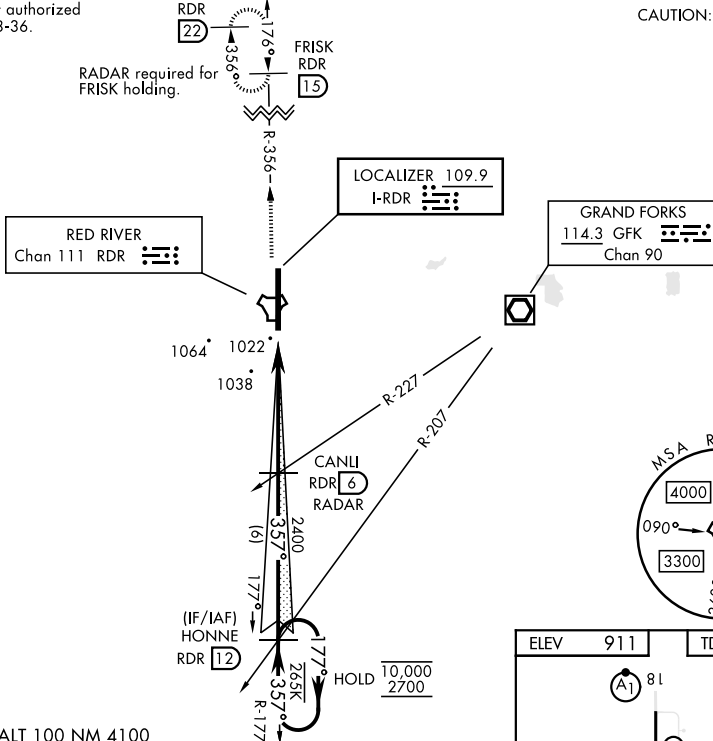
MISSED APPROACH: Climb to 3000 on RDR TACAN R-356 to FRISK and hold.

\* When ALS inop, increase RVR to 40 and vis to 3/4 mile.  
\*\* When ALS inop, increase CAT AB RVR to 55 and vis to 1 mile, CAT CDE vis to 1 1/2 miles.

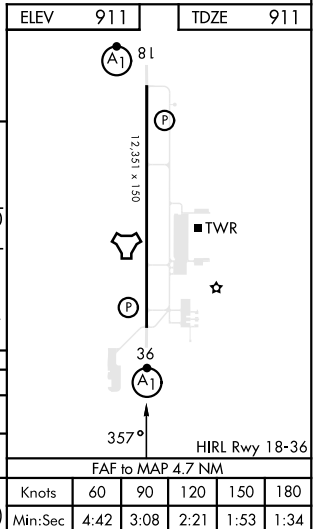
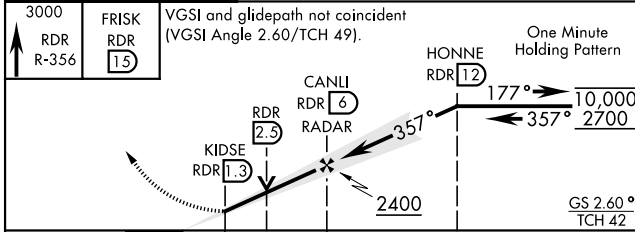
ATIS <b>273.45</b>	APP CON * <b>118.1 318.1</b>	RED RIVER TOWER * <b>124.9 349.0</b>	GND CON <b>119.15 275.8</b>	CLNC DEL <b>119.15 360.7</b>
-----------------------	---------------------------------	---	--------------------------------	---------------------------------

\*\*\* Circling not authorized E of Rwy 18-36.

CAUTION: Low TCH 42



EMERG SAFE ALT 100 NM 4100



CATEGORY	A	B	C	D	E
S-ILS 36 *	1111/24		200	(200-1/2)	
S-LOC 36 **	1440/24	529 (600-1/2)	1440/55	529	(600-1)
CIRCLING ***	1440-1	529 (600-1)	1440-1 1/2 529 (600-1/2)	1540-2 629 (700-2)	1560-2 1/4 649 (700-2 1/4)

FAF to MAP 4.7 NM					
Knots	60	90	120	150	180
Min:Sec	4:42	3:08	2:21	1:53	1:34

# ILS or LOC RWY 36

NC-1, 14 MAY 2026 to 11 JUN 2026

NC-1, 14 MAY 2026 to 11 JUN 2026