

GRAND FORKS, NORTH DAKOTA

# RNAV (GPS) RWY 18

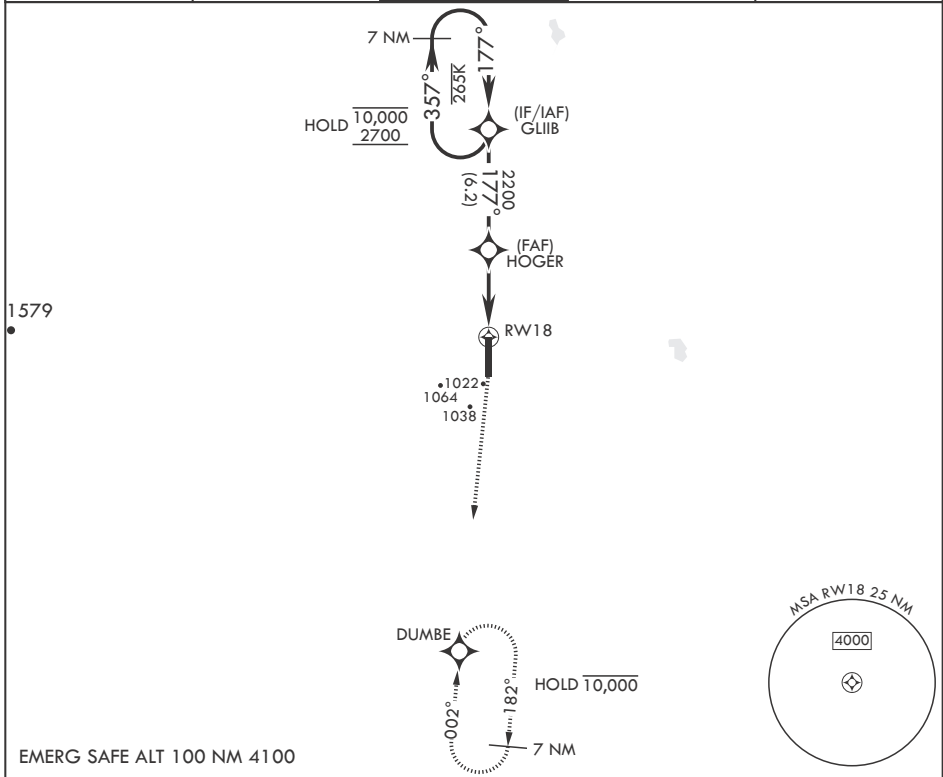
APCH CRS 177°	Rwy Idg 12,351	TDZE 900
	Arprt Elev 911	

(USAF)

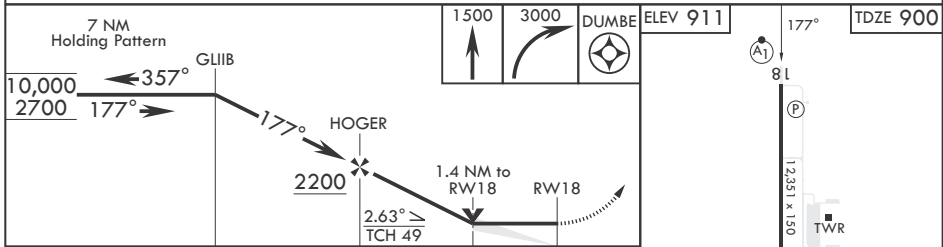
GRAND FORKS AFB (KRDR)

RNP APCH-GPS	ALSF-1 	MISSED APPROACH: Climb to 1500 then climbing right turn to 3000 direct DUMBE and hold.
* When ALS inop, increase CAT AB RVR to 55, vis to 1 mile; CAT CDE vis to 1 1/4 miles.		
** Circling E of Rwy 18-36 not authorized.		

ATIS 273.45	APP CON* 118.1 318.1	RED RIVER TOWER* 124.9 349.0	GND CON 119.15 275.8	CLNC DEL 119.15 360.7
----------------	-------------------------	---------------------------------	-------------------------	--------------------------



EMERG SAFE ALT 100 NM 4100



CATEGORY	A	B	C	D	E
LNAV MDA*	1340/24	440 (500-½)	1340/40	440	(500-¾)
<b>C</b> CIRCLING**	1340-1 429 (500-1)	1380-1 469 (500-1)	1380-1½ 469 (500-1½)	1540-2 629 (700-2)	1560-2¼ 649 (700-2¼)

HIRL all Rwys

GRAND FORKS, NORTH DAKOTA

47°58'N - 97°24'W

GRAND FORKS AFB (KRDR)

Orig 10AUG23

# RNAV (GPS) RWY 18

NC-1, 14 MAY 2026 to 11 JUN 2026

NC-1, 14 MAY 2026 to 11 JUN 2026