

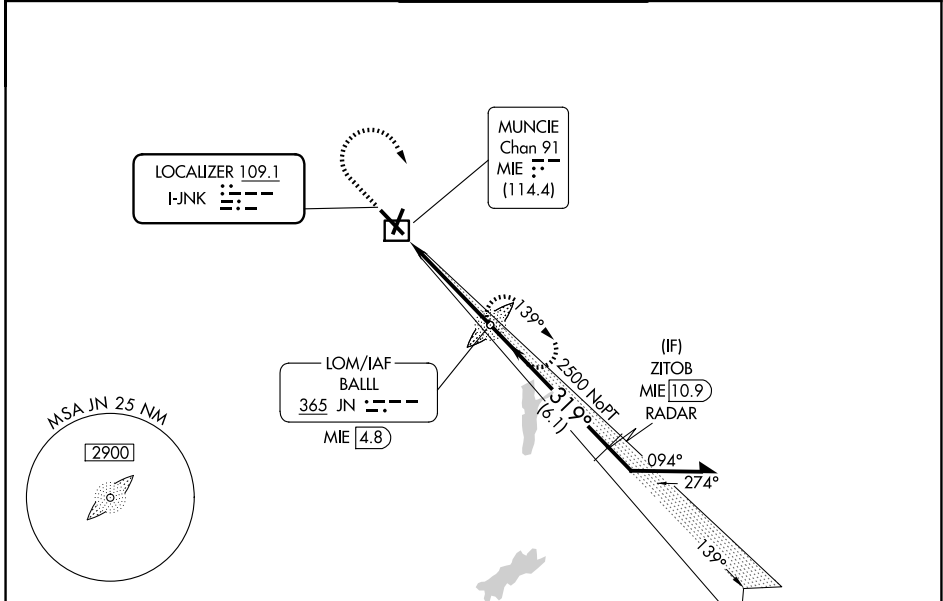
LOC I-JNK 109.1	APP CRS 319°	Rwy Ldg 6500
		TDZE 937
		Apt Elev 937

ILS or LOC RWY 32

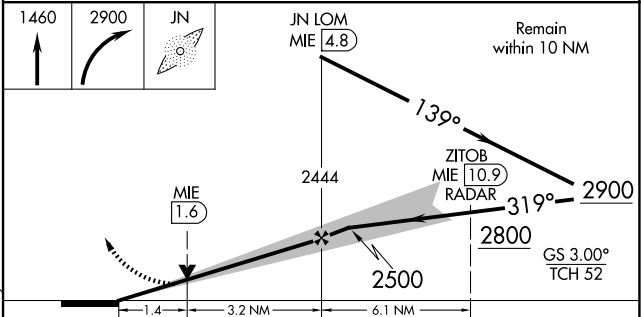
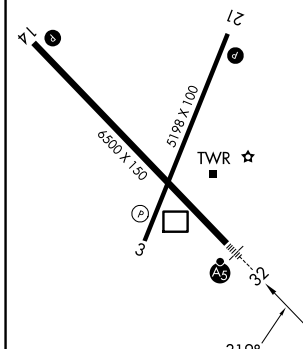
DELAWARE COUNTY RGNL (MIE)

ADF required. RADAR required for procedure entry.		MALSR	MISSED APPROACH: Climb to 1460 then climbing right turn to 2900 on direct BALL LOM and hold, continue climb-in-hold to 2900.
<p>⚠ When control tower closed, except for operators with approved weather reporting service, use FWA altimeter setting. DME from MIE DME. DME use requires simultaneous reception of I-JNK and MIE DME.</p>			

ATIS 133.25	INDIANAPOLIS APP CON 120.65 317.8	MUNCIE TOWER ★ 120.1 (CTAF) 0	GND CON 121.9	UNICOM 122.95
-----------------------	---	---	-------------------------	-------------------------



ELEV 937	D	TDZE 937
----------	----------	----------



CATEGORY	A	B	C	D
S-ILS 32		1162-1/2	225 (300-1/2)	
S-LOC 32	1460-1/2	523 (600-1/2)	1460-1	523 (600-1)
CIRCLING	1460-1	523 (600-1)	1500-1/2 563 (600-1/2)	1560-2 623 (700-2)

EC-2, 14 MAY 2026 to 11 JUN 2026

EC-2, 14 MAY 2026 to 11 JUN 2026