

WAAS CH 56401 W14A	APP CRS 139°	Rwy Ldg TDZE Apt Elev	6500 933 937
--	------------------------	-----------------------------	---

RNAV (GPS) RWY 14

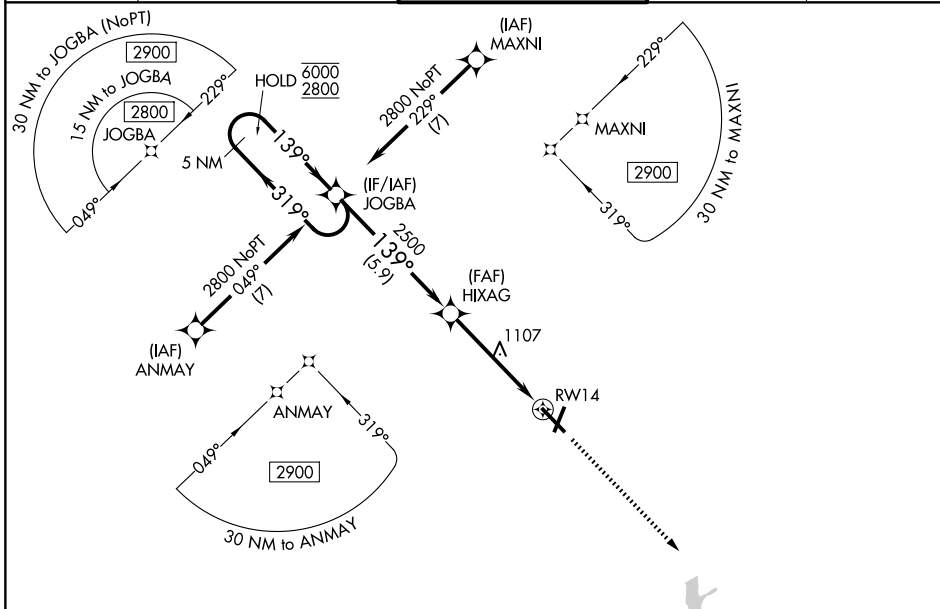
DELAWARE COUNTY RGNL (MIE)

RNP APCH - GPS.

⚠ For uncompensated Baro-VNAV systems, LNAV/VNAV NA below -17°C or above 54°C. Baro-VNAV and VDP NA when using FWA altimeter setting. When local altimeter not received, use FWA altimeter setting and increase LPV DA to 1254 feet and all visibilities ¼ SM. Increase LNAV/VNAV DA to 1339 feet and all visibilities ¼ SM. Increase all MDAs 140 feet and LNAV visibility Cat C/D ¾ SM, and Circling visibility Cat C/D ½ SM.

MISSED APPROACH:
Climb to 2900 direct CITUK and hold.

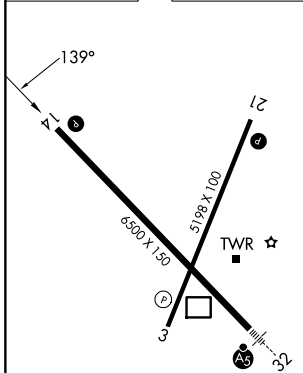
ATIS 133.25	INDIANAPOLIS APP CON 120.65 317.8	MUNCIE TOWER ★ 120.1 (CTAF) 0	GND CON 121.9	UNICOM 122.95
-----------------------	---	---	-------------------------	-------------------------



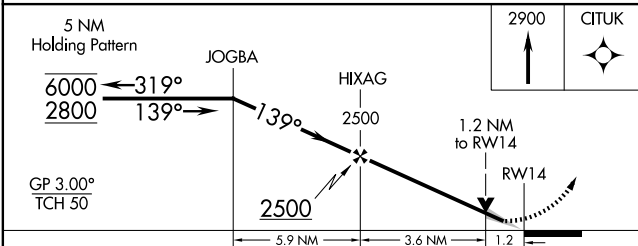
EC-2, 14 MAY 2026 to 11 JUN 2026

EC-2, 14 MAY 2026 to 11 JUN 2026

ELEV 937	D	TDZE 933
----------	----------	----------



HIRL Rwy 14-32 **Ⓛ**
MIRL Rwy 3-21 **Ⓛ**
REL Rwy 3, 14 and 21 **Ⓛ**



CATEGORY	A	B	C	D
LPV DA		1133- ³ / ₄	200 (200- ³ / ₄)	
LNAV/VNAV DA		1218- ⁷ / ₈	285 (300- ⁷ / ₈)	
LNAV MDA	1360-1	427 (500-1)	1360-1 ¹ / ₄	427 (500-1 ¹ / ₄)
CIRCLING	1400-1	463 (500-1)	1500-1 ¹ / ₂ 563 (600-1 ¹ / ₂)	1560-2 623 (700-2)