

WAAS CH 53537 W21A	APP CRS 205°	Rwy Ldg TDZE Apt Elev	5197 935 937
--	------------------------	-----------------------------	---

RNAV (GPS) RWY 21

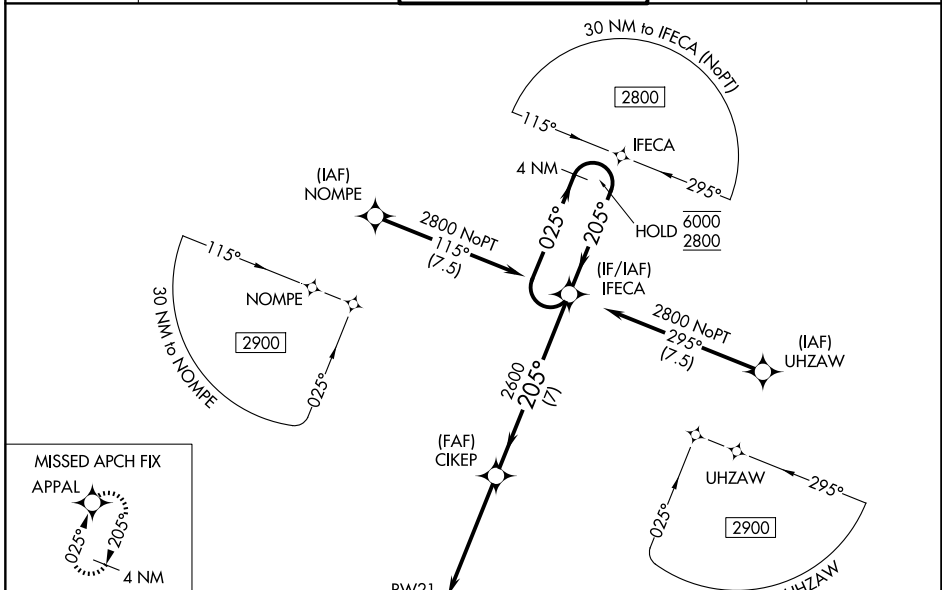
DELAWARE COUNTY RGNL (MIE)

RNP APCH - GPS.

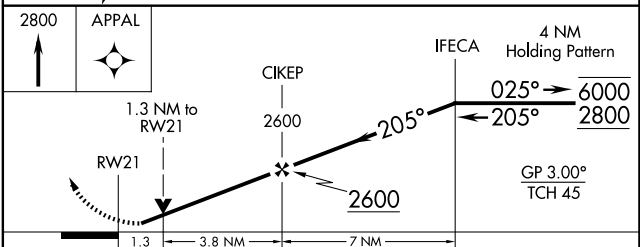
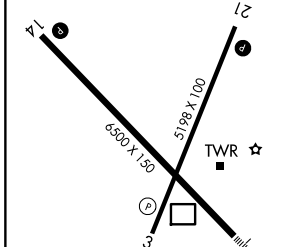
⚠ For uncompensated Baro-VNAV systems, LNAV/VNAV NA below -17°C or above 54°C. Rwy 21 helicopter visibility reduction below 3/4 SM NA. Baro-VNAV and VDP NA when using FWA altimeter setting. When local altimeter setting not received, use FWA altimeter setting and increase LPV DA to 1316 feet and all visibilities 3/8 SM. Increase LNAV/VNAV DA to 1472 feet and all visibilities 3/8 SM. Increase all MDAs 140 feet and LNAV visibility Cat C/D 3/8 SM, and Circling visibility Cat C/D 1/2 SM.

MISSED APPROACH: Climb to 2800 direct APPAL and hold.

ATIS 133.25	INDIANAPOLIS APP CON 120.65 317.8	MUNCIE TOWER ★ 120.1 (CTAF) 0	GND CON 121.9	UNICOM 122.95
-----------------------	---	--	-------------------------	-------------------------



ELEV 937	D	TDZE 935
----------	----------	----------



CATEGORY	A	B	C	D
LPV DA		1195-3/4	260 (300-3/4)	
LNAV/VNAV DA		1351-1 1/8	416 (500-1 1/8)	
LNAV MDA	1400-1	465 (500-1)	1400-1 3/8	465 (500-1 3/8)
CIRCLING	1460-1	523 (600-1)	1500-1 1/2	1600-2
			563 (600-1 1/2)	663 (700-2)

HIRL Rwy 14-32 **1**
 MIRL Rwy 3-21 **1**
 REIL Rwy 3, 14 and 21 **1**

EC-2, 14 MAY 2026 to 11 JUN 2026

EC-2, 14 MAY 2026 to 11 JUN 2026