

WAAS CH <b>78237</b> <b>W03A</b>	APP CRS <b>025°</b>	Rwy Ldg <b>5197</b> TDZE <b>937</b> Apt Elev <b>937</b>
--	------------------------	---

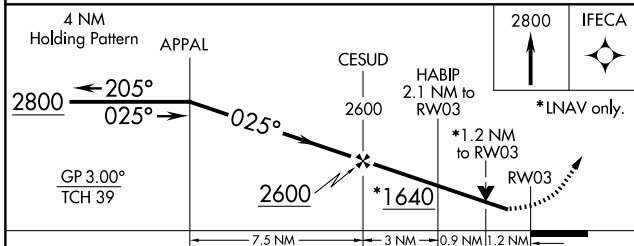
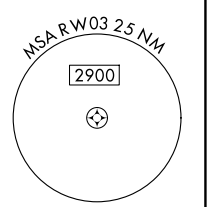
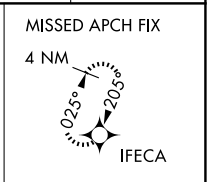
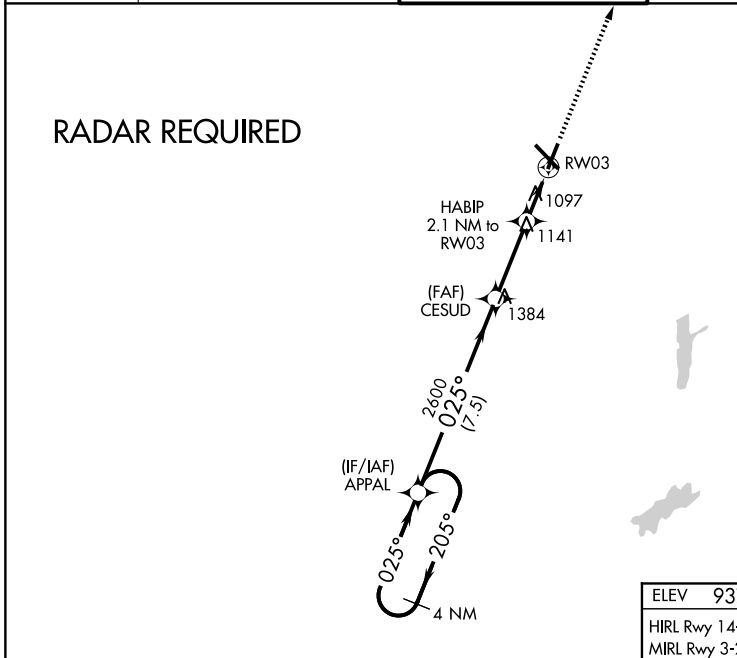
# RNAV (GPS) RWY 3

DELAWARE COUNTY RGNL (MIE)

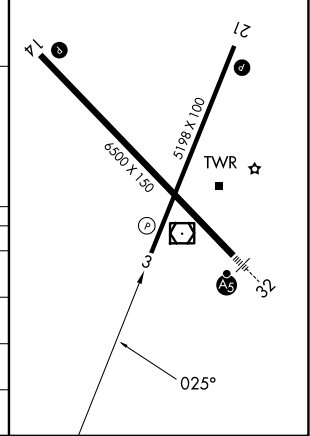
**⚠** For uncompensated Baro-VNAV systems, LNAV/VNAV NA below -20°C (-4°F) or above 54°C (130°F). DME/DME RNP-0.3 NA. When local altimeter setting not received, use Fort Wayne Intl altimeter setting and increase all DA 121 feet and all MDA 140 feet; increase LPV all Cats and LNAV Cats C/D visibility 3/8 mile, LNAV/VNAV all Cats visibility 7/8 mile and Circling Cats C/D visibility 1/2 mile. Baro-VNAV NA when using Fort Wayne Intl altimeter setting. Helicopter visibility reduction below 3/4 SM NA.

**MISSED APPROACH:**  
Climb to 2800 direct IFECA and hold.

ATIS <b>133.25</b>	INDIANAPOLIS APP CON <b>120.65 317.8</b>	MUNCIE TOWER ★ <b>120.1 (CTAF) 0</b>	GND CON <b>121.9</b>	UNICOM <b>122.95</b>
-----------------------	---	---	-------------------------	-------------------------



ELEV 937	D	TDZE 937
HIRL Rwy 14-32 0		
MIRL Rwy 3-21 0		
REL Rwy 3, 14 and 21 0		



CATEGORY	A	B	C	D
LPV DA		1190-7/8	253 (300-7/8)	
LNAV/VNAV DA		1412-1 5/8	475 (500-1 5/8)	
LNAV MDA	1360-1	423 (500-1)	1360-1 1/4	423 (500-1 1/4)
CIRCLING	1460-1	523 (600-1)	1500-1 1/2 563 (600-1 1/2)	1600-2 663 (700-2)

EC-2, 14 MAY 2026 to 11 JUN 2026

EC-2, 14 MAY 2026 to 11 JUN 2026