



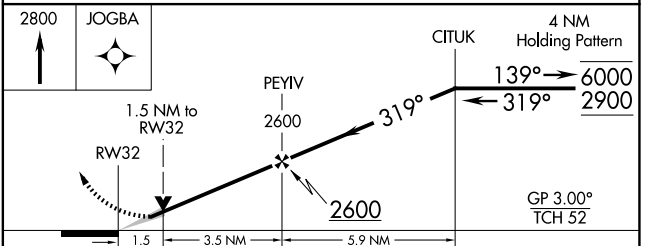
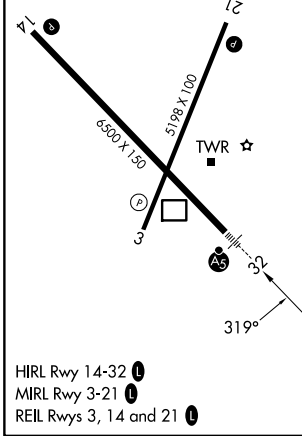
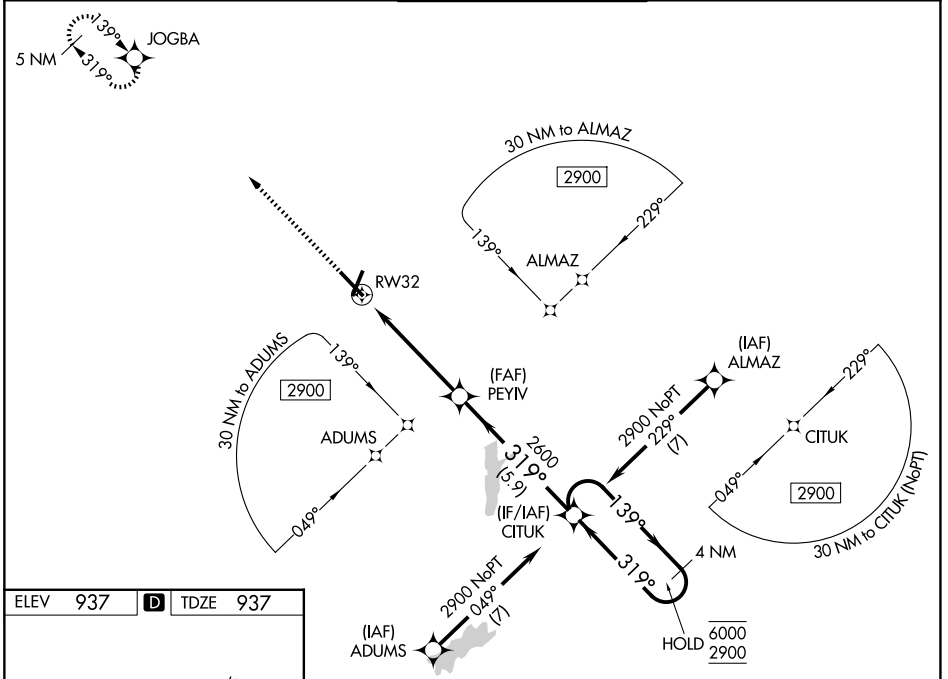
WAAS CH 72601 W32A	APP CRS 319°	Rwy Ldg TDZE Apt Elev	6500 937 937
--	------------------------	-----------------------------	---

RNAV (GPS) RWY 32

DELAWARE COUNTY RGNL (MIE)

RNP APCH - GPS.		MALSR		MISSED APPROACH: Climb to 2800 direct JOGBA and hold.
For uncompensated Baro-VNAV systems, LNAV/VNAV NA below -16°C or above 54°C. For inop ALS, increase all LPV Cats visibility to 1 1/4 SM, LNAV/VNAV to 1% SM.				

ATIS 133.25	INDIANAPOLIS APP CON 120.65 317.8	MUNCIE TOWER ★ 120.1 (CTAF) 0	GND CON 121.9	UNICOM 122.95
-----------------------	---	---	-------------------------	-------------------------



ELEV	937	D	TDZE	937
CATEGORY	A	B	C	D
LPV DA	1241-1/2 304 (400-1/2)			
LNAV/VNAV DA	1396-7/8 459 (500-7/8)			
LNAV MDA	1480-1/2 543 (600-1/2)		1480-1 543 (600-1)	
CIRCLING	1480-1 543 (600-1)		1500-1 5/8 563 (600-1 5/8)	1560-2 623 (700-2)

EC-2, 14 MAY 2026 to 11 JUN 2026

EC-2, 14 MAY 2026 to 11 JUN 2026