

MINOT, NORTH DAKOTA

COPTER RNAV (GPS) RWY 30

WAAS CH 91355 W30A	APCH CRS 298°	Rwy ldg TDZE Arprt Elev	13,198 1646 1666
--------------------------	------------------	-------------------------------	------------------------

AL-5013 (USAF)

MINOT AFB (KMIB)

* When ALS inop, increase CAT A RVR to 40, vis to 3/4 mile.
 ** When ALS inop, increase CAT A vis to 1 5/8 miles.
 *** When ALS inop, increase CAT A RVR to 55, vis to 1 mile.



MISSED APPROACH: Climb to 2100 then climbing right turn to 3600 direct JUSDU and hold, continue climb-in-hold to 3600.

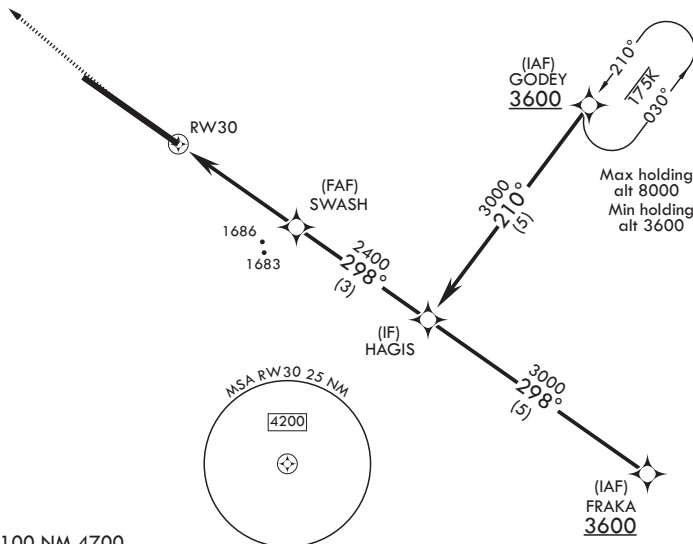
ATIS * 278.8	APP CON 119.6 363.8	TOWER * 120.65 253.5	GND CON 134.0 275.8	CLNC DEL 326.2
-----------------	------------------------	-------------------------	------------------------	-------------------

**** Circling NA NE of Rwy 12-30.

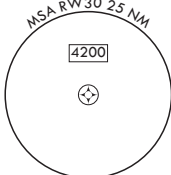
For uncompensated Baro-VNAV systems, procedure NA below 12°C (54°F) or above 54°C (130°F).



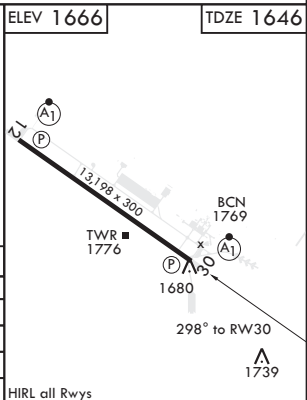
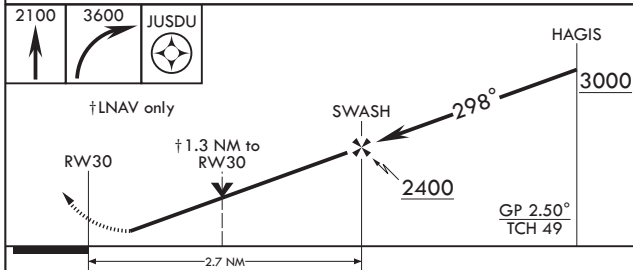
Max holding alt 6000
Min holding alt 3600



Max holding alt 8000
Min holding alt 3600



1874
EMERG SAFE ALT 100 NM 4700



CATEGORY	COPTER	
LPV DA*	1846/24	200 (200-1/4)
RNAV/VNAV DA**	2040/60	394 (400-1 1/2)
RNAV MDA***	2040/24	394 (400-1/2)
C CIRCLING****	2120-1	454 (500-1)

HIRL all Rwy's

MINOT, NORTH DAKOTA

48°25'N - 101°21'W

MINOT AFB (KMIB)

Orig 19JUL18

COPTER RNAV (GPS) RWY 30

NC-1, 14 MAY 2026 to 11 JUN 2026

NC-1, 14 MAY 2026 to 11 JUN 2026