

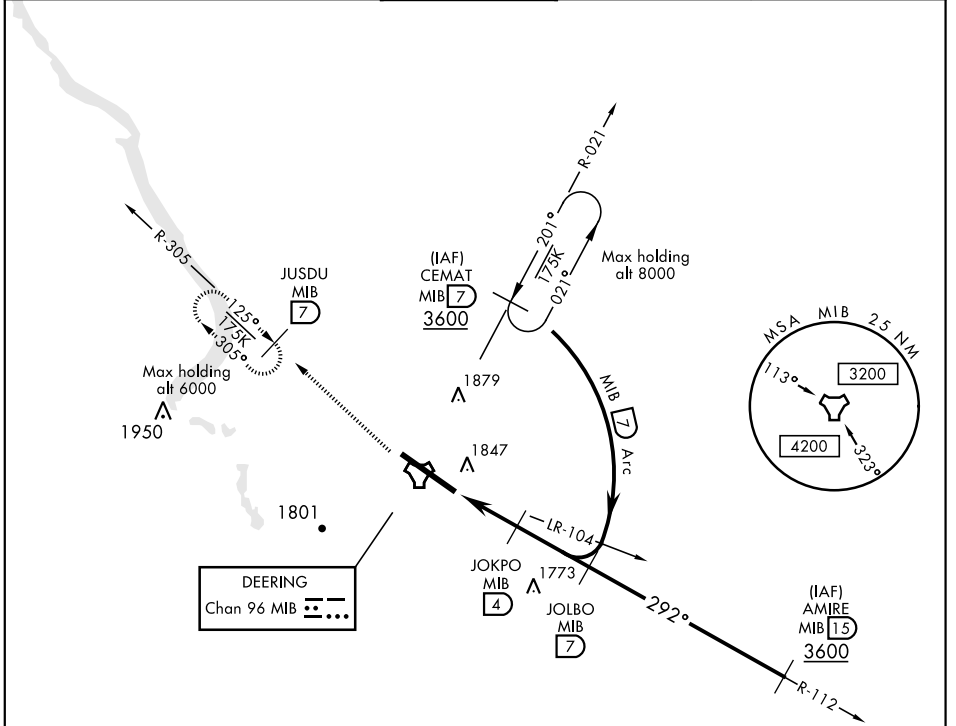
COPTER TACAN 292°

TACAN MIB Chan 96	APCH CRS 292°	Rwy ldg 13,198 TDZE 1646 Arprt Elev 1666	AL-5013 [USAF]	MINOT AFB (KMIB)
-----------------------------	-------------------------	---	----------------	------------------

* When ALS inop, increase RVR to 28 and vis to ½ mile.

ALSF-1  MISSED APPROACH: Climb to 3600 via MIB TACAN R-305 direct JUSDU and hold.

ATIS ★ 278.8	MINOT APP CON 119.6 363.8	MINOT TOWER ★ 120.65 253.5	GND CON 134.0 275.8	CLNC DEL 326.2
------------------------	-------------------------------------	--------------------------------------	-------------------------------	--------------------------

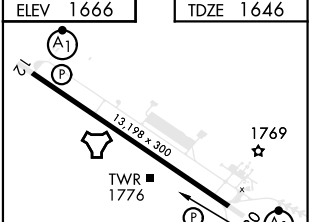


NC-1, 14 MAY 2026 to 11 JUN 2026

NC-1, 14 MAY 2026 to 11 JUN 2026

COPTER ONLY

EMERG SAFE ALT 100 NM 4700

3600 MIB R-305	JUSDU MIB 7	JOKPO 4	JOLBO R-112 7	ELEV 1666	TDZE 1646
TACAN	JULAM 1.7	2.9	3000		1769
3	2.3 NM	2400	2.54° TCH 49	TWR 1776	13,198 x 300
CATEGORY	COPTER				
H-292° *	2100/12	454	(500-¼)	292° to TACAN	

COPTER TACAN 292°