

# TACAN Y RWY 12

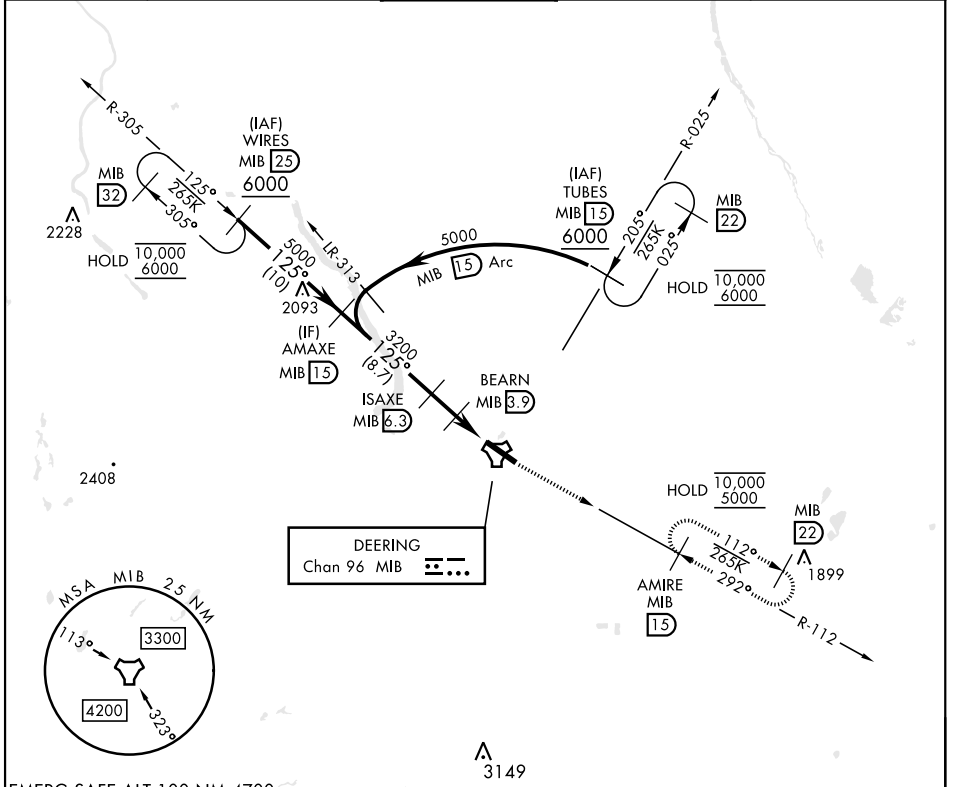
TACAN MIB Chan <b>96</b>	APCH CRS <b>125°</b>	Rwy Idg <b>13,198</b> TDZE <b>1666</b> Arpt Elev <b>1666</b>	[USAF]	MINOT AFB (KMIB)
-----------------------------	-------------------------	--	--------	------------------

\* When ALS inop, increase CAT AB RVR to 55, vis to 1 mile; ALSF-1  
 CAT CDE vis to 1 3/8 miles.

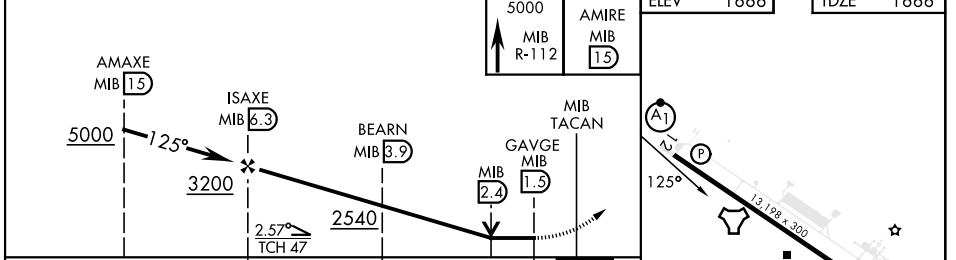
\*\* Circling not authorized N of Rwy 12-30.

MISSED APPROACH: Climb to 5000 via MIB TACAN R-112 direct AMIRE and hold.

ATIS ★ <b>278.8</b>	MINOT APP CON <b>119.6 363.8</b>	MINOT TOWER ★ <b>120.65 253.5</b>	GND CON <b>134.0 275.8</b>	CLNC DEL <b>326.2</b>
------------------------	-------------------------------------	--------------------------------------	-------------------------------	--------------------------



EMERG SAFE ALT 100 NM 4700



CATEGORY	A	B	C	D	E
S-12*	2120/24	454 (500-1/2)	2120/45	454	(500-7/8)
CIRCLING**	2120-1 454 (500-1)	2140-1 474 (500-1)	2180-1 1/2 514 (600-1 1/2)	2320-2 654 (700-2)	2320-2 1/4 654 (700-2 1/4)

HIRL Rwy 12-30

MINOT, NORTH DAKOTA 48°25'N-101°21'W MINOT AFB (KMIB)

# TACAN Y RWY 12

NC-1, 14 MAY 2026 to 11 JUN 2026

NC-1, 14 MAY 2026 to 11 JUN 2026