

LOC I-ANB 111.5	APP CRS 052°	Rwy Ldg 7002
		TDZE 595
		Apt Elev 612

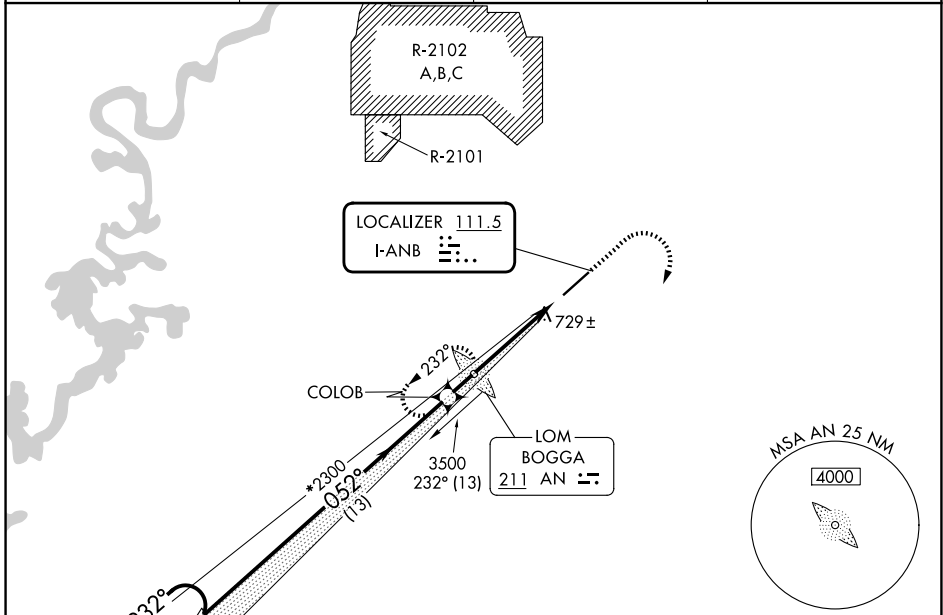
ILS Z or LOC Z RWY 5

ANNISTON RGNL (ANB)

⚠ Circling NA north of Rwy 5-23. ADF required. When local altimeter setting not received, use Gadsden altimeter setting: increase DA to 975 and all visibilities 1/4 SM; all MDAs 80 feet, and all Cat C visibilities 1/2 SM. For inop ALS increase S-ILS 5 all Cats visibility to 1 SM. For inop ALS when using Gadsden altimeter setting, increase S-ILS 5 all Cats visibility to 1 1/4 SM.

MALSR
MISSED APPROACH: Climb to 1600 then climbing right turn to 4000 on heading 110° then on BOGGA LOM 260° course to BOGGA LOM and hold.

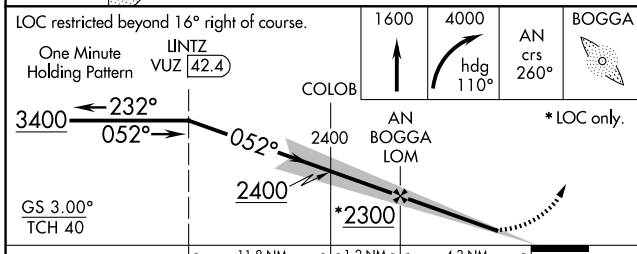
AWOS-3 119.675	BIRMINGHAM APP CON 132.15 285.45	CTAF 123.6	UNICOM 123.0
--------------------------	--	----------------------	------------------------



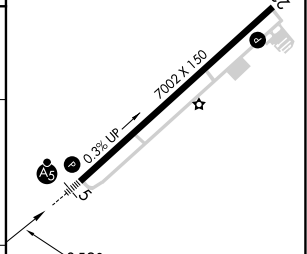
SE-4, 14 MAY 2026 to 11 JUN 2026

SE-4, 14 MAY 2026 to 11 JUN 2026

ADF REQUIRED



ELEV 612	TDZE 595
----------	----------



CATEGORY	A	B	C	D
S-ILS 5	909-1/2		314 (300-1/2)	
S-LOC 5	1120-1/2	525 (600-1/2)	1120-1 525 (600-1)	NA
CIRCLING	1420-1	808 (900-1)	1420-2 1/4 808 (900-2 1/4)	1820-3 1208 (1300-3)

REIL Rwy 23	1				
HIRL Rwy 5-23	1				
FAF to MAP	4.3 NM				
Knots	60	90	120	150	180
Min:Sec	4:18	2:52	2:09	1:43	1:26