

WAAS CH 78106 W05A	APP CRS 052°	Rwy Ldg 7002 TDZE 595 Apt Elev 612
--	------------------------	---

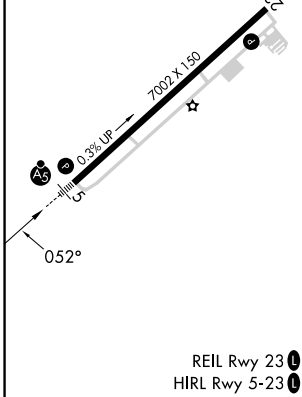
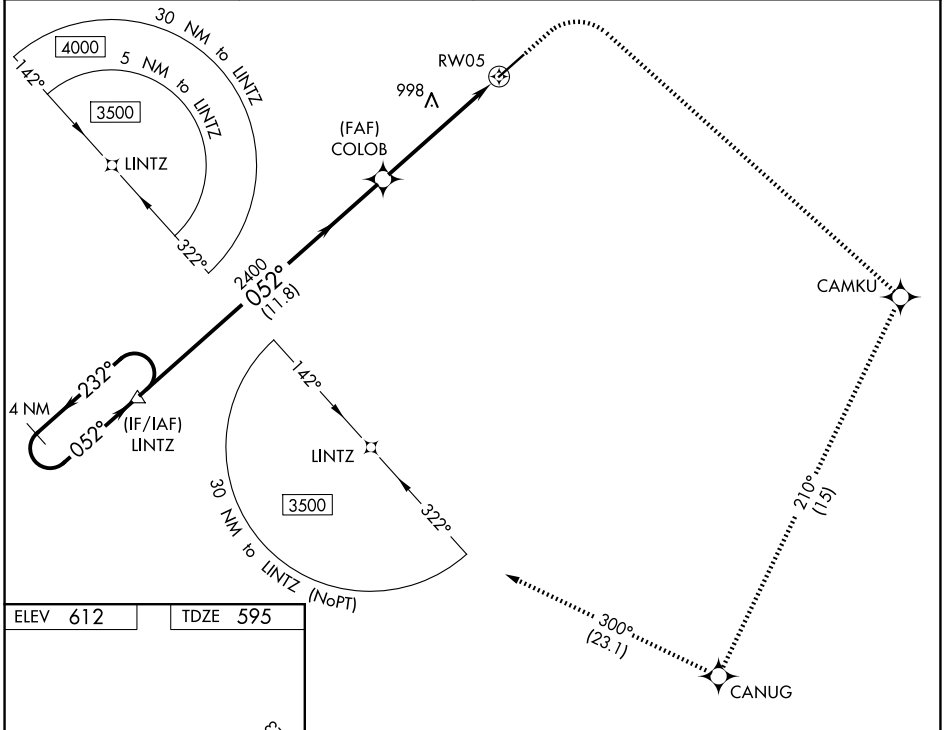
RNAV (GPS) RWY 5

ANNISTON RGNL (ANB)

⚠ Circling NA North of Rwy 5-23. DME/DME RNP-0.3 NA. When local altimeter setting not received, use Gadsden altimeter setting and increase all DA 66 feet and all MDA 80 feet and LPV all Cats, LNAV Cats C and D and Circling Cats A, B, and C visibility ¼ SM. For inop ALS increase LPV all Cats visibility to 1 SM. For inop ALS when using Gadsden altimeter setting, increase LPV all Cats visibility to 1½ SM. VDP NA with Gadsden altimeter setting.

MALSR MISSED APPROACH: Climb to 1600, then climbing right turn to 3500 direct CAMKU and track 210° to CANUG and track 300° to LINTZ and hold.

AWOS-3 119.675	BIRMINGHAM APP CON 132.15 285.45	CTAF 123.60	UNICOM 123.0
--------------------------	--	-----------------------	------------------------



ELEV 612	TDZE 595							
4 NM Holding Pattern	LINTZ	1600	3500	CAMKU	tr 210°	CANUG	tr 300°	LINTZ
3500	← 232°	052° →	052°	COLOB	2400	*1.7 NM to RW05	*LNAV only.	RW05
GP 3.00°	TCH 40				2400			
		11.8 NM	3.9 NM	1.7 NM				
CATEGORY	A	B	C	D				
LPV DA	909-5/8				314 (300-5/8)			
LNAV MDA	1160-1/2	565 (600-1/2)	1160-1/4	565 (600-1/4)				
CIRCLING	1420-1808 (900-1)		1420-2 1/4	808 (900-2 1/4)	1820-3	1208 (1300-3)		

SE-4, 14 MAY 2026 to 11 JUN 2026

SE-4, 14 MAY 2026 to 11 JUN 2026