

LOC/DME I-HWID <b>111.5</b> Chan <b>52</b>	APP CRS <b>288°</b>	Rwy Ldg TDZE Apt Elev	<b>5018</b> <b>50</b> <b>52</b>
--	------------------------	-----------------------------	---------------------------------------

# LOC RWY 28L

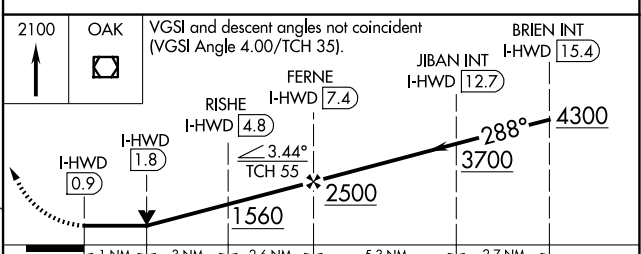
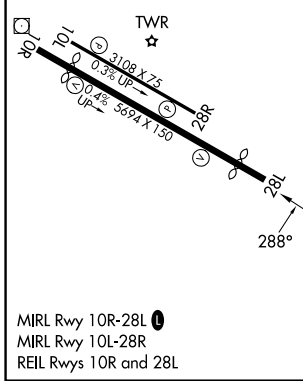
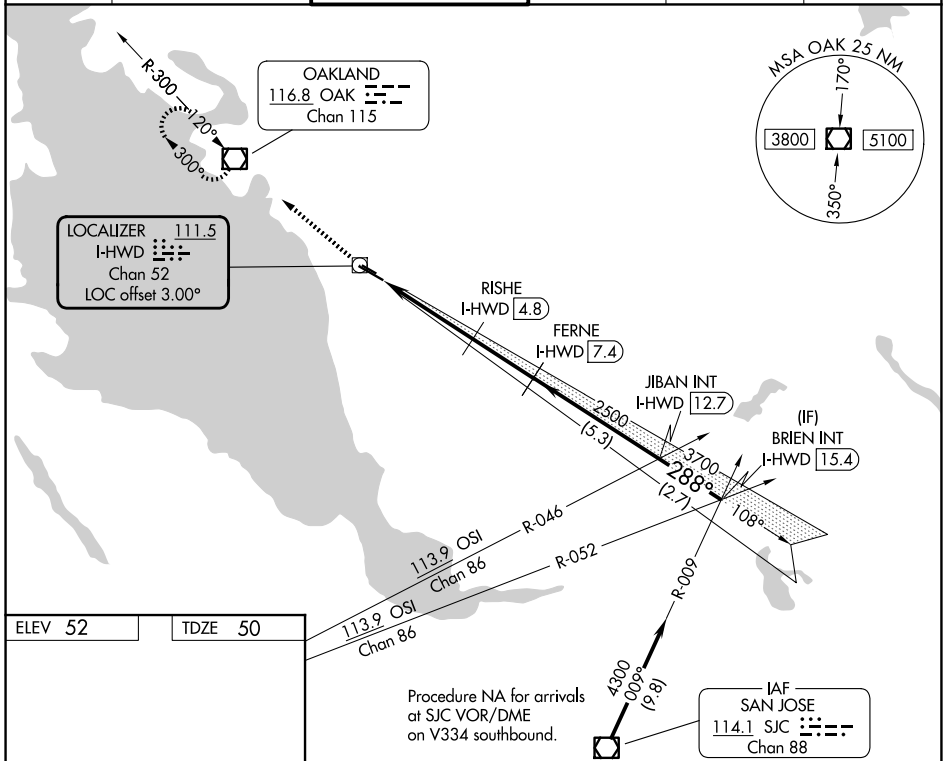
HAYWARD EXEC (HWD)

DME required.

**⚠** Rwy 28L helicopter visibility reduction below ¼ SM NA. Circling Rwy 10L, 28R NA at night. Circling NA north of Rwy 10L-28R. When local altimeter setting not received, use OAK altimeter setting and increase all MDAs 40 feet and Circling visibility Cat D ¼ SM.

MISSED APPROACH: Climb to 2100 direct OAK VOR/DME and hold.

ATIS <b>126.7</b>	NORCAL APP CON <b>124.4 351.8</b>	HAYWARD TOWER * <b>120.2 (CTAF) 257.8</b>	GND CON <b>121.4</b>	CLNC DEL <b>128.05</b>	UNICOM <b>122.95</b>
----------------------	--------------------------------------	--	-------------------------	---------------------------	-------------------------



CATEGORY	A	B	C	D
S-28L	500-1	450 (500-1)	500-1 3/8	450 (500-1 3/8)
CIRCLING	540-1	488 (500-1)	540-1 1/2 488 (500-1 1/2)	920-2 3/4 868 (900-2 3/4)

SW-2, 14 MAY 2026 to 11 JUN 2026

SW-2, 14 MAY 2026 to 11 JUN 2026