

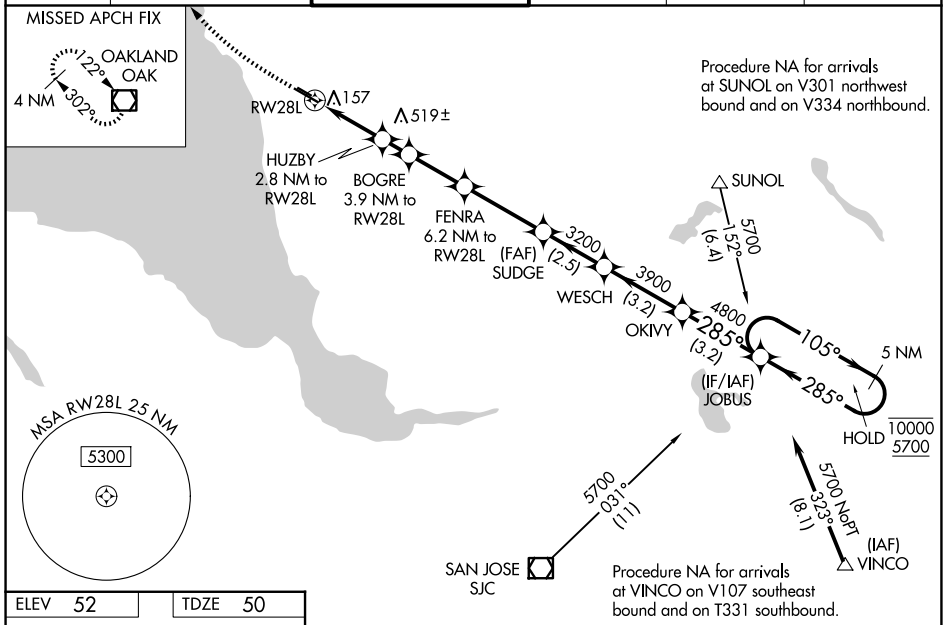
WAAS CH <b>40330</b> <b>W28A</b>	APP CRS <b>285°</b>	Rwy Ldg <b>5018</b> TDZE <b>50</b> Apr Elev <b>52</b>
--	------------------------	---

# RNAV (GPS) RWY 28L

HAYWARD EXEC (HWD)

RNP APCH - GPS.		<p><b>Baro-VNAV NA.</b> Circling Rwy 10L, 28R NA at night. Rwy 28L helicopter visibility reduction below 3/4 SM NA. When local altimeter setting not received, use OAK altimeter setting and increase LPV DA to 370 feet; increase LNAV/VNAV DA to 461 feet; increase all MDAs 40 feet and LNAV visibility Cat C/D 1/4 SM, and Circling visibility Cat D 1/4 SM. Circling NA north of Rwy 10L-28R.</p>		<p><b>MISSED APPROACH:</b> Climb to 600 then climbing right turn to 2100 direct OAK VOR/DME and hold.</p>	
-----------------	--	--	--	---	--

ATIS <b>126.7</b>	NORCAL APP CON <b>124.4 351.8</b>	HAYWARD TOWER* <b>120.2 (CTAF) 257.8</b>	GND CON <b>121.4</b>	CLNC DEL <b>128.05</b>	UNICOM <b>122.95</b>
----------------------	--------------------------------------	---	-------------------------	---------------------------	-------------------------



ELEV 52	TDZE 50	<p>600 2100 OAK</p> <p>↑ ↷ □</p> <p>VGSI and RNAV glidepath not coincident (VGSI Angle 4.00/TCH 35).</p>			
		<p>GP 3.10° TCH 35°</p>			
		<p>5 NM Holding Pattern</p>			
		<p>1000 1360 2120 3200 3900 4800 10000</p>			
<p>0.9 1.9 1.1 NM 2.3 NM 3.3 NM 2.5 NM 3.2 NM 3.2 NM</p>		<p>0.9 1.9 1.1 NM 2.3 NM 3.3 NM 2.5 NM 3.2 NM 3.2 NM</p>			
<p>CATEGORY A</p>		<p>CATEGORY B C D</p>			
<p>LPV DA</p>		<p>348-1 298 (300-1)</p>			
<p>LNAV/VNAV DA</p>		<p>439-1 1/8 389 (400-1 1/8)</p>			
<p>LNAV MDA</p>		<p>460-1 410 (500-1) 460-1 1/8 410 (500-1 1/8)</p>			
<p>CIRCLING</p>		<p>540-1 488 (500-1) 540-1 1/2 920-2 3/4 868 (900-2 3/4)</p>			