


APP CRS	Rwy Ldg	<b>8200</b>
<b>047°</b>	TDZE	<b>32</b>
	Apt Elev	<b>32</b>

# RNAV (GPS) RWY 5

PAGO PAGO INTL (PPG) (NSTU)

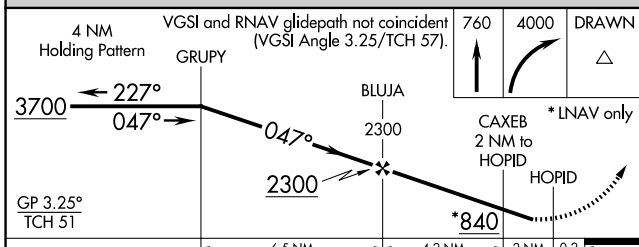
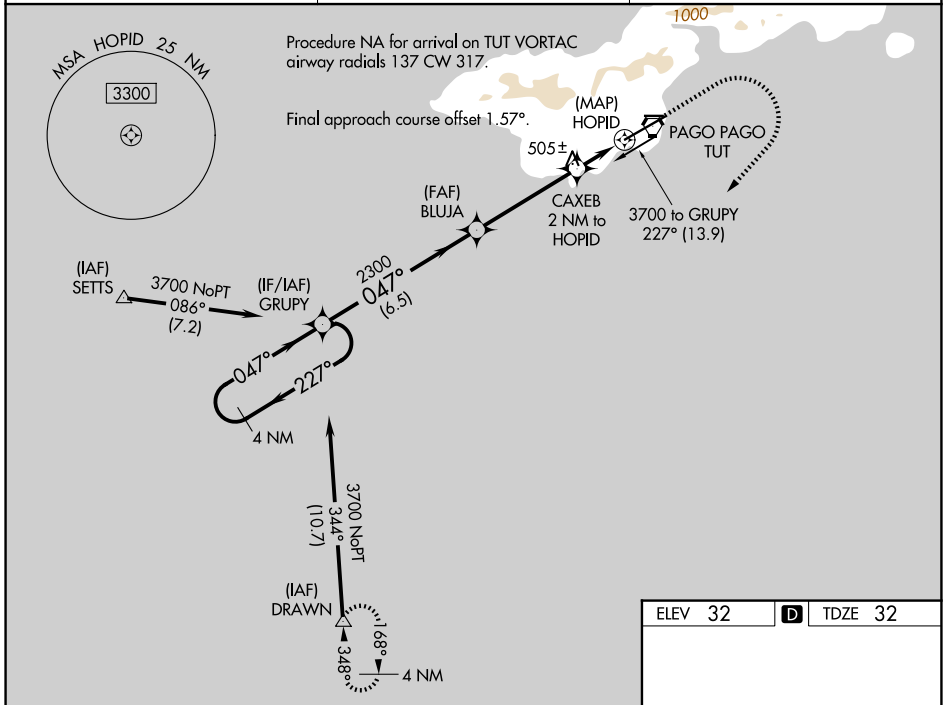
RNP APCH.

**⚠** For uncompensated Baro-VNAV systems, LNAV/VNAV NA below 22°C or above 54°C. When local altimeter setting not received, procedure NA. Circling NA northwest of Rwy 5-23. Rwy 5 helicopter visibility reduction below 3/4 SM NA. Inop table does not apply to LNAV Cats A/B. For inop ALS, increase LNAV/VNAV all Cats visibility to 1 1/2 SM and LNAV Cats C/D visibility to 2 SM.

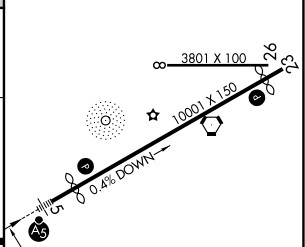
MALSR 

**MISSED APPROACH:**  
(Maintain 185 K max until 760) Climb to 760 then climbing right turn to 4000 direct DRAWN and hold.

FALEOLO APP CON <b>118.1 6.553 (HF)</b>	CTAF <b>122.9</b>	<b>118.30</b>
--	----------------------	---------------



ELEV 32	<b>D</b> TDZE 32
---------	------------------



CATEGORY	A	B	C	D
LNAV/VNAV DA	551-1		519 (600-1)	
LNAV MDA	760-1	728 (800-1)	760-1 5/8	728 (800-1 5/8)
CIRCLING	760-1	728 (800-1)	820-2 1/4 788 (800-2 1/4)	860-2 3/4 828 (900-2 3/4)

HIRL Rwys 5-23 and 8-26 **D**

PAC, 14 MAY 2026 to 09 JUL 2026

PAC, 14 MAY 2026 to 09 JUL 2026