

VORTAC TUT <b>112.5</b> Chan 72	APP CRS <b>238°</b>	Rwy Ldg TDZE Apt Elev	<b>N/A</b> <b>N/A</b> <b>31</b>
---------------------------------------	------------------------	-----------------------------	---------------------------------------

# VOR or TACAN-B

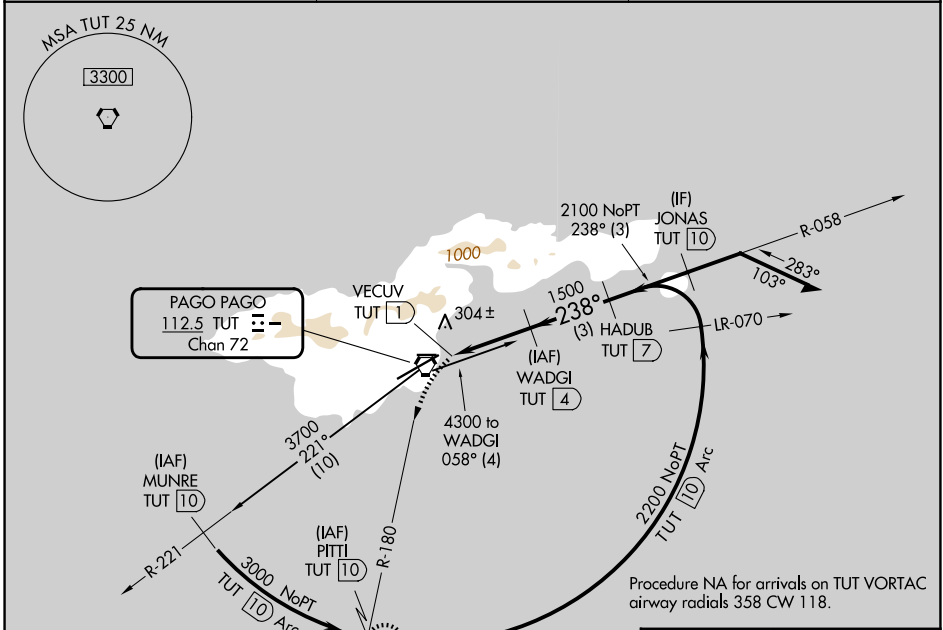
PAGO PAGO INTL (PPG) (NSTU)

DME required.

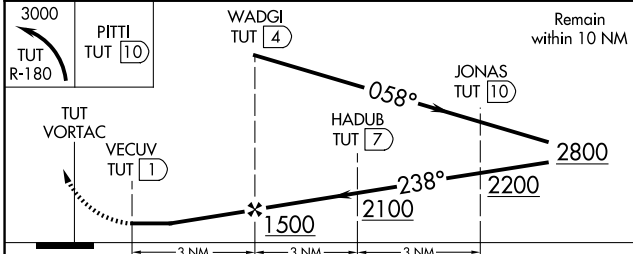
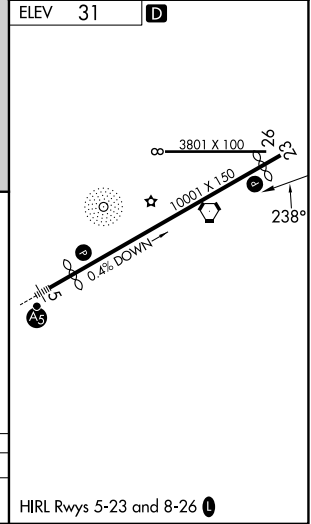
**▲**  
**▲** Circling NA northwest of Rwy 5-23.

MISSED APPROACH: Climbing left turn to 3000 on TUT VORTAC R-180 to PITTI/10 DME and hold, continue climb-in-hold to 3000.

FALEOLO APP CON <b>118.1 6.553 (HF)</b>	CTAF <b>122.9</b>	<b>118.30</b>
--	----------------------	---------------



Procedure NA for arrivals on TUT VORTAC airway radials 358 CW 118.



CATEGORY	A	B	C	D
CIRCLING	560-1 529 (600-1)	700-1 669 (700-1)	820-2¼ 789 (800-2¼)	860-2¾ 829 (900-2¾)

PAC, 14 MAY 2026 to 09 JUL 2026

PAC, 14 MAY 2026 to 09 JUL 2026