

WAAS CH 93803 W22A	APP CRS 224°	Rwy Idg TDZE Apt Elev	5628 296 297
--	------------------------	-----------------------------	---

RNAV (GPS) RWY 22

MOULTRIE MUNI (MGR)

RNP APCH - GPS.

⚠ Rwy 22 helicopter visibility reduction below 3/4 SM NA. Circling Rwy 16, 34 NA at night.
⚠ For uncompensated Baro-VNAV systems, LNAV/VNAV NA below -15°C or above 54°C.

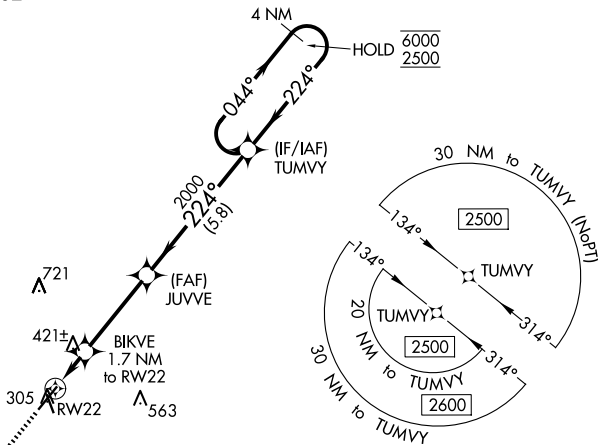
MISSED APPROACH: Climb to 2500 direct YALMI and hold.

AWOS-3PT
118.925

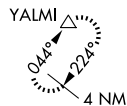
VALDOSTA APP CON ★
126.6 285.6

UNICOM
122.8 (CTAF) 0

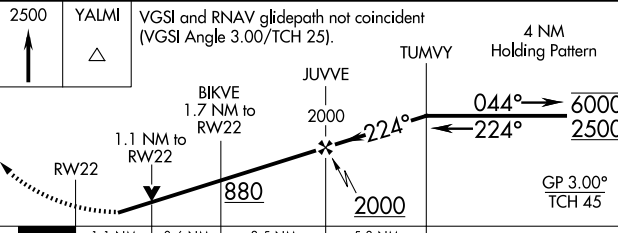
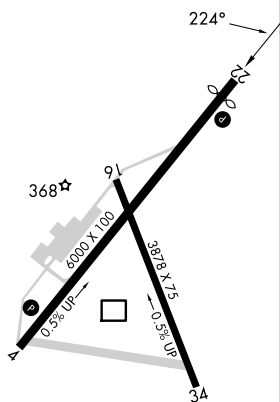
⚠ 1362



MISSED APCH FIX



ELEV 297 **D** TDZE 296



CATEGORY	A	B	C	D
LPV DA		600-1	304 (400-1)	
LNAV/VNAV DA		569-1	273 (300-1)	
LNAV MDA	680-1	384 (400-1)	680-1 1/8	384 (400-1 1/8)
C CIRCLING	720-1 423 (500-1)	760-1 463 (500-1)	860-1 1/2 563 (600-1 1/2)	1080-2 1/2 783 (800-2 1/2)

SE-4, 14 MAY 2026 to 11 JUN 2026

SE-4, 14 MAY 2026 to 11 JUN 2026