

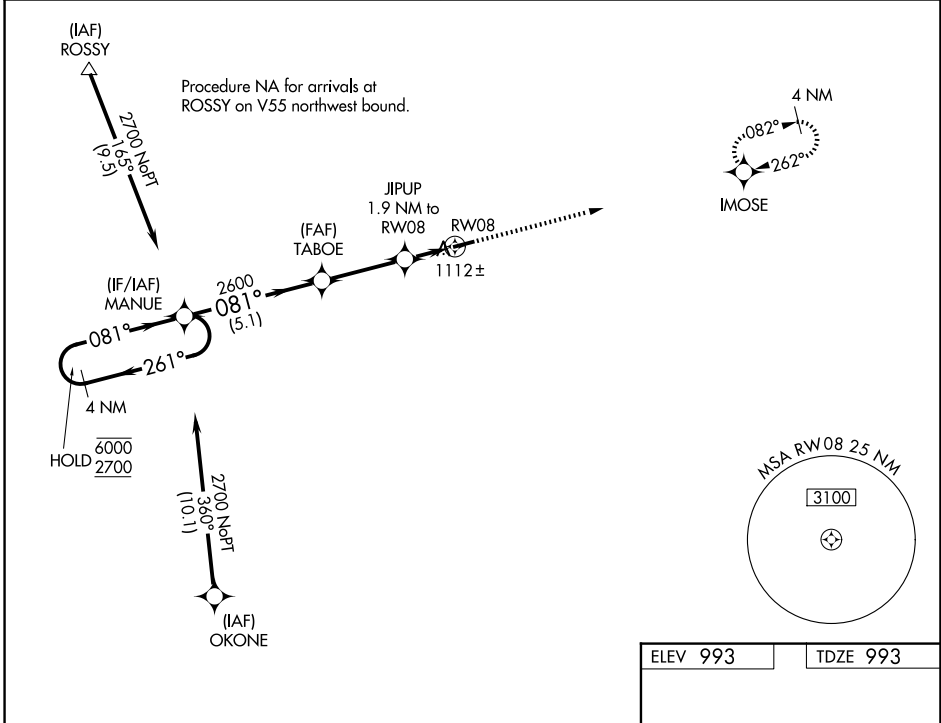
WAAS CH <b>48845</b> <b>W08A</b>	APP CRS <b>081°</b>	Rwy Ldg TDZE <b>993</b> Apt Elev <b>993</b>	<b>3998</b>
--	------------------------	---	-------------

# RNAV (GPS) RWY 8

PIQUA/HARTZELL FLD (I17)

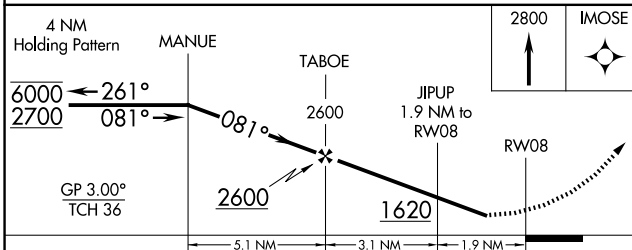
RNP APCH - GPS.	MISSED APPROACH: Climb to 2800 direct IMOSE and hold.
<p><b>∇</b> Rwy 8 helicopter visibility reduction below 3/4 SM NA.</p> <p><b>⚠</b> NA Baro-VNAV NA. Use VES altimeter setting.</p>	

DAY ASOS <b>125.8</b>	VES AWOS-3PT <b>125.9</b>	COLUMBUS APP CON <b>134.45 294.5 352.05</b>	UNICOM <b>123.0</b> (CTAF) <b>0</b>
--------------------------	------------------------------	--	--



EC-2, 14 MAY 2026 to 11 JUN 2026

EC-2, 14 MAY 2026 to 11 JUN 2026



ELEV 993	TDZE 993
----------	----------

MIRL Rwy 8-26 **0**  
REIL Rws 8 and 26 **0**

CATEGORY	A	B	C	D
LPV DA	1322-1	329 (400-1)		NA
LNAV/VNAV DA	1400-1 1/8	407 (500-1 1/8)		NA
LNAV MDA	1400-1	407 (500-1)	1400-1 1/8 407 (500-1 1/8)	NA
CIRCLING	1440-1 447 (500-1)	1560-1 567 (600-1)	1560-1 1/2 567 (600-1 1/2)	NA