

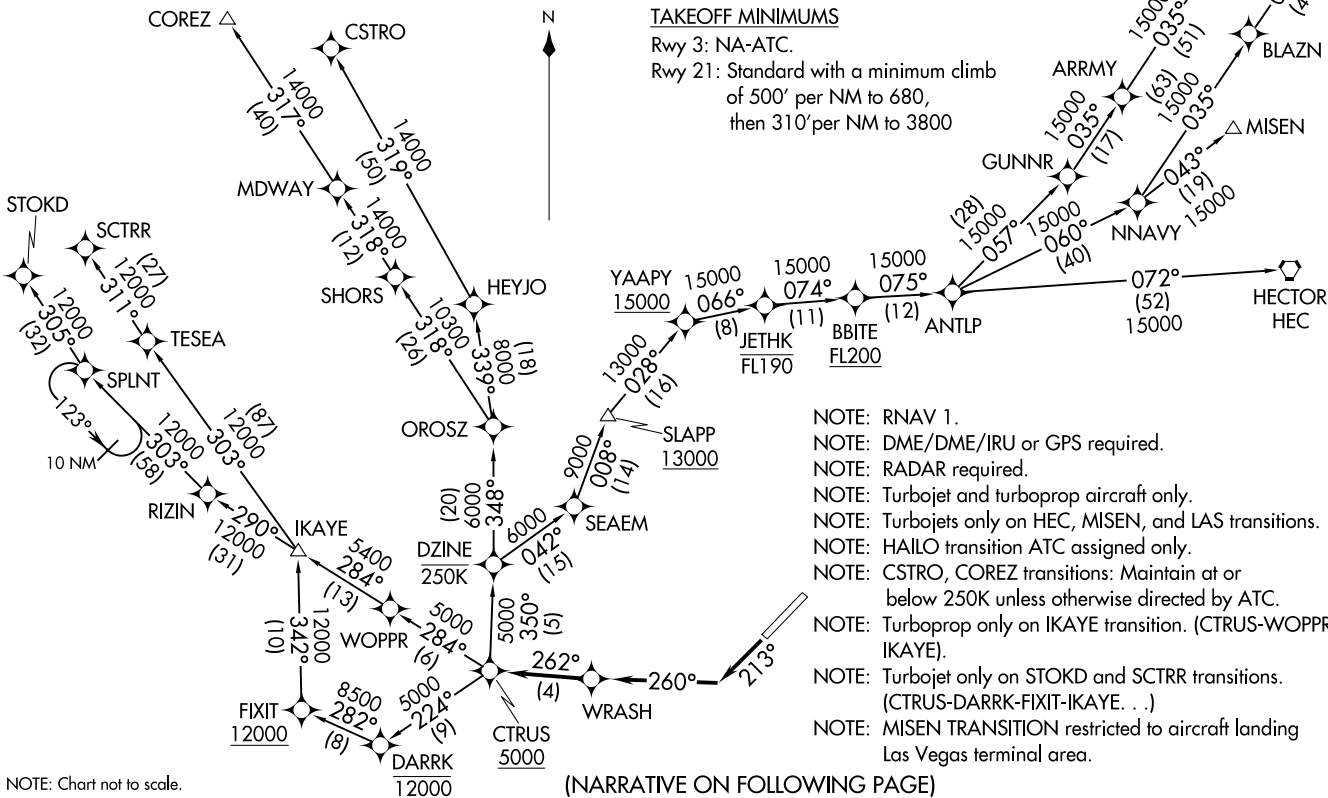
CTRUS FOUR DEPARTURE (RNAV)
(CTRUS4, CTRUS) 10SEP20

ATIS
119.15
SANTA MONICA TOWER*
120.1 257.8
SOCAL DEP CON
125.2 323.275

**TOP ALTITUDE:
IKAYE TRANSITION: AS ASSIGNED BY ATC;
ALL OTHER TRANSITIONS: FL230**

TAKEOFF MINIMUMS

Rwy 3: NA-ATC.
Rwy 21: Standard with a minimum climb
of 500' per NM to 680,
then 310' per NM to 3800



(NARRATIVE ON FOLLOWING PAGE)

NOTE: Chart not to scale.

SANTA MONICA, CALIFORNIA
SANTA MONICA MUNI (SMT0)

CTRUS FOUR DEPARTURE (RNAV)
20254

AI-5023 (FAA)

SANTA MONICA MUNI (SMT0)
SANTA MONICA, CALIFORNIA



DEPARTURE ROUTE DESCRIPTION

TAKEOFF RUNWAY 21: Climb on heading 213° to intercept course 260° to WRASH, then on track 262° to cross CTRUS at or above 5000, thence

. . . . on assigned transition, IKAYE transition maintain altitude as assigned by ATC, all other transitions maintain FL230. Expect filed altitude 10 minutes after departure.

COREZ TRANSITION (CTRUS4.COREZ)

CSTRO TRANSITION (CTRUS4.CSTRO)

HAILO TRANSITION (CTRUS4.HAILO)

HECTOR TRANSITION (CTRUS4.HEC)

IKAYE TRANSITION (CTRUS4.IKAYE)

LAS VEGAS TRANSITION (CTRUS4.LAS)

MISEN TRANSITION (CTRUS4.MISEN)

SCTRR TRANSITION (CTRUS4.SCTRR)

STOKD TRANSITION (CTRUS4.STOKD)

SW-3, 14 MAY 2026 to 11 JUN 2026

SW-3, 14 MAY 2026 to 11 JUN 2026