

PEVEE SIX DEPARTURE (RNAV)  
(PEVEE6, PEVEE) 01FEB18

SANTA MONICA, CALIFORNIA  
SANTA MONICA MUNI (SMO)

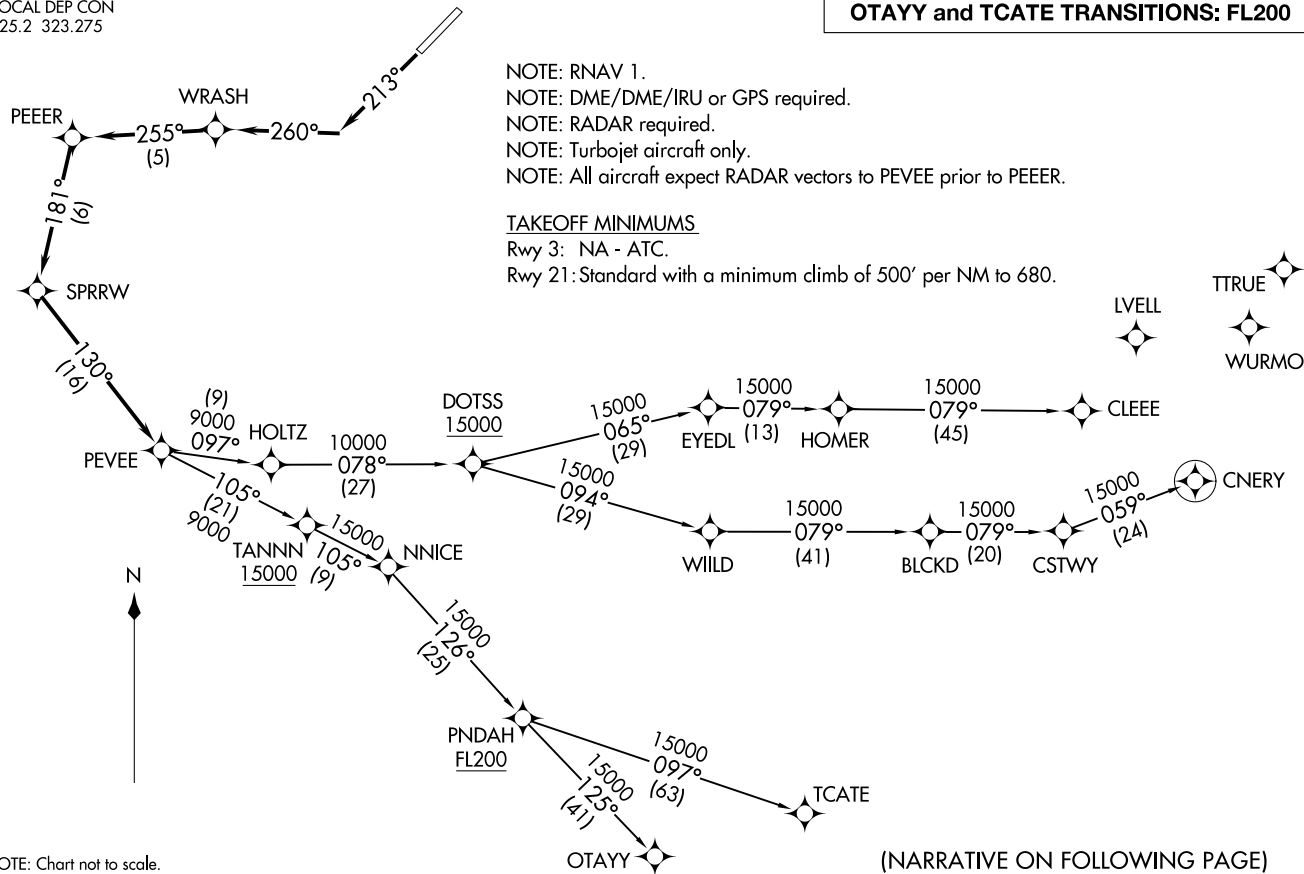
SANTA MONICA TOWER ★  
120.1 257.8  
SOCAL DEP CON  
125.2 323.275

**TOP ALTITUDE:**  
**CLEEE and CNERY TRANSITIONS: 17000;**  
**OTAYY and TCATE TRANSITIONS: FL200**

NOTE: RNAV 1.  
NOTE: DME/DME/IRU or GPS required.  
NOTE: RADAR required.  
NOTE: Turbojet aircraft only.  
NOTE: All aircraft expect RADAR vectors to PEVEE prior to PEEER.

TAKEOFF MINIMUMS

Rwy 3: NA - ATC.  
Rwy 21: Standard with a minimum climb of 500' per NM to 680.



(PEVEE6, PEVEE) 18032  
PEVEE SIX DEPARTURE (RNAV)

AL-5023 (FAA)

SANTA MONICA MUNI (SMO)  
SANTA MONICA, CALIFORNIA

NOTE: Chart not to scale.

(NARRATIVE ON FOLLOWING PAGE)



DEPARTURE ROUTE DESCRIPTION

TAKEOFF RUNWAY 21: Climb on heading 213° to intercept course 260° to WRASH, then on track 255° to PEEER, then on track 181° to SPRRW, then on track 130° to PEVEE, thence. . . .

. . . .on assigned transitions CLEEE and CNERY maintain 17000, OTAYY and TCATE transitions maintain FL200, expect filed altitude 10 minutes after departure.

LOST COMMUNICATIONS: In the event of lost communications, proceed via assigned transition.

CLEEE TRANSITION (PEVEE6.CLEEE)

CNERY TRANSITION (PEVEE6.CNERY)

OTAYY TRANSITION (PEVEE6.OTAYY)

TCATE TRANSITION (PEVEE6.TCATE)

SW-3, 14 MAY 2026 to 11 JUN 2026

SW-3, 14 MAY 2026 to 11 JUN 2026