

VOR/DME SMO 110.8 Chan 45	APP CRS 212°	Rwy Ldg TDZE N/A N/A	Apt Elev 170
--	------------------------	----------------------------	------------------------

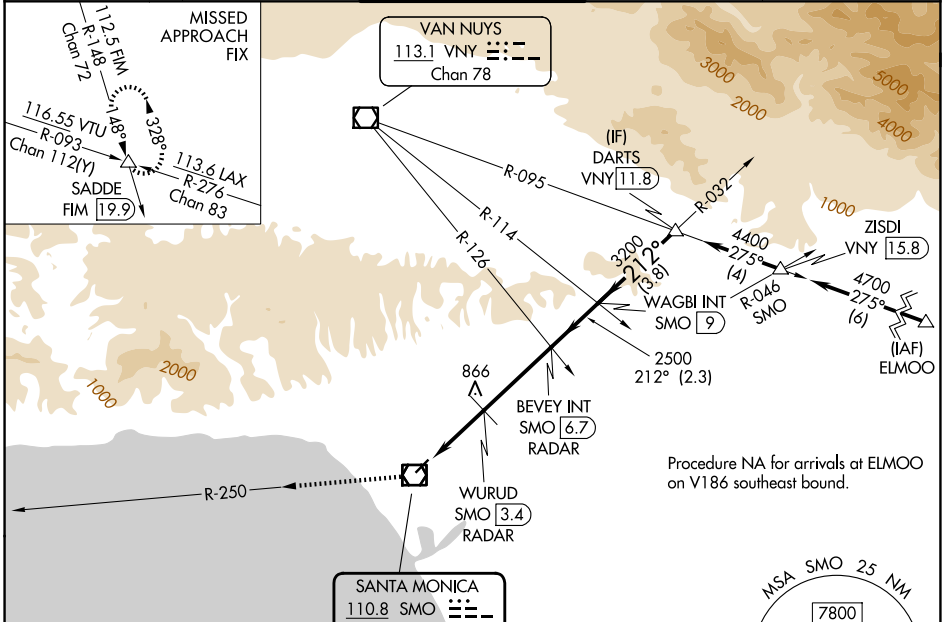
VOR-A

SANTA MONICA MUNI (SMO)

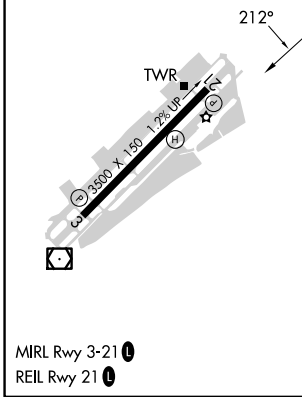
NA Circling NA northwest of Rwy 3-21.

MISSED APPROACH: Climb to 5000 on SMO VOR/DME R-250 and on FIM VORTAC R-148 to SADDE INT/19.9 DME and hold, continue climb-in-hold to 5000.

ATIS 119.15	SOCAL APP CON 135.05 317.5	SANTA MONICA TOWER * 120.1 (CTAF) 257.8	GND CON 121.9	UNICOM 122.95
-----------------------	--------------------------------------	--	-------------------------	-------------------------



ELEV 170	D
----------	----------



	SMO R-250	FIM R-148	SADDE	BEVEY INT SMO [6.7] RADAR	WAGBI INT SMO [9]	DARTS VNY [11.8]
	5000	5000	5000	4400	4400	4400
	1540	1540	1540	3200	3200	3200
	3.4 NM	3.2 NM	2.3 NM	3.8 NM		
CATEGORY	A	B	C	D		
CIRCLING	1540-1¼ 1370 (1400-1¼)	1540-1½ 1370 (1400-1½)	1540-3	1370 (1400-3)		
WURUD FIX MINIMUMS						
CIRCLING	1120-1¼ 950 (1000-1¼)		1180-3	1010 (1100-3)		

SW-3, 14 MAY 2026 to 11 JUN 2026

SW-3, 14 MAY 2026 to 11 JUN 2026