

| | | |
|--|------------------------|---|
| LOC/DME I-FFT 109.95 Chan 36 (Y) | APP CRS 249° | Rwy Ldg TDZE 790 Apt Elev 812 |
|--|------------------------|---|

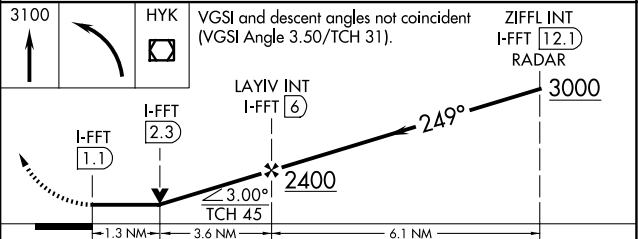
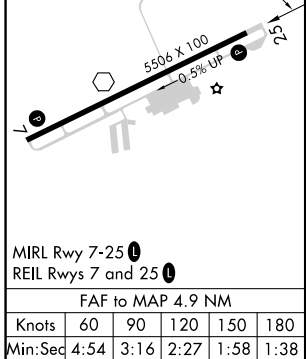
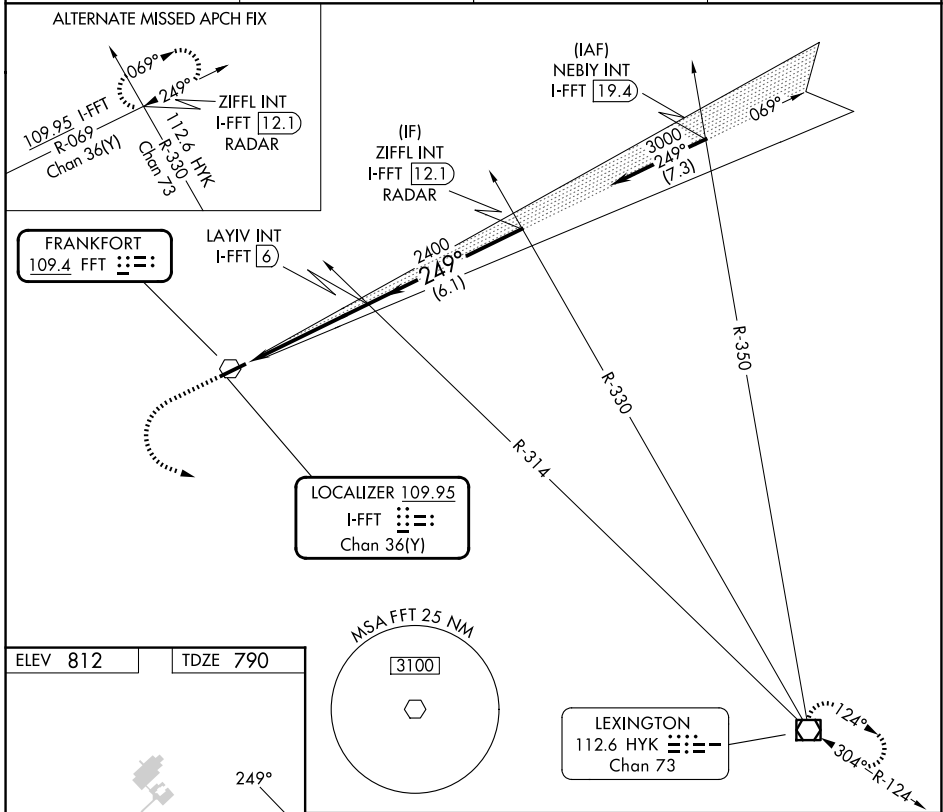
LOC RWY 25

CAPITAL CITY (F'F'T)

▼ Rwy 25 helicopter visibility reduction below 3/4 SM NA. When local altimeter setting not received, use Lexington altimeter setting and increase all MDA 80 feet. Increase S-25 Cats C/D visibility to 1 1/2 mile and Circling Cat C and D visibility 1/4 mile.

▲ NA MISSED APPROACH: Climb to 3100 then left turn direct HYK VOR/DME and hold.

| | | | |
|------------------------|--|---------------------------|---------------------------------|
| ASOS 119.275 | LEXINGTON APP CON 120.75 298.9 | CLNC DEL 118.65 | UNICOM 122.8 (CTAF) 0 |
|------------------------|--|---------------------------|---------------------------------|



| CATEGORY | A | B | C | D |
|----------|--------------------|--------------------|------------------------|--------------------|
| S-25 | 1280-1 490 (500-1) | | 1280-1 490 (500-1) | |
| CIRCLING | 1280-1 468 (500-1) | 1380-1 568 (600-1) | 1440-1 628 (700-1 3/4) | 1440-2 628 (700-2) |

SE-1, 14 MAY 2026 to 11 JUN 2026

SE-1, 14 MAY 2026 to 11 JUN 2026