

VOR FFT <b>109.4</b>	APP CRS <b>251°</b>	Rwy Ldg TDZE Apt Elev	<b>5506</b> <b>790</b> <b>813</b>
-------------------------	------------------------	-----------------------------	---

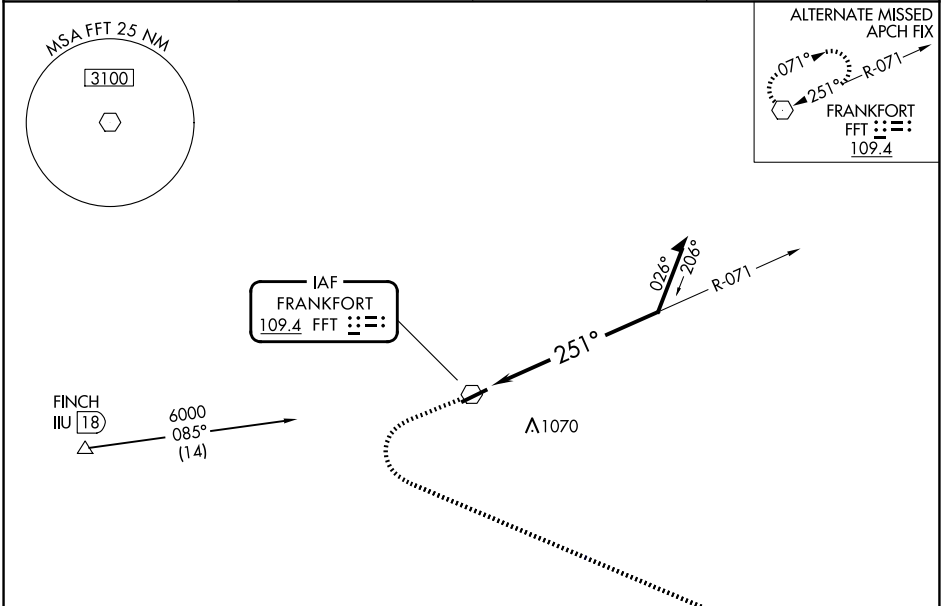
# VOR RWY 25

CAPITAL CITY (F'F'T)

**⚠** Rwy 25 helicopter visibility reduction below 3/4 SM NA. When local altimeter setting not received, use LEX altimeter setting and increase all MDAs 80 feet and S-25 visibility Cat C/D 1/2 SM, increase Circling Cat C 1/2 SM, and Cat D 1/4 SM.

**MISSED APPROACH:**  
Climb to 3100 then left turn direct HYK VOR/DME and hold.

ASOS <b>119.275</b>	LEXINGTON APP CON <b>120.75 298.9</b>	CLNC DEL <b>118.65</b>	UNICOM <b>122.8 (CTAF) 0</b>
------------------------	--	---------------------------	---------------------------------



ELEV 813	TDZE 790	MISSED APCH FIX																
3100	HYK	Remain within 10 NM																
↑	↻	FFT VOR	2700															
<table border="1"> <thead> <tr> <th>CATEGORY</th> <th>A</th> <th>B</th> <th>C</th> <th>D</th> </tr> </thead> <tbody> <tr> <td>S-25</td> <td>1440-1</td> <td>650 (700-1)</td> <td>1440-1<math>\frac{7}{8}</math></td> <td>650 (700-1<math>\frac{7}{8}</math>)</td> </tr> <tr> <td>CIRCLING</td> <td>1440-1</td> <td>627 (700-1)</td> <td>1440-1<math>\frac{7}{8}</math> 627 (700-1<math>\frac{7}{8}</math>)</td> <td>1440-2 627 (700-2)</td> </tr> </tbody> </table>				CATEGORY	A	B	C	D	S-25	1440-1	650 (700-1)	1440-1 $\frac{7}{8}$	650 (700-1 $\frac{7}{8}$ )	CIRCLING	1440-1	627 (700-1)	1440-1 $\frac{7}{8}$ 627 (700-1 $\frac{7}{8}$ )	1440-2 627 (700-2)
CATEGORY	A	B	C	D														
S-25	1440-1	650 (700-1)	1440-1 $\frac{7}{8}$	650 (700-1 $\frac{7}{8}$ )														
CIRCLING	1440-1	627 (700-1)	1440-1 $\frac{7}{8}$ 627 (700-1 $\frac{7}{8}$ )	1440-2 627 (700-2)														

SE-1, 14 MAY 2026 to 11 JUN 2026

SE-1, 14 MAY 2026 to 11 JUN 2026