

APP CRS	Rwy Ldg	<b>4977</b>
<b>090°</b>	TDZE	<b>35</b>
	Apt Elev	<b>40</b>

# RNAV (GPS) RWY 9

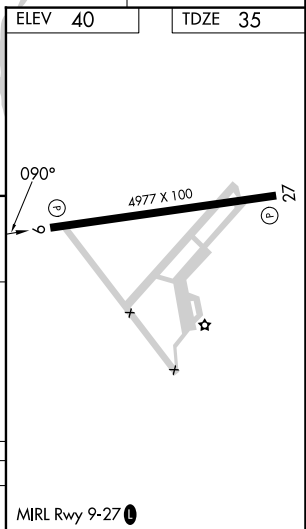
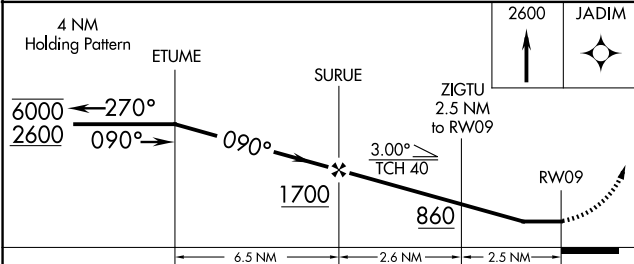
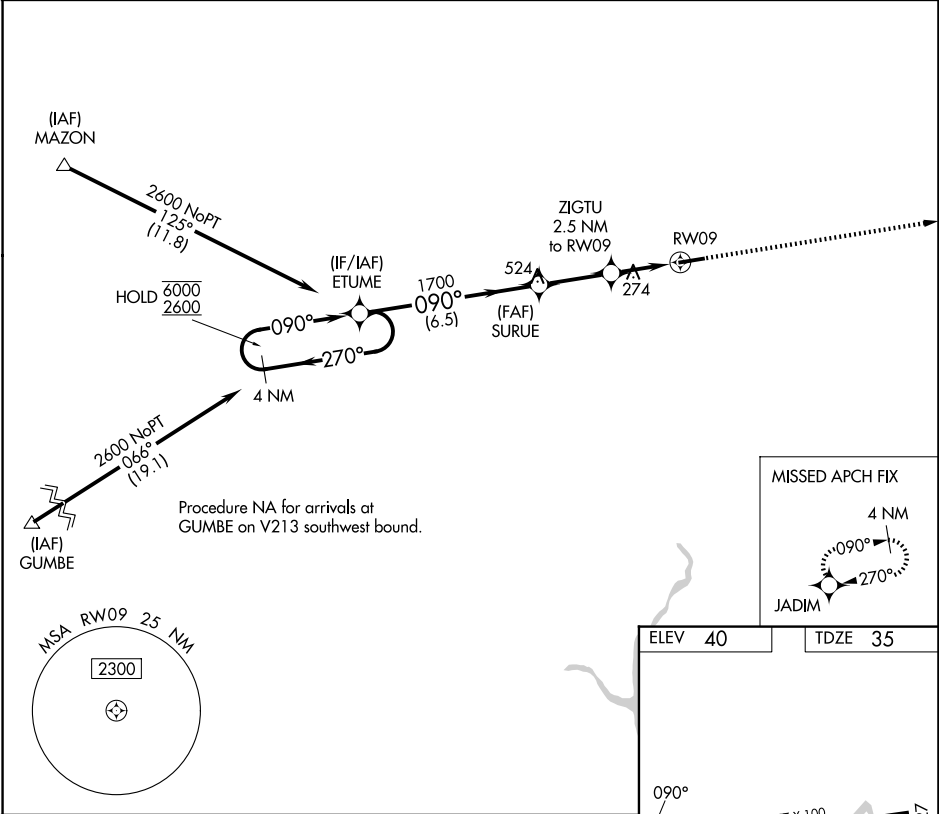
FRANKLIN RGNL (F'KN)

RNP APCH - GPS.

**Procedure NA at night. Rwy 9 helicopter visibility reduction below 1 SM NA.**

**MISSED APPROACH:**  
Climb to 2600 direct JADIM and hold.

AWOS-3PT <b>124.675</b>	NORFOLK APP CON <b>127.9 269.425</b>	UNICOM <b>122.8 (CTAF) 1</b>
----------------------------	---	---------------------------------



CATEGORY	A	B	C	D
LNAV MDA	580-1	545 (600-1)	580-1 <sup>5</sup> / <sub>8</sub>	545 (600-1 <sup>5</sup> / <sub>8</sub> )

NE-3, 14 MAY 2026 to 11 JUN 2026

NE-3, 14 MAY 2026 to 11 JUN 2026