

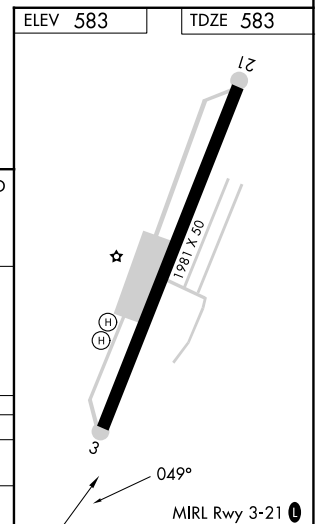
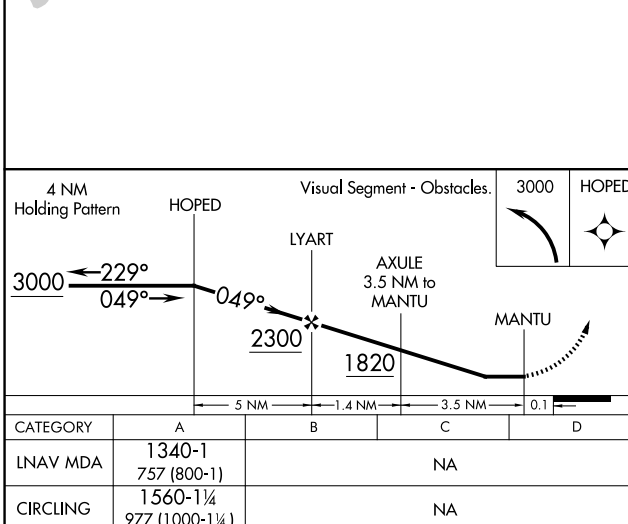
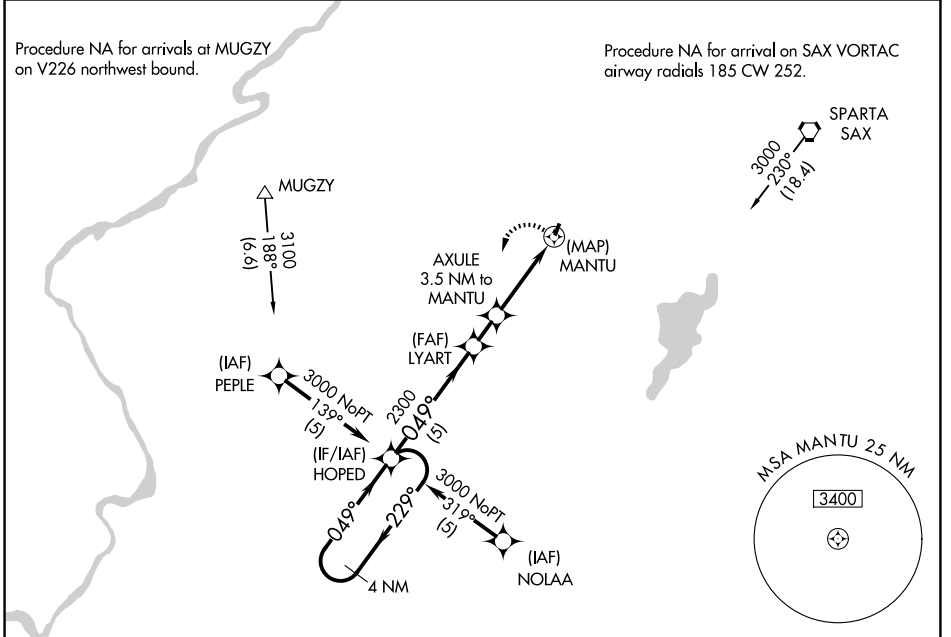
APP CRS	Rwy Ldg	<b>1981</b>
<b>049°</b>	TDZE	<b>583</b>
	Apt Elev	<b>583</b>

# RNAV (GPS) RWY 3

AEROFLEX/ANDOVER (12N)

RNP APCH.	MISSED APPROACH:
<p>▼ When local altimeter setting not received, use Caldwell altimeter setting and increase all MDA 120 feet. Procedure NA at night. Rwy 3 helicopter visibility reduction below 1 SM NA.</p>	<p>Climbing left turn to 3000 direct HOPED and hold.</p>

NEWARK APP CON <b>123.775 379.9</b>	UNICOM <b>122.8 (CTAF) 0</b>
--	---------------------------------



NE-2, 14 MAY 2026 to 11 JUN 2026

NE-2, 14 MAY 2026 to 11 JUN 2026