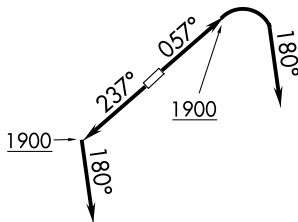


# CAVVS FIVE DEPARTURE (RNAV)

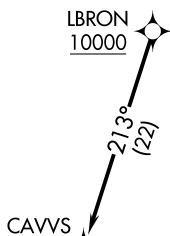
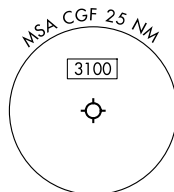
CLEVELAND DEP CON  
125.35 346.325  
D-ATIS  
119.95  
CLNC DEL  
121.85 (when twr closed)  
GND CON  
121.85  
COUNTY TOWER ★  
118.5 (CTAF)

**TOP ALTITUDE:  
ASSIGNED BY ATC**



RNAV 1 - DME/DME/IRU or GPS.

RADAR required.



**TAKEOFF MINIMUMS:**

Rwys 6, 24: Standard with minimum climb of 500' per NM to 1400.



### DEPARTURE ROUTE DESCRIPTION

**TAKEOFF RUNWAY 6:** Climb on heading 057° to 1900, then right turn heading 180° or as assigned by ATC for RADAR vectors to cross LBRON at or above 10000, thence....

**TAKEOFF RUNWAY 24:** Climb on heading 237° to 1900, then on heading 180° or as assigned by ATC for RADAR vectors to cross LBRON at or above 10000, thence....

....on track 213° to CAVVS, then on (transition).

Maintain ATC assigned altitude, expect filed altitude ten minutes after departure.

APPLETON TRANSITION (CAVVS5.APE)

NOTE: Chart not to scale.

# CAVVS FIVE DEPARTURE (RNAV)