

GTLKE FIVE DEPARTURE (RNAV)

EC-2, 14 MAY 2026 to 11 JUN 2026

**TOP ALTITUDE:
ASSIGNED BY ATC**

RNAV 1 - DME/DME/IRU or GPS.
RADAR required.

TAKEOFF MINIMUMS:
Rwys 6, 24: Standard with minimum climb
of 500' per NM to 1400.

CLEVELAND DEP CON
125.35 346.325
D-ATIS
119.95
CLNC DEL
121.85 (when nvr closed)
GND CON
121.85
COUNTY TOWER ★
118.5 (CTAF)

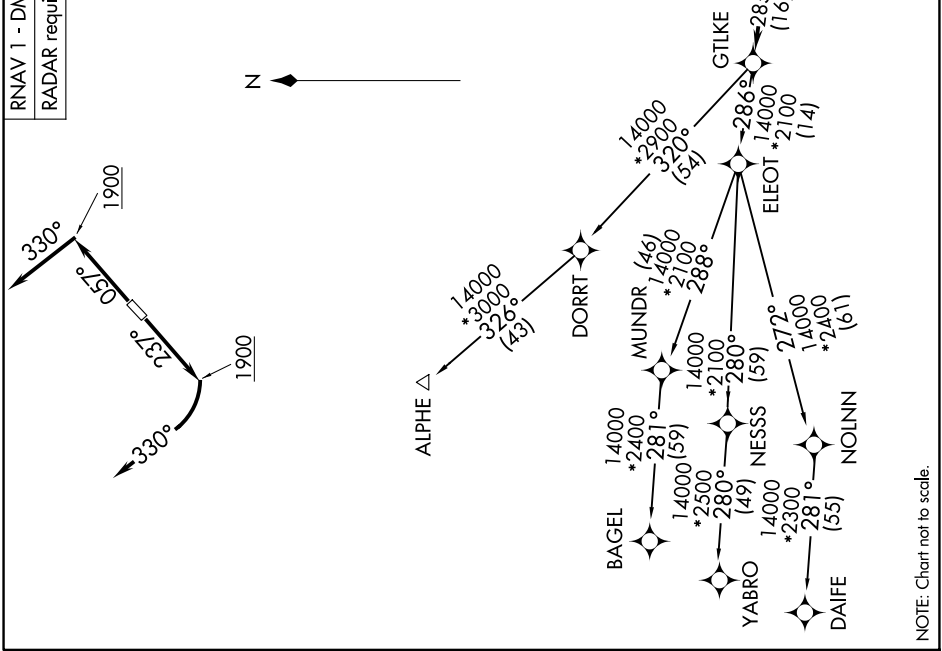
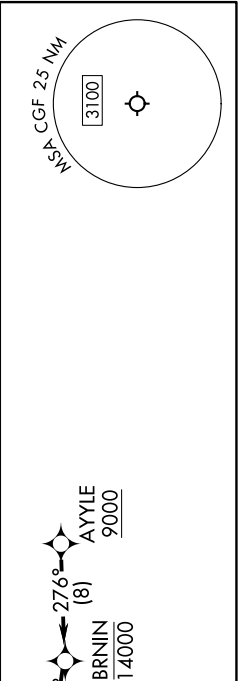
DEPARTURE ROUTE DESCRIPTION

TAKEOFF RUNWAY 6: Climb on heading 057° to 1900, then on heading 330° or as assigned by ATC for RADAR vectors to cross AYYLE at or above 9000, thence....

TAKEOFF RUNWAY 24: Climb on heading 237° to 1900, then right turn heading 330° or as assigned by ATC for RADAR vectors to cross AYYLE at or above 9000, thence....

...on track 276° to cross BRNJN at or below 14000, then on track 285° to GTLKE then on (transition). Maintain ATC assigned altitude, expect filed altitude 10 minutes after departure.

ALPHE TRANSITION (GTLKE5.ALPHE)
BAGEL TRANSITION (GTLKE5.BAGEL)
DAIFE TRANSITION (GTLKE5.DAIFE)
YABRO TRANSITION (GTLKE5.YABRO)



NOTE: Chart not to scale.

EC-2, 14 MAY 2026 to 11 JUN 2026