

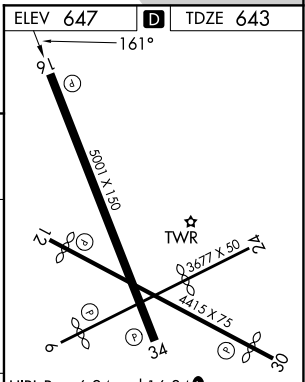
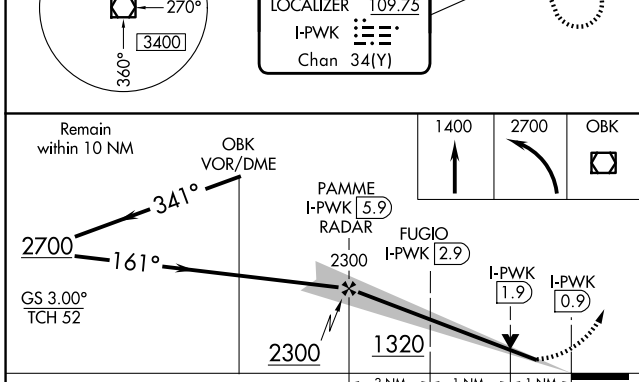
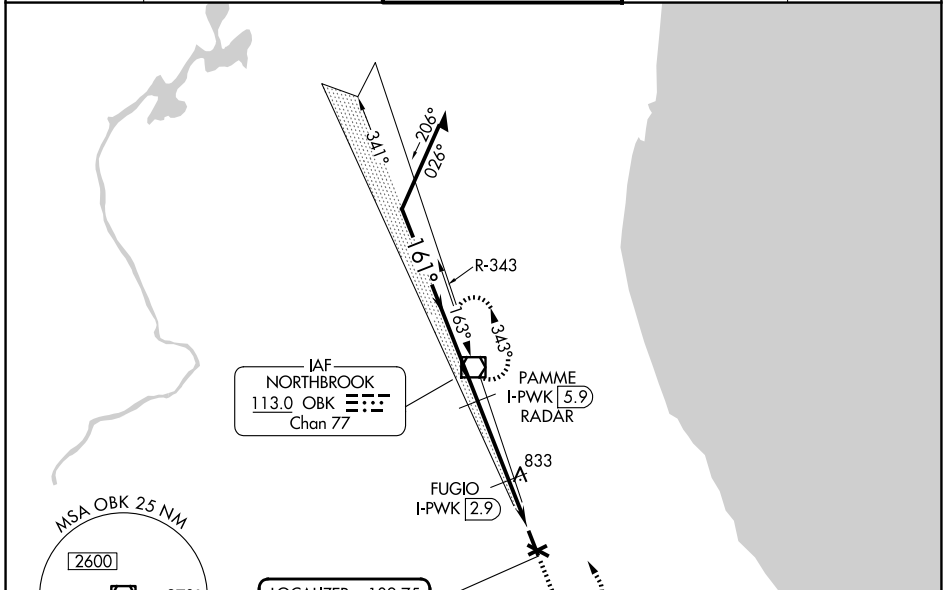
LOC/DME I-PWK 109.75 Chan 34 (Y)	APP CRS 161°	Rwy Ldg TDZE Apt Elev 5001 643 647
--	------------------------	--

ILS or LOC RWY 16

CHICAGO EXEC (PWK)

DME required.		MISSED APPROACH: Climb to 1400 then climbing left turn to 2700 direct OBK VOR/DME and hold, continue climb-in-hold to 2700.		
<p>⚠ Circling Rwy 6, 12, 24, 30 NA at night. Rwy 16 helicopter visibility reduction below ¾ SM NA.</p>				

ATIS 124.2	CHICAGO APP CON 120.55 306.925	EXECUTIVE TOWER ★ 119.9 (CTAF) 0	GND CON 121.7	UNICOM 122.95
----------------------	--	---	-------------------------	-------------------------



REMAIN WITHIN 10 NM	OBK VOR/DME	1400	2700	OBK
2700	341°	↑	↶	☐
GS 3.00°	TCH 52	PAMME I-PWK (5.9) RADAR	FUGIO I-PWK (2.9)	I-PWK (1.9)
2300	1320	2300	1320	I-PWK (0.9)
		← 3 NM	← 1 NM	← 1 NM

HIRL Rwy 6-24 and 16-34 0	MIRL Rwy 12-30 0
REIL Rwys 12 and 30	REIL Rwys 16 and 34 0
RLS Rwy 16 0	FAF to MAP 5 NM
Knots	60 90 120 150 180
Min:Sec	5:00 3:20 2:30 2:00 1:40

EC-3, 14 MAY 2026 to 11 JUN 2026

EC-3, 14 MAY 2026 to 11 JUN 2026