

(MONKZ5.MONKZ) 21112

# MONKZ FIVE DEPARTURE (RNAV)

AL-5028 (FAA)

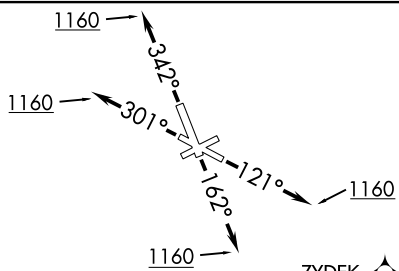
CHICAGO EXEC (PWK)

CHICAGO/PROSPECT HEIGHTS/WHEELING, ILLINOIS

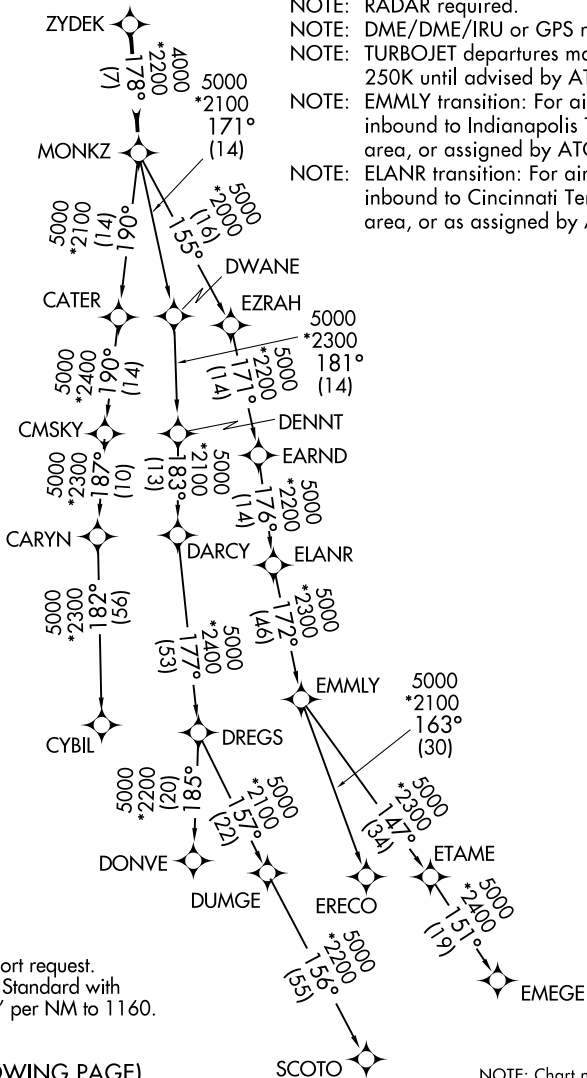
**TOP ALTITUDE:**  
**3000**

ATIS  
124.2  
GND CON  
121.7

EXECUTIVE TOWER \*  
119.9 (CTAF)  
CHICAGO DEP CON  
120.55 306.925



- NOTE: RNAV 1.
- NOTE: RADAR required.
- NOTE: DME/DME/IRU or GPS required.
- NOTE: TURBOJET departures maintain 250K until advised by ATC.
- NOTE: EMMLY transition: For aircraft inbound to Indianapolis Terminal area, or assigned by ATC.
- NOTE: ELANR transition: For aircraft inbound to Cincinnati Terminal area, or as assigned by ATC.



### TAKEOFF MINIMUMS

Rwys 6, 24: NA - Airport request.  
Rwys 12, 16, 30, 34: Standard with minimum climb of 500' per NM to 1160.

(NARRATIVE ON FOLLOWING PAGE)

NOTE: Chart not to scale.

# MONKZ FIVE DEPARTURE (RNAV)

(MONKZ5.MONKZ) 01FEB18

CHICAGO/PROSPECT HEIGHTS/WHEELING, ILLINOIS  
CHICAGO EXEC (PWK)

EC-3, 14 MAY 2026 to 11 JUN 2026

EC-3, 14 MAY 2026 to 11 JUN 2026



DEPARTURE ROUTE DESCRIPTION

TAKEOFF RWY 12: Climb heading 121° or as assigned by ATC to at or above 1160, expect vectors to ZYDEK, thence . . . .

TAKEOFF RWY 16: Climb heading 162° or as assigned by ATC to at or above 1160, expect vectors to ZYDEK, thence . . . .

TAKEOFF RWY 30: Climb heading 301° or as assigned by ATC to at or above 1160, expect vectors to ZYDEK, thence . . . .

TAKEOFF RWY 34: Climb heading 342° or as assigned by ATC to at or above 1160, expect vectors to ZYDEK, thence . . . .

. . . .on track 178° to MONKZ, then on (transition), maintain 3000, expect filed altitude ten minutes after departure.

- CYBIL TRANSITION (MONKZ5.CYBIL)
- DONVE TRANSITION (MONKZ5.DONVE)
- ELANR TRANSITION (MONKZ5.ELANR)
- EMEGE TRANSITION (MONKZ5.EMEGE)
- EMMLY TRANSITION (MONKZ5.EMMLY)
- ERECO TRANSITION (MONKZ5.ERECO)
- SCOTO TRANSITION (MONKZ5.SCOTO)

EC-3, 14 MAY 2026 to 11 JUN 2026

EC-3, 14 MAY 2026 to 11 JUN 2026