

WAAS CH 45627 W16A	APP CRS 161°	Rwy Ldg TDZE Apt Elev	5001 643 647
--	------------------------	-----------------------------	---

RNAV (GPS) RWY 16

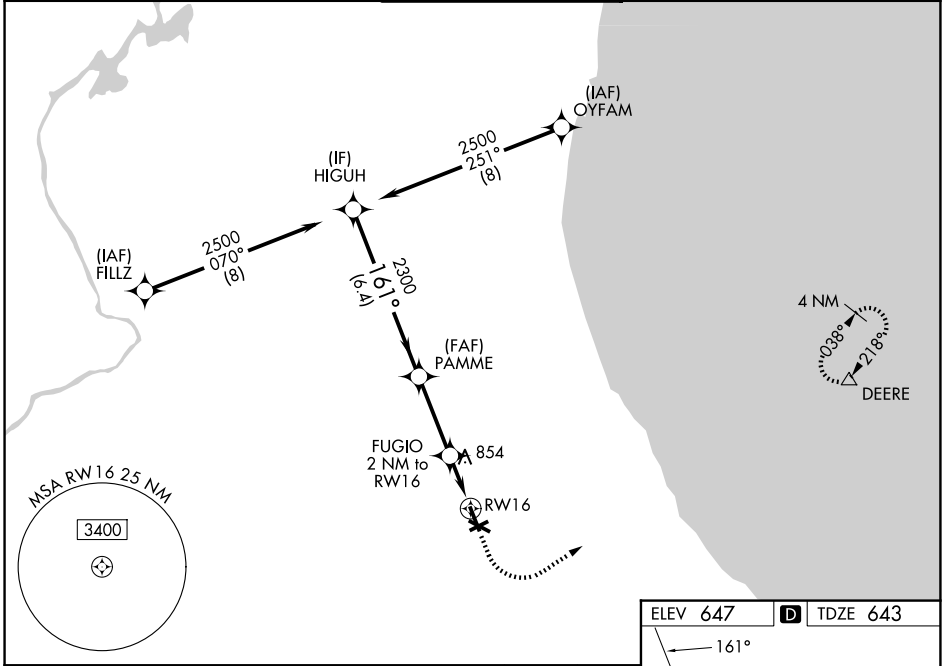
CHICAGO EXEC (PWK)

RNP APCH - GPS.

⚠ Rwy 16 helicopter visibility reduction below 3/4 SM NA.
⚠ For uncompensated Baro-VNAV systems, LNAV/VNAV NA below -19°C or above 54°C. Circling Rwy 6, 12, 24, 30 NA at night.

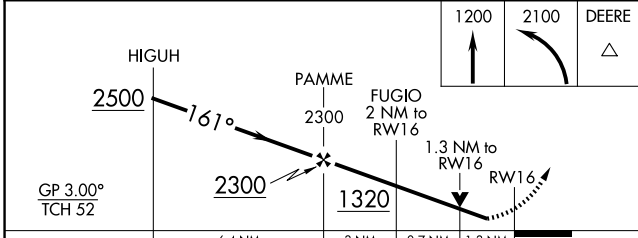
MISSED APPROACH: Climb to 1200 then climbing left turn to 2100 direct DEERE and hold.

ATIS 124.2	CHICAGO APP CON 120.55 306.925	EXECUTIVE TOWER ★ 119.9 (CTAF) 0	GND CON 121.7	UNICOM 122.95
----------------------	--	--	-------------------------	-------------------------



EC-3, 14 MAY 2026 to 11 JUN 2026

EC-3, 14 MAY 2026 to 11 JUN 2026



ELEV 647	D TDZE 643
----------	-------------------

HIRL Rwy 6-24 and 16-34 **Ⓛ**
 MRL Rwy 12-30 **Ⓛ**
 REIL Rws 12 and 30
 REIL Rws 16 and 34 **Ⓛ**
 RLLS Rwy 16 **Ⓛ**

CATEGORY	A	B	C	D
LPV DA	927-7/8		284 (300-7/8)	
LNAV/VNAV DA	1083-1 1/4		440 (500-1 1/4)	
LNAV MDA	1120-1	477 (500-1)	1120-1 3/8	477 (500-1 3/8)
CIRCLING	1140-1 493 (500-1)	1160-1 513 (600-1)	1200-1 1/2 553 (600-1 1/2)	1460-2 3/4 813 (900-2 3/4)