

FORT HOOD, TEXAS

COPTER RNAV (GPS) RWY 34

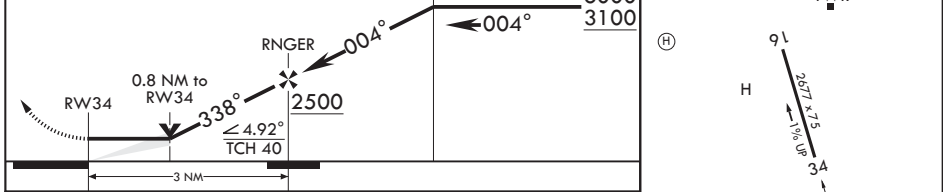
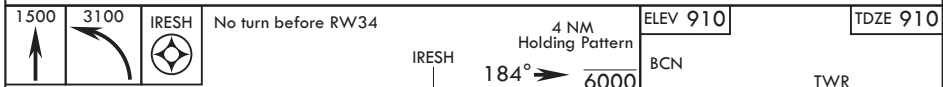
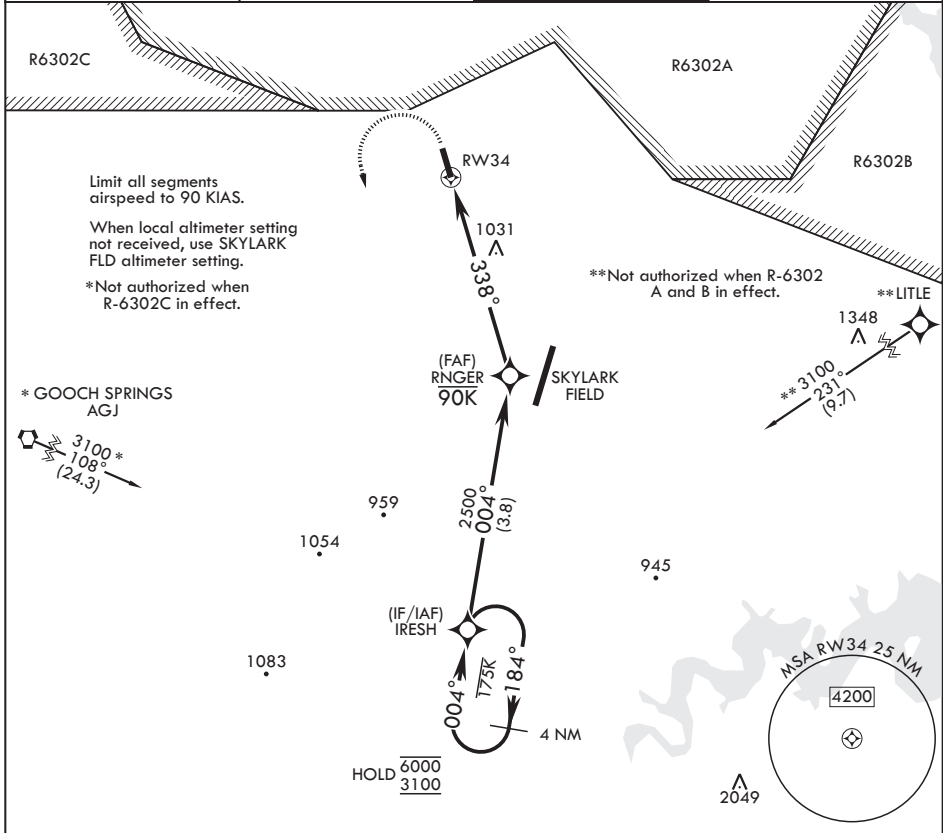
(USA) YOAKUM DEFRENN AHP (FORT HOOD) (KHLR)

APCH CRS 338°	Rwy Idg 2677
	TDZE 910
	Arprt Elev 910

RNP APCH – GPS	MISSED APPROACH: Climb to 1500 then climbing left turn to 3100 direct IRESH and hold.
----------------	---

RADAR required for missed approach.	
⚠️ NA	

ATIS* 138.6	GRAY APP CON/DEP CON 120.075 323.15	TOWER* 119.65 ☺ 269.45	GND CON 133.85 225.4
----------------	--	---------------------------	-------------------------



CATEGORY	COPTER		MIRL all rwys ☺
LNAV MDA	1320-1	410 (500-1)	

FORT HOOD, TEXAS 31°08'N - 97°43'W YOAKUM DEFRENN AHP (FORT HOOD) (KHLR)

Amdt 1 30OCT25

COPTER RNAV (GPS) RWY 34

SC-3, 14 MAY 2026 to 11 JUN 2026

SC-3, 14 MAY 2026 to 11 JUN 2026