

LOC/DME I-CRP 110.3 Chan 40	APP CRS 132°	Rwy Ldg TDZE 46 Apt Elev 46
---	------------------------	---

ILS or LOC RWY 13

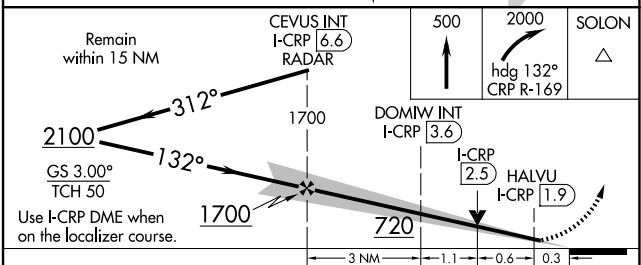
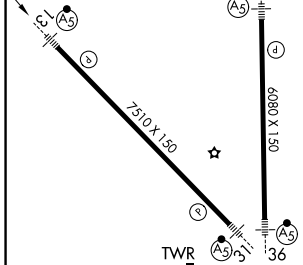
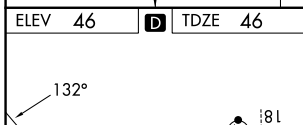
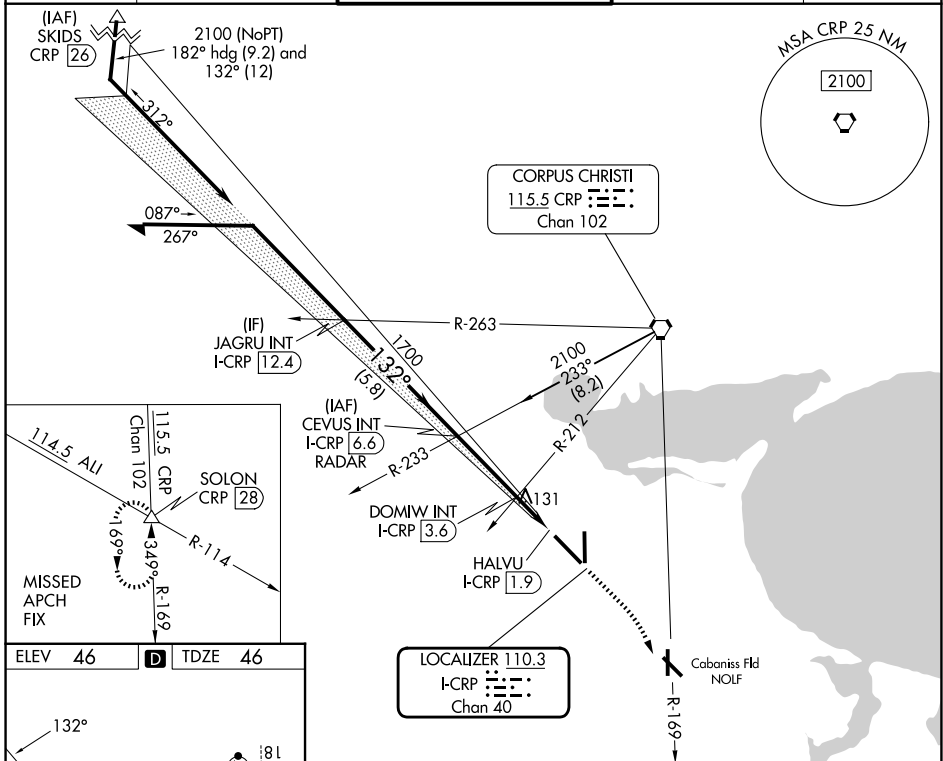
CORPUS CHRISTI INTL (CRP)

⚠ Autopilot coupled approach NA below 260.
 For inop ALS, increase S-ILS 13 Cat E visibility to RVR 4000 and S-LOC 13 Cats C, D, and E visibility to RVR 5500.
 *RVR 1800 authorized with use of FD or AP or HUD to DA.

MALSR

MISSED APPROACH: Climb to 500 then climbing right turn to 2000 on heading 132° and CRP VORTAC R-169 to SOLON INT/CRP VORTAC 28 DME and hold.

ATIS 126.8	CORPUS APP CON 120.9 348.725	CORPUS TOWER 119.4 257.8	GND CON 121.9 269.15	CLNC DEL 118.55
----------------------	--	------------------------------------	--------------------------------	---------------------------



CATEGORY	A	B	C	D	E
S-ILS 13*	246/24 200 (200-½)				
S-LOC 13	400/24	354 (400-½)	400/30 354 (400-¾)		
CIRCLING	500-1 454 (500-1)	780-1 734 (800-1)	820-2¼ 774 (800-2¼)	820-2½ 774 (800-2½)	820-2¾ 774 (800-2¾)

CORPUS CHRISTI, TEXAS
 Amdt 28B 02NOV23

27°46'N-97°30'W

CORPUS CHRISTI INTL (CRP)

ILS or LOC RWY 13

SC-3, 14 MAY 2026 to 11 JUN 2026

SC-3, 14 MAY 2026 to 11 JUN 2026