

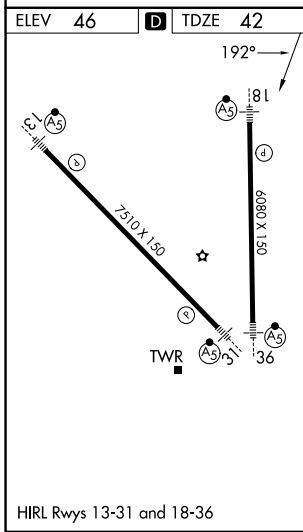
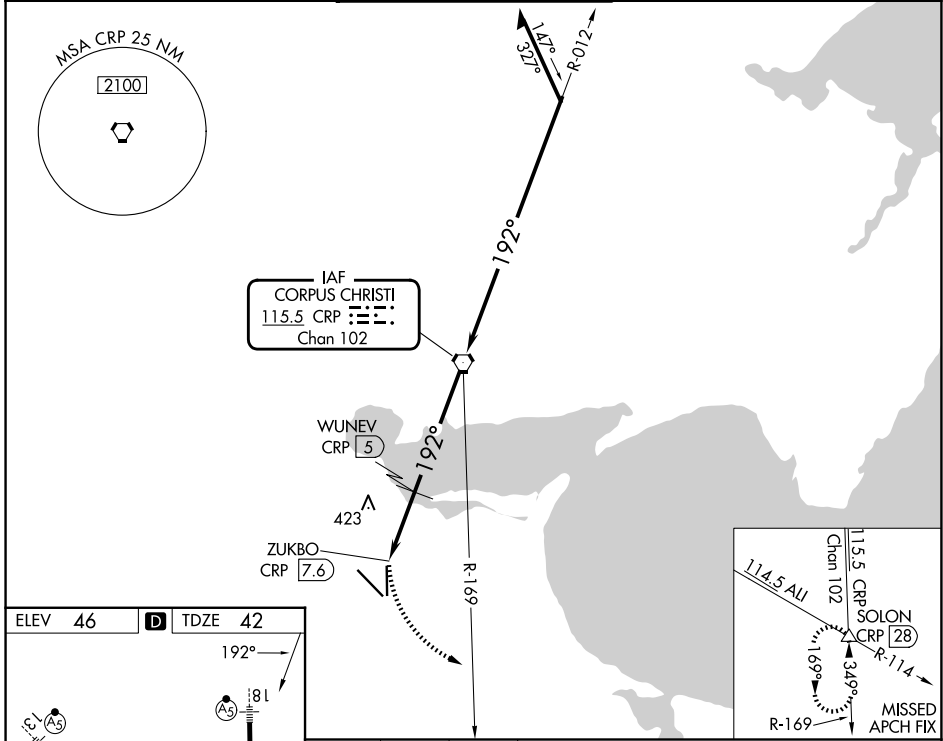
VORTAC CRP 115.5	APP CRS 192°	Rwy Ldg 6080
Chan 102		TDZE 42
		Apt Elev 46

VOR or TACAN RWY 18

CORPUS CHRISTI INTL (CRP)

DME required.		MALSRL	MISSED APPROACH: Climbing left turn to 2000 on heading 150° and CRP VORTAC R-169 to SOLON INT/CRP 28 DME and hold.
Rwy 18 helicopter visibility reduction below 3/4 SM NA. Inop table does not apply.			

ATIS 126.8	CORPUS APP CON 120.9 348.725	CORPUS TOWER 119.4 257.8	GND CON 121.9 269.15	CLNC DEL 118.55
----------------------	--	------------------------------------	--------------------------------	---------------------------



2000	CRP R-169	SOLON	CRP VORTAC	WUNEV CRP 5	ZUKBO CRP 7.6	CRP 1000	CRP 1700	CRP 2100	
hdg 150°		Remain within 15 NM							
3.00° TCH 50									
0.2 1.6 NM		1 NM		5 NM					
CATEGORY	A	B	C	D	E				
S-18	680-1	638 (700-1)	680-1 3/4	638 (700-1 3/4)					
CIRCLING	680-1 634 (700-1)	780-1 734 (800-1)	820-2 1/4 774 (800-2 1/4)	820-2 1/2 774 (800-2 1/2)	820-2 3/4 774 (800-2 3/4)				

SC-3, 14 MAY 2026 to 11 JUN 2026

SC-3, 14 MAY 2026 to 11 JUN 2026