

WAAS CH <b>77539</b> <b>W01A</b>	APP CRS <b>004°</b>	Rwy Ldg TDZE <b>620</b> Apt Elev <b>620</b>	<b>4003</b>
--	------------------------	---	-------------

# RNAV (GPS) RWY 1

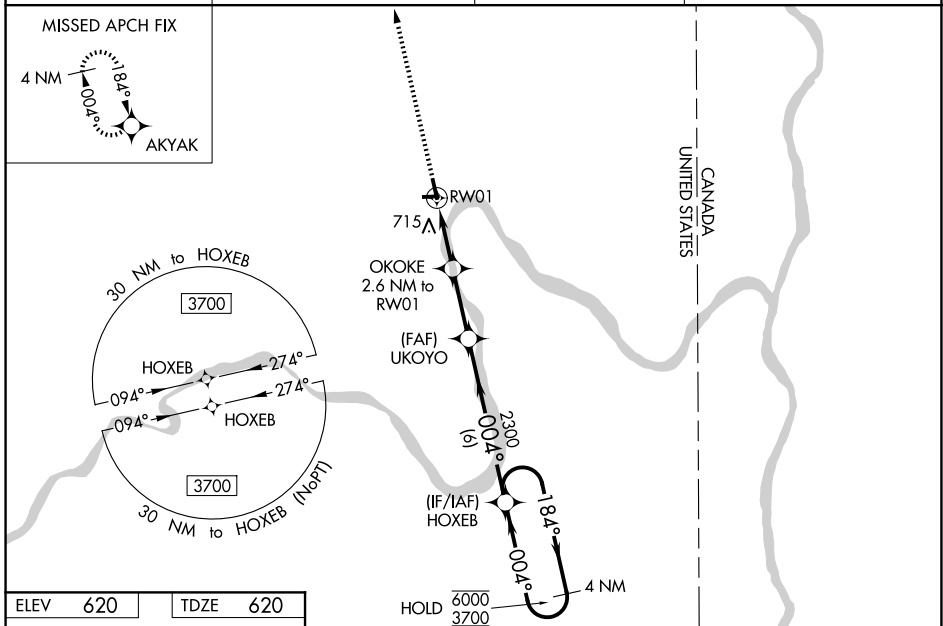
CARIBOU MUNI (CAR)

RNP APCH.

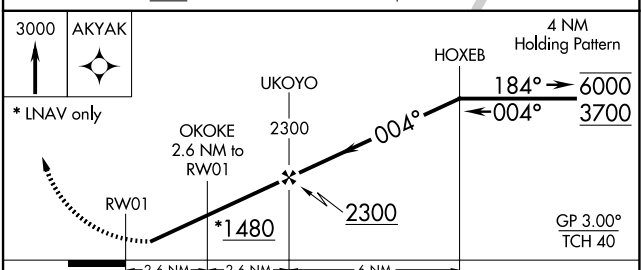
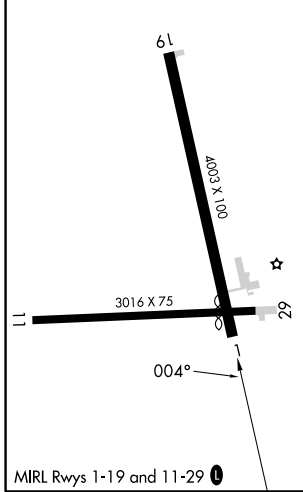
**⚠** Rwy 1 helicopter visibility reduction below 1 SM NA. Baro-VNAV NA when using Presque Isle altimeter setting. For uncompensated Baro-VNAV systems, LNAV/VNAV NA below -21°C or above 54°C. Straight-in Rwy 1 NA at night. Circling Rwy 1, 11, 29 NA at night. When local altimeter setting not received, use Presque Isle altimeter setting and increase all DAs 49 feet and all MDAs 60 feet. Increase LNAV MDA Cat C & D visibility  $\frac{1}{8}$  SM, Circling Cat D visibility  $\frac{1}{4}$  SM.

**MISSED APPROACH:**  
Climb to 3000 direct AKYAK and hold.

ASOS <b>135.125</b>	BOSTON CENTER <b>124.75 239.05</b>	CLNC DEL <b>124.75</b>	UNICOM <b>122.8 (CTAF) 0</b>
------------------------	---------------------------------------	---------------------------	---------------------------------



ELEV 620	TDZE 620
----------	----------



CATEGORY	A	B	C	D
LPV DA		870-1	250 (300-1)	
LNAV/VNAV DA		872-1	252 (300-1)	
LNAV MDA		980-1	360 (400-1)	
CIRCLING	1140-1	520 (600-1)	1140-1½ 520 (600-1½)	1400-2½ 780 (800-2½)

NE-1, 14 MAY 2026 to 11 JUN 2026

NE-1, 14 MAY 2026 to 11 JUN 2026