


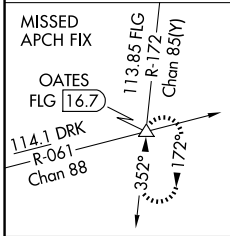
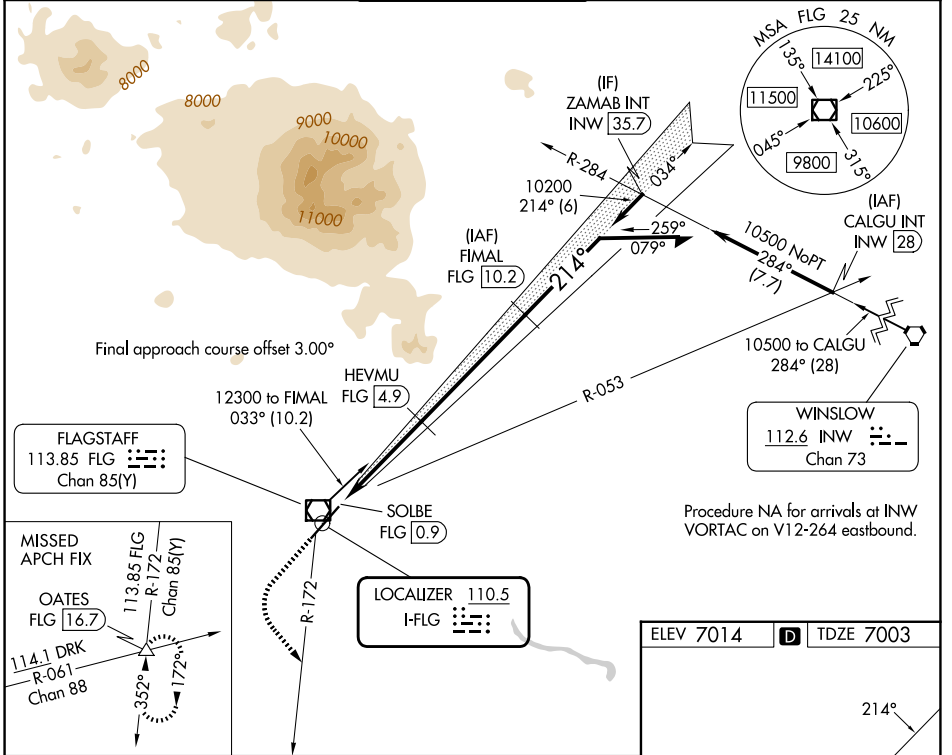
LOC I-FLG 110.5	APP CRS 214°	Rwy Ldg TDZE 7000 7003 Apt Elev 7014
---------------------------	------------------------	---

ILS or LOC RWY 21

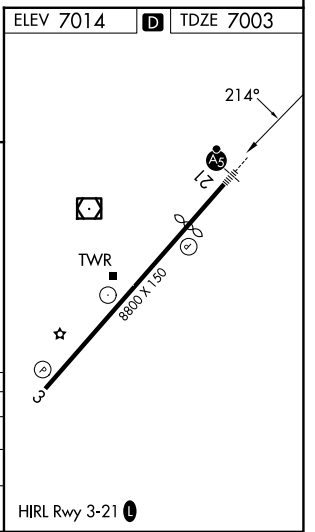
FLAGSTAFF PULLIAM (FLG)

<p>⚠ Autopilot coupled approach NA below 7640 feet. DME required. DME from FLG VOR/DME. Simultaneous reception of I-FLG and FLG DME required. For inop ALS increase S-ILS 21 all Cats visibility to ½.</p>	<p>MALSR</p> 	<p>MISSED APPROACH: Climb to 7500, then climbing left turn to 11000 on heading 130° and FLG R-172 to OATES INT/FLG VOR/DME 16.7 DME and hold, continue climb-in-hold to 11000.</p>
---	--	--

ATIS 125.8	PHOENIX APP CON 126.375 236.775	FLAGSTAFF TOWER ★ 134.55 (CTAF) 0 239.25	GND CON 121.9	UNICOM 122.95
----------------------	---	--	-------------------------	-------------------------



7500	11000	FLG R-172	OATES	FIMAL FLG 10.2	Remain within 10 NM
↑	hdg 130°		△		
* LOC only		* FLG 1.3	HEVMU FLG 4.9	10200	034°
		SOLBE FLG 0.9		12300	214°
				8500*	10200
					GS 3.00° TCH 52
		0.4	0.5	3.7 NM	5.3 NM
CATEGORY	A	B	C	D	
S-ILS 21		7258-½	255 (300-½)		
S-LOC 21		7340-½	337 (400-½)		
CIRCLING	7520-1 506 (600-1)	7560-1 546 (600-1)	8100-3 1086 (1100-3)	8560-3 1546 (1600-3)	



SW-4, 14 MAY 2026 to 11 JUN 2026

SW-4, 14 MAY 2026 to 11 JUN 2026