

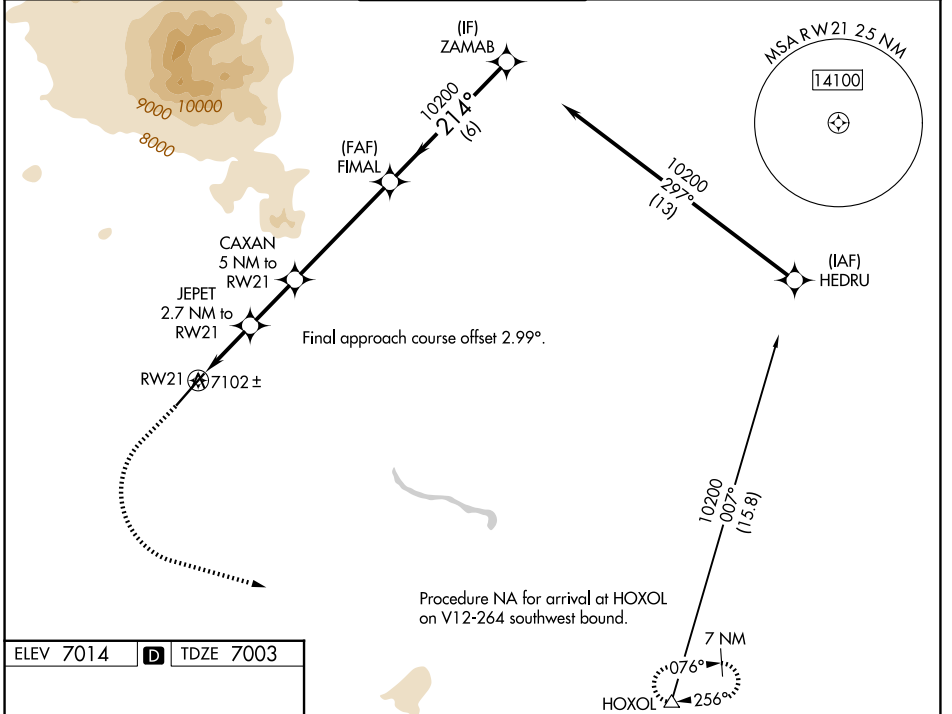
WAAS CH <b>99341</b> <b>W21A</b>	APP CRS <b>214°</b>	Rwy Ldg TDZE Apt Elev	<b>7000</b> <b>7003</b> <b>7014</b>
--	------------------------	-----------------------------	---

# RNAV (GPS) RWY 21

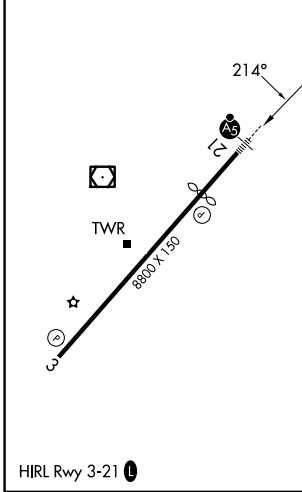
FLAGSTAFF PULLIAM (F'L.G)

<p><b>▼</b> For uncompensated Baro-VNAV systems, LNAV/VNAV NA below -19 °C (2°F) or above 44°C (111°F). DME/DME RNP-0.3 NA.  <b>▲</b> For inop ALS, increase LPV all Cats visibility to ¾ SM.</p>	<p>MALSR</p>	<p>MISSED APPROACH: Climb to 7500 then climbing left turn to 10800 direct HOXOL and hold.</p>
---	--------------	---

ATIS <b>125.8</b>	PHOENIX APP CON <b>126.375 236.775</b>	FLAGSTAFF TOWER ★ <b>134.55 (CTAF) 239.25</b>	GND CON <b>121.9</b>	UNICOM <b>122.95</b>
----------------------	---	--	-------------------------	-------------------------



ELEV 7014	<b>D</b>	TDZE 7003
-----------	----------	-----------



	7500	10800	HOXOL	JEPET 2.7 NM to RW21	CAXAN 5 NM to RW21	FIMAL 10200	ZAMAB
*LNAV only							
				*1 NM to RW21		214° 10200	10200
				7900*	8640*		GP 3.00° TCH 52
				1 NM	1.7 NM	2.3 NM	4.9 NM
							6 NM
CATEGORY			A	B	C	D	
LPV DA				7258-½	255 (300-½)		
LNAV/VNAV DA				7319-5/8	316 (400-¾)		
LNAV MDA			7360-½	357 (400-½)		7360-5/8	357 (400-¾)
CIRCLING	7520-1 506 (600-1)	7560-1 546 (600-1)		8100-3 1086 (1100-3)		8560-3 1546 (1600-3)	

SW-4, 14 MAY 2026 to 11 JUN 2026

SW-4, 14 MAY 2026 to 11 JUN 2026