

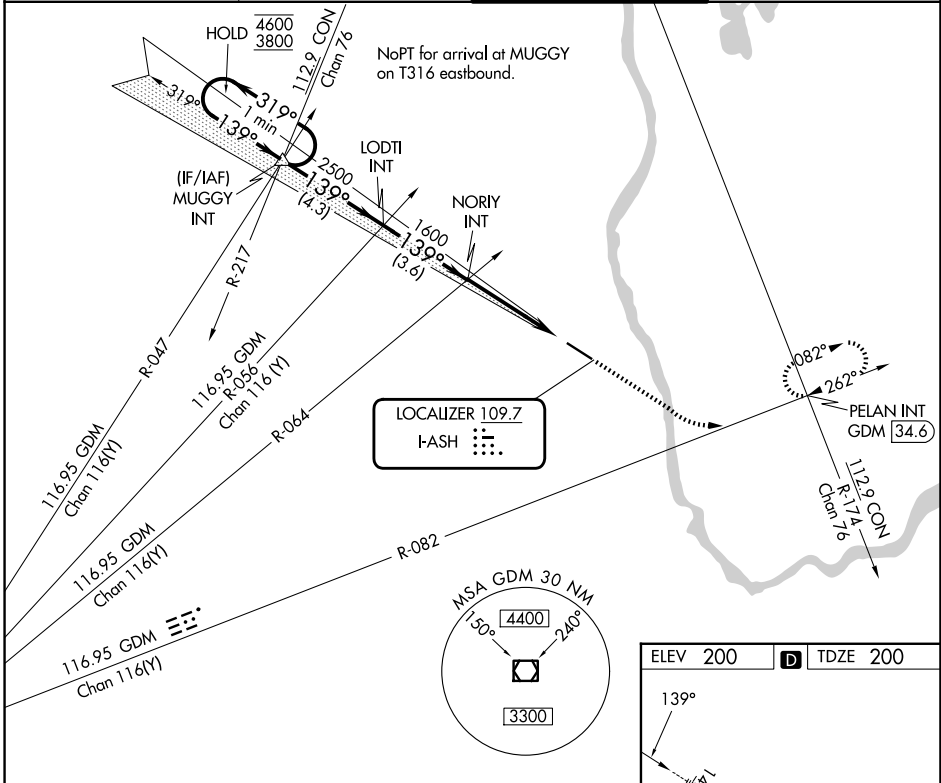
LOC I-ASH <b>109.7</b>	APP CRS <b>139°</b>	Rwy Ldg TDZE Apt Elev <b>5650</b> <b>200</b> <b>200</b>
---------------------------	------------------------	--

# ILS or LOC RWY 14

BOIRE FLD (ASH)

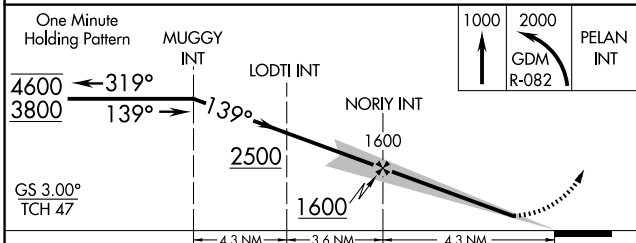
RADAR required for procedure entry.		MALS	MISSED APPROACH: Climb to 1000 then climbing left turn to 2000 on GDM VOR/DME R-082 to PELAN INT/GDM R-082/34.6 DME and hold.
For inop ALS, increase S-LOC Cat C/D visibility to 1 3/4 SM.			

ATIS <b>125.1</b>	BOSTON APP CON <b>124.9 269.075</b>	NASHUA TOWER <b>133.2 (CTAF) 0</b>	GND CON <b>121.8</b>
----------------------	--	---------------------------------------	-------------------------



NE-1, 14 MAY 2026 to 11 JUN 2026

NE-1, 14 MAY 2026 to 11 JUN 2026



ELEV 200	D	TDZE 200
HIRL Rwy 14-32 REIL Rwy 32		
FAF to MAP 4.3 NM		
Knots	60	90 120 150 180
Min:Sec	4:18	2:52 2:09 1:43 1:26

CATEGORY	A	B	C	D
S-ILS 14	400-1/2 200 (200-1/2)			
S-LOC 14	820-1/2	620 (700-1/2)	820-1 3/8	620 (700-1 3/8)
CIRCLING	840-1 640 (700-1)	860-1 660 (700-1)	920-2 720 (800-2)	980-2 1/2 780 (800-2 1/2)