

WAAS CH <b>73030</b> W32A	APP CRS <b>319°</b>	Rwy Ldg TDZE Apt Elev	<b>5650</b> <b>193</b> <b>200</b>
---------------------------------	------------------------	-----------------------------	---

# RNAV (GPS) RWY 32

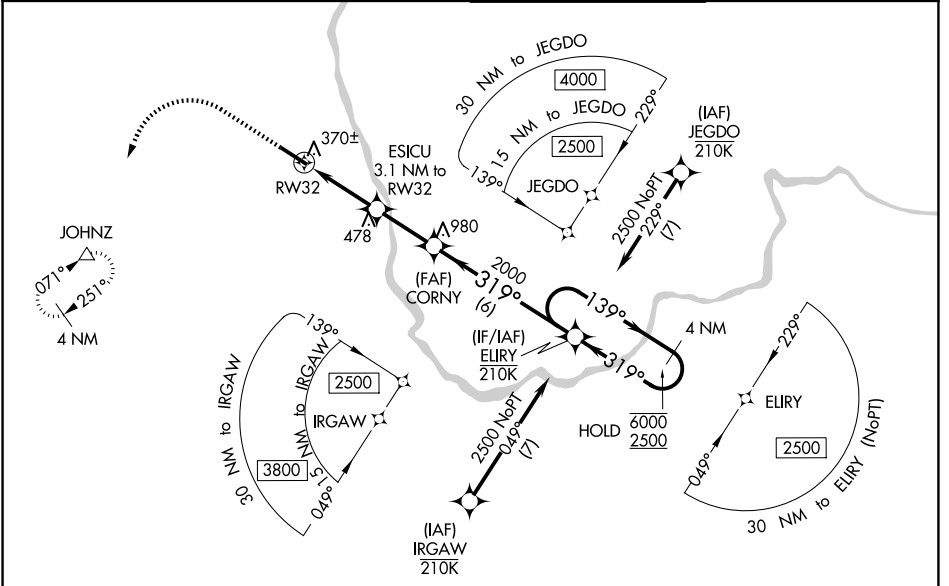
BOIRE FLD (ASH)

RNP APCH.

**▼** Rwy 32 helicopter visibility reduction below  $\frac{3}{4}$  SM NA.  
**▲** For uncompensated Baro-VNAV systems, LNAV/VNAV NA below -15°C or above 54°C.

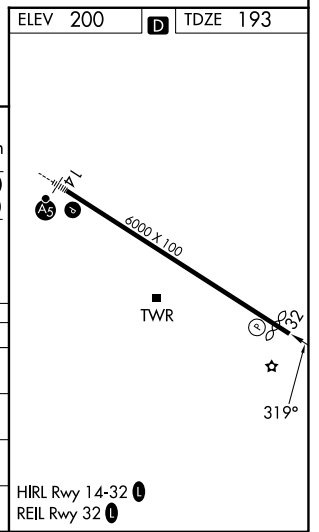
MISSED APPROACH:  
 Climb to 800 then climbing left turn to 4000 direct JOHNZ and hold, continue climb-in-hold to 4000.

ATIS <b>125.1</b>	BOSTON APP CON <b>124.9 269.075</b>	NASHUA TOWER <b>133.2 (CTAF)</b> <b>0</b>	GND CON <b>121.8</b>
----------------------	--	--	-------------------------



NE-1, 14 MAY 2026 to 11 JUN 2026

NE-1, 14 MAY 2026 to 11 JUN 2026



800	4000	JOHNZ	* LNAV only.	ELIRY	4 NM
↑	↙	△			Holding Pattern
RW32	*1.2 NM to RW32	ESICU	3.1 NM to RW32	CORNY	2000
			*1220		139° → 6000
					← 319° 2500
					GP 3.00° TCH 45
CATEGORY	A	B	C	D	
LPV DA		477- $\frac{7}{8}$	284 (300- $\frac{7}{8}$ )		
LNAV/VNAV DA		633-1 $\frac{1}{4}$	440 (500-1 $\frac{1}{4}$ )		
LNAV MDA	620-1	427 (500-1)	620-1 $\frac{1}{4}$	427 (500-1 $\frac{1}{4}$ )	
CIRCLING	820-1 620 (700-1)	840-1 640 (700-1)	900-2 700 (700-2)	1000-2 $\frac{1}{2}$ 800 (800-2 $\frac{1}{2}$ )	