

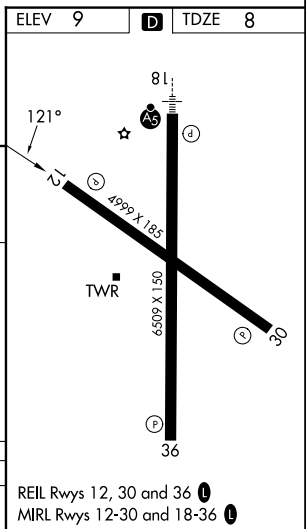
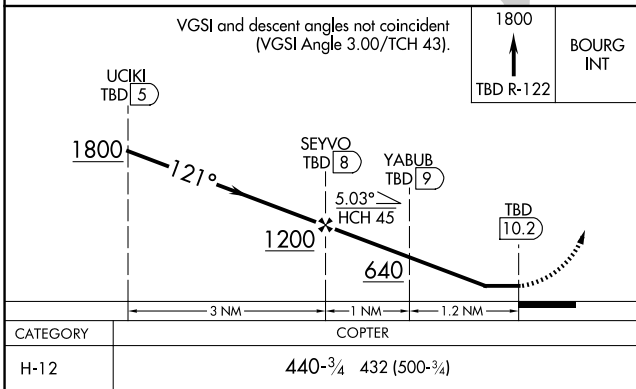
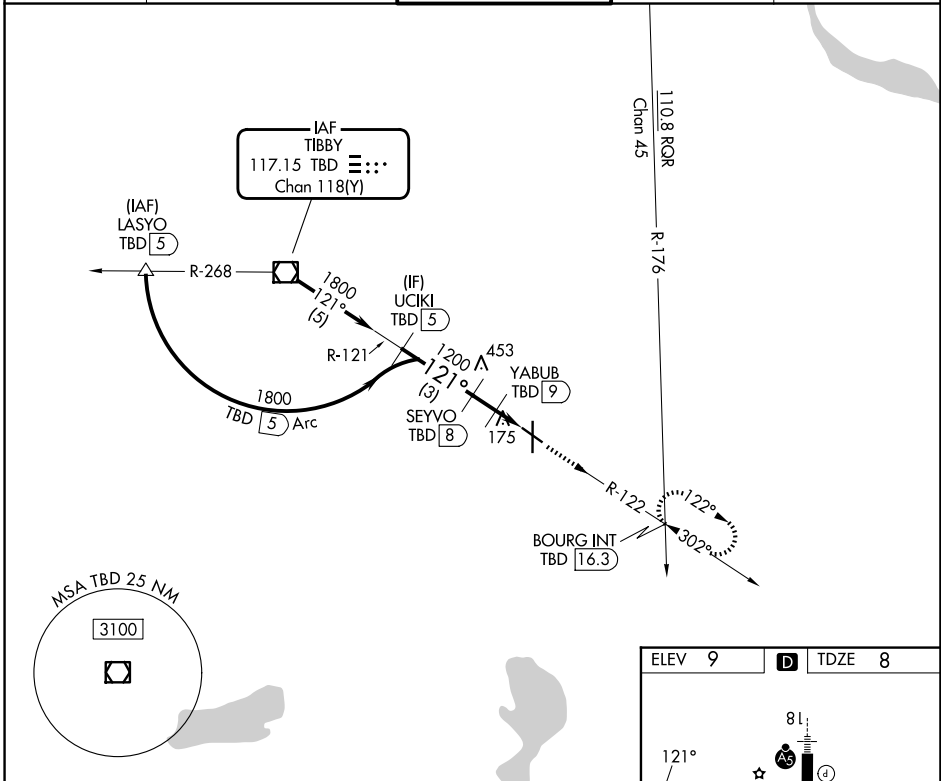
VOR/DME TBD 117.15 Chan 118(Y)	APP CRS 121°	Rwy Ldg 4843 TDZE 8 Apt Elev 9
--	------------------------	---

COPTER VOR RWY 12

HOUMA-TERREBONNE (HUM)

DME required. ▼ When local altimeter setting not received, use MSY ▲ altimeter setting and increase MDA 80 feet.	MISSED APPROACH: Climb to 1800 on TBD VOR/DME R-122 to BOURG INT/16.3 DME and hold, continue climb-in-hold to 1800.
--	---

ATIS 120.25	NEW ORLEANS APP CON 118.9 350.35	HOUMA TOWER ★ 125.3 (CTAF) 0 346.3	GND CON 123.875	UNICOM 122.95
-----------------------	--	--	---------------------------	-------------------------



SC-4, 14 MAY 2026 to 11 JUN 2026

SC-4, 14 MAY 2026 to 11 JUN 2026