

WAAS CH 56313 W12A	APP CRS 124°	Rwy Ldg 4843 TDZE 8 Apt Elev 9
--	------------------------	---

RNAV (GPS) RWY 12

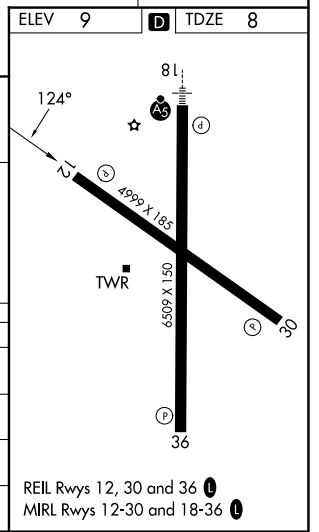
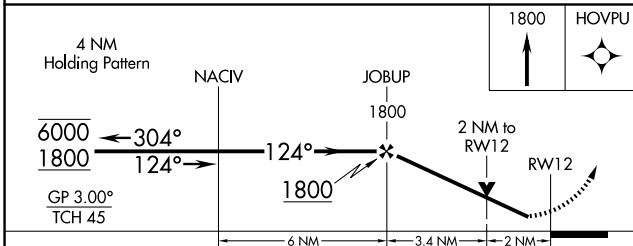
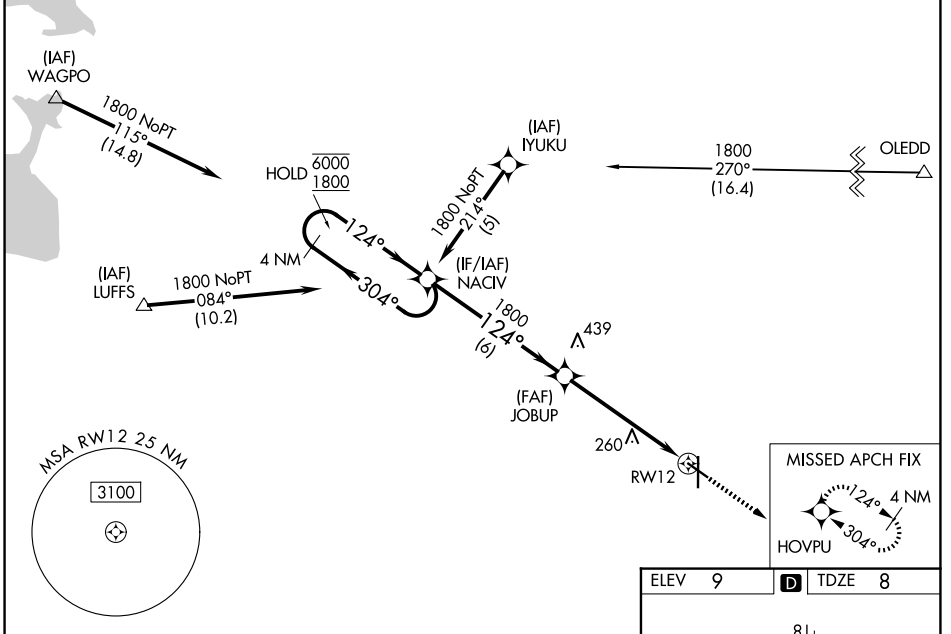
HOUMA-TERREBONNE (HUM)

RNP APCH - GPS.

▼ For uncompensated Baro-VNAV systems, LNAV/VNAV NA below -15°C or above 54°C.
 ▲ Rwy 12 helicopter visibility reduction below 3/4 SM NA. Baro-VNAV and VDP NA when using MSY altimeter setting. When local altimeter setting not received, use MSY altimeter setting and increase LPV DA to 370 feet and all visibilities 1/4 SM. Increase LNAV/VNAV DA to 567 feet and all visibilities 1/4 SM. Increase all MDAs 80 feet and LNAV visibility Cat B/C/D 1/4 SM, and Circling visibility Cat B/C/D 1/4 SM.

MISSED APPROACH:
Climb to 1800 direct HOVPU and hold.

ATIS 120.25	NEW ORLEANS APP CON 118.9 350.35	HOUMA TOWER * 125.3 (CTAF) 346.3	GND CON 123.875	UNICOM 122.95
-----------------------	--	--	---------------------------	-------------------------



CATEGORY	A	B	C	D
LPV DA		293-7/8	285 (300-7/8)	
LNAV/VNAV DA		490-1 3/8	482 (500-1 3/8)	
LNAV MDA	680-1	672 (700-1)	680-1 7/8	672 (700-1 7/8)
CIRCLING	680-1	671 (700-1)	760-2 1/4 751 (800-2 1/4)	760-2 1/2 751 (800-2 1/2)

SC-4, 14 MAY 2026 to 11 JUN 2026

SC-4, 14 MAY 2026 to 11 JUN 2026