


WAAS CH <b>99413</b> <b>W18A</b>	APP CRS <b>179°</b>	Rwy Ldg <b>6143</b> TDZE <b>8</b> Apt Elev <b>9</b>
--	------------------------	---

# RNAV (GPS) RWY 18

HOUMA-TERREBONNE (HUM)

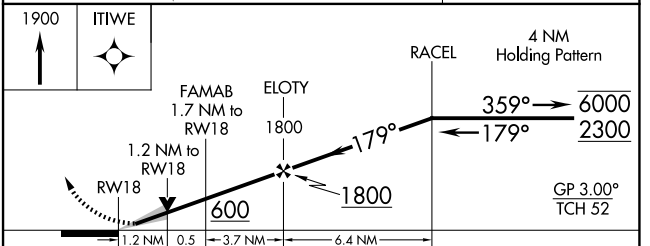
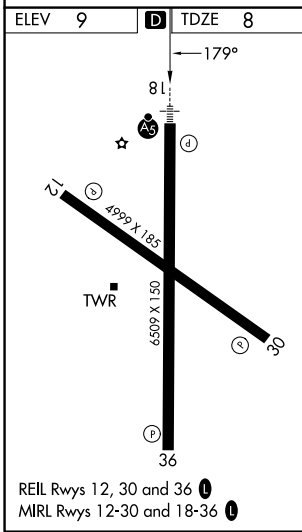
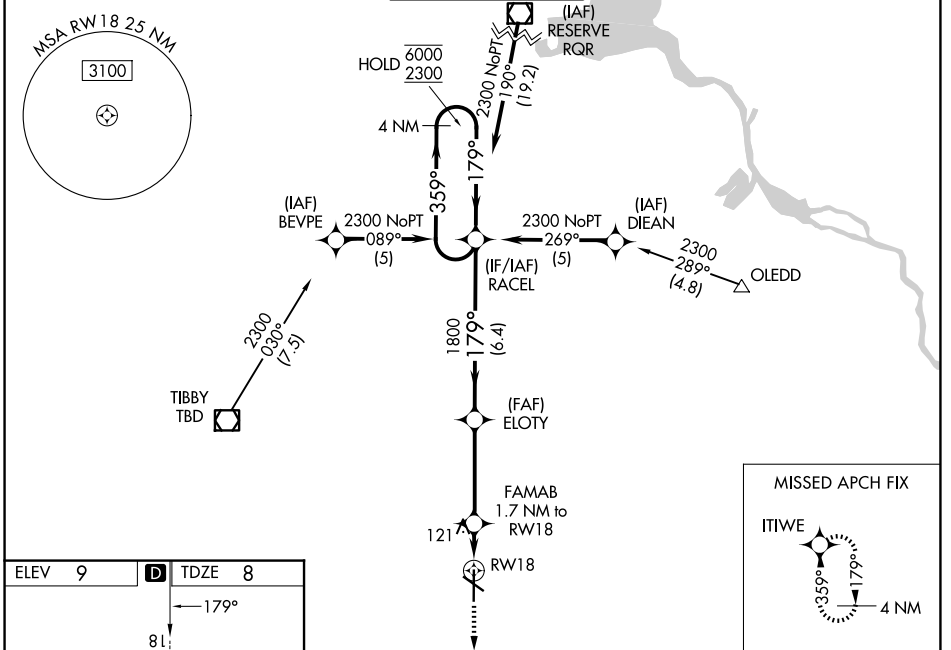
RNP APCH - GPS.

**⚠** For uncompensated Baro-VNAV systems, LNAV/VNAV NA below -15°C or above 54°C. Baro-VNAV and VDP NA when using MSY altimeter setting. When local altimeter setting not received, use MSY altimeter setting and increase LPV DA to 286 feet; increase LNAV/VNAV DA to 517 feet and all visibilities ¼ SM. Increase all MDAs 80 feet and LNAV visibility Cat C/D ¼ SM, and Circling visibility Cat C/D ¼ SM.

MALSR 

MISSED APPROACH: Climb to 1900 direct ITIWE and hold.

ATIS <b>120.25</b>	NEW ORLEANS APP CON <b>118.9 350.35</b>	HOUMA TOWER * <b>125.3 (CTAF) 0 346.3</b>	GND CON <b>123.875</b>	UNICOM <b>122.95</b>
-----------------------	--	--	---------------------------	-------------------------



CATEGORY	A	B	C	D
LPV DA		209-½	201 (200-½)	
LNAV/VNAV DA	440-½	432 (500-½)	440-¾	432 (500-¾)
LNAV MDA	440-½	432 (500-½)	440-¾	432 (500-¾)
CIRCLING	480-1	471 (500-1)	760-2¼ 751 (800-2¼)	760-2½ 751 (800-2½)