

WAAS CH 61013 W30A	APP CRS 304°	Rwy Ldg 4999 TDZE 9 Apt Elev 9
--	------------------------	---

RNAV (GPS) RWY 30

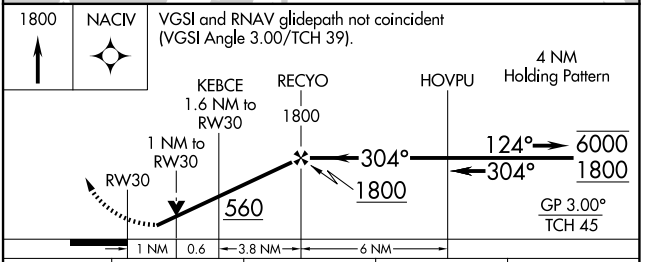
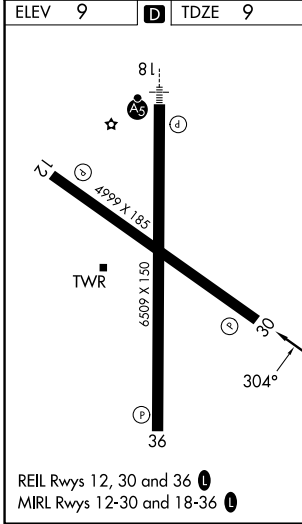
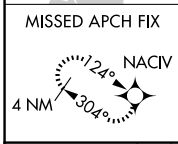
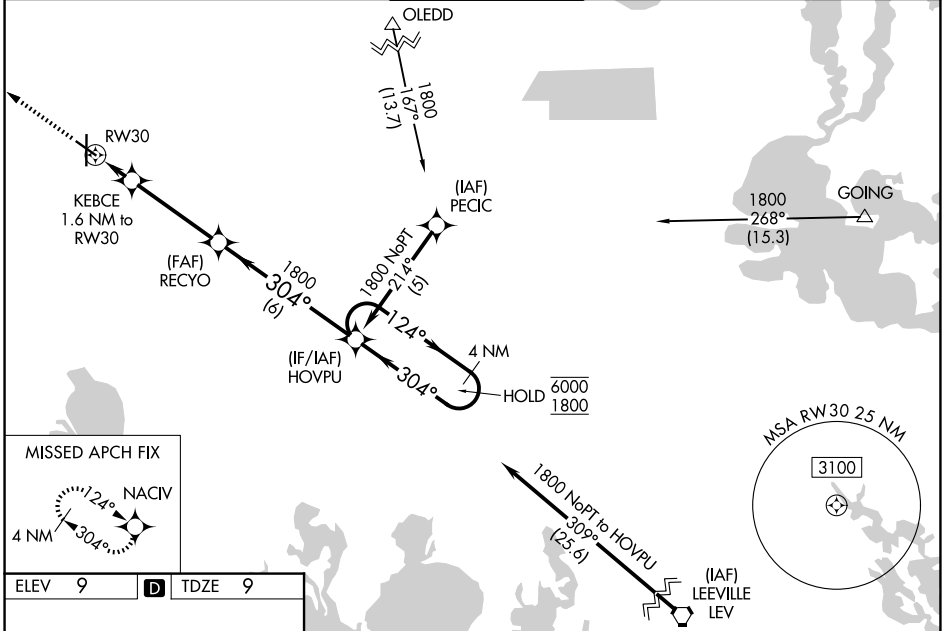
HOUMA-TERREBONNE (HUM)

RNP APCH - GPS.

⚠ For uncompensated Baro-VNAV systems, LNAV/VNAV NA below -15°C or above 54°C, Rwy 30 helicopter visibility reduction below 3/4 SM NA. Baro-VNAV and VDP NA when using MSY altimeter setting. When local altimeter setting not received, use MSY altimeter setting and increase LPV DA to 336 feet and all visibilities 1/4 SM. Increase LNAV/VNAV DA to 457 feet and all visibilities 3/8 SM. Increase all MDAs 80 feet and LNAV visibility Cat C/D 3/8 SM, and Circling visibility Cat C/D 1/4 SM.

MISSED APPROACH:
Climb to 1800 direct NACIV and hold.

ATIS 120.25	NEW ORLEANS APP CON 118.9 350.35	HOUMA TOWER ★ 125.3 (CTAF) 0 346.3	GND CON 123.875	UNICOM 122.95
-----------------------	--	--	---------------------------	-------------------------



CATEGORY	A	B	C	D
LPV DA		259-3/4	250 (300-3/4)	
LNAV/VNAV DA		380-1	371 (400-1)	
LNAV MDA		380-1	371 (400-1)	
CIRCLING	480-1	471 (500-1)	760-2 1/4 751 (800-2 1/4)	760-2 1/2 751 (800-2 1/2)

SC-4, 14 MAY 2026 to 11 JUN 2026

SC-4, 14 MAY 2026 to 11 JUN 2026