

VOR/DME TBD 117.15 Chan 118 (Y)	APP CRS 302°	Rwy Ldg 4999 TDZE 9 Apt Elev 9
---	------------------------	---

VOR RWY 30

HOUMA-TERREBONNE (HUM)

DME required.

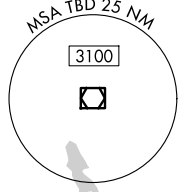
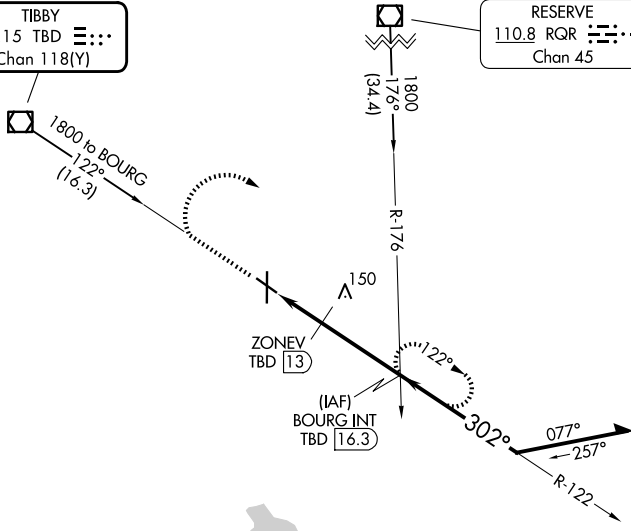
▼ Rwy 30 helicopter visibility reduction below ¾ SM NA. VDP NA when using MSY altimeter setting. When local altimeter setting not received, use MSY altimeter setting and increase all MDAs 80 feet, and S-30 and Circling visibility Cats C/D ¼ SM.

MISSED APPROACH: Climb to 1100 then climbing right turn to 1800 on TBD VOR/DME R-122 to BOURG INT/TBD 16.3 DME and hold, continue climb-in-hold to 1800.

ATIS 120.25	NEW ORLEANS APP CON 118.9 350.35	HOUMA TOWER★ 125.3 (CTAF) 346.3	GND CON 123.875	UNICOM 122.95
-----------------------	--	--	---------------------------	-------------------------

TIBBY
117.15 TBD
Chan 118(Y)

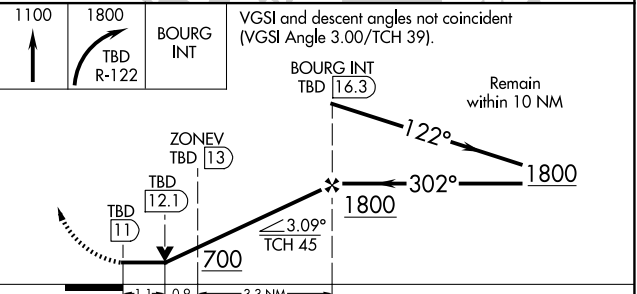
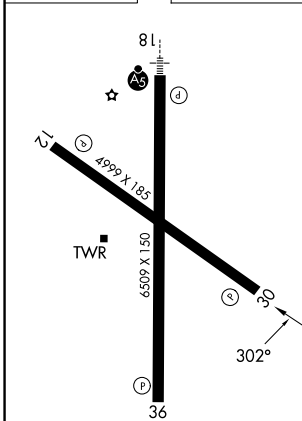
RESERVE
110.8 RQR
Chan 45



SC-4, 14 MAY 2026 to 11 JUN 2026

SC-4, 14 MAY 2026 to 11 JUN 2026

ELEV 9	D	TDZE 9
--------	----------	--------



CATEGORY	A	B	C	D
S-30	400-1	391 (400-1)	400-1½	391 (400-1½)
CIRCLING	480-1	471 (500-1)	760-2¼ 751 (800-2¼)	760-2½ 751 (800-2½)