

LOC/DME I-ISO 111.3 Chan 50	APP CRS 050°	Rwy Ldg 10960 TDZE 93 Apt Elev 93
---	------------------------	--

ILS or LOC RWY 5

KINSTON RGNL JETPORT AT STALLINGS FLD (ISO)

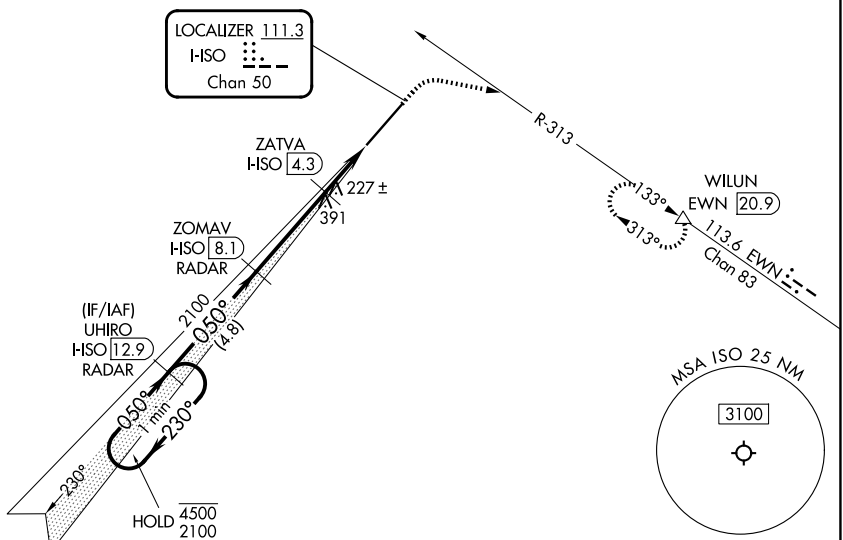
RADAR required for procedure entry. DME required.

⚠ VDP NA when using GSB altimeter setting. When local altimeter setting not received, use GSB altimeter setting and increase S-ILS 5 DA to 336 feet; increase all MDAs 60 feet and S-LOC 5 visibility Cat C/D/E to RVR 4500 and Circling visibility Cat E 1/4 SM. For inop ALS, increase S-ILS 5 Cat E visibility to RVR 4000 and S-LOC 05 Cat E visibility RVR 6000. For inop ALS when using GSB altimeter setting, increase S-ILS 5 Cat E visibility to RVR 4000 and increase S-LOC 5 Cat E visibility to 1 1/2 SM.

MALSR

MISSED APPROACH: Climb to 600 then climbing right turn to 2500 on heading 110° and on EWN VOR/DME R-313 to WILUN/EWN 20.9 DME and hold.

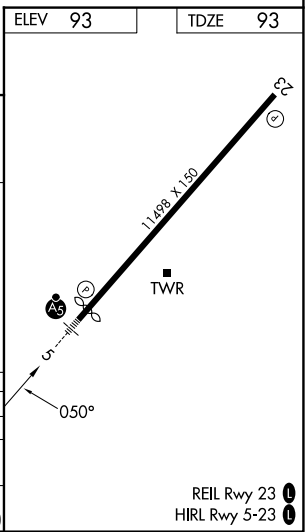
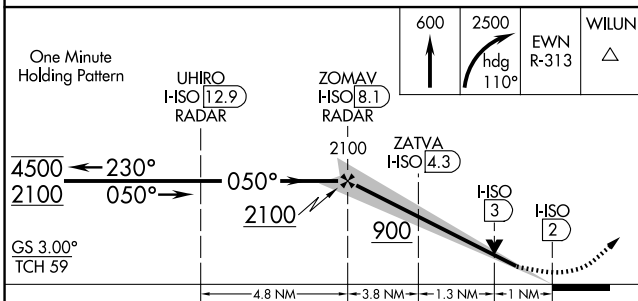
AWOS-3 132.75	SEYMOUR JOHNSON APP CON * 127.3 273.6	KINSTON TOWER * 120.6 (CTAF) 0 335.55	GND CON 121.9	UNICOM 122.95
-------------------------	---	---	-------------------------	-------------------------



SE-2, 14 MAY 2026 to 11 JUN 2026

SE-2, 14 MAY 2026 to 11 JUN 2026

ELEV 93	TDZE 93
----------------	----------------



CATEGORY	A	B	C	D	E
S-ILS 5	293/24 200 (200-1/2)				
S-LOC 5	480/24	387 (400-1/2)	480/35 387 (400-3/8)		
CIRCLING	540-1 447 (500-1)	560-1 467 (500-1)	700-1 3/4 607 (700-1 3/4)	700-2 607 (700-2)	780-2 1/2 687 (700-2 1/2)

REIL Rwy 23 **0**
HIRL Rwy 5-23 **0**

ILS or LOC RWY 5