

WAAS CH 77704 W23A	APP CRS 230°	Rwy Ldg 11498 TDZE 87 Apt Elev 93
--	------------------------	--

RNAV (GPS) RWY 23

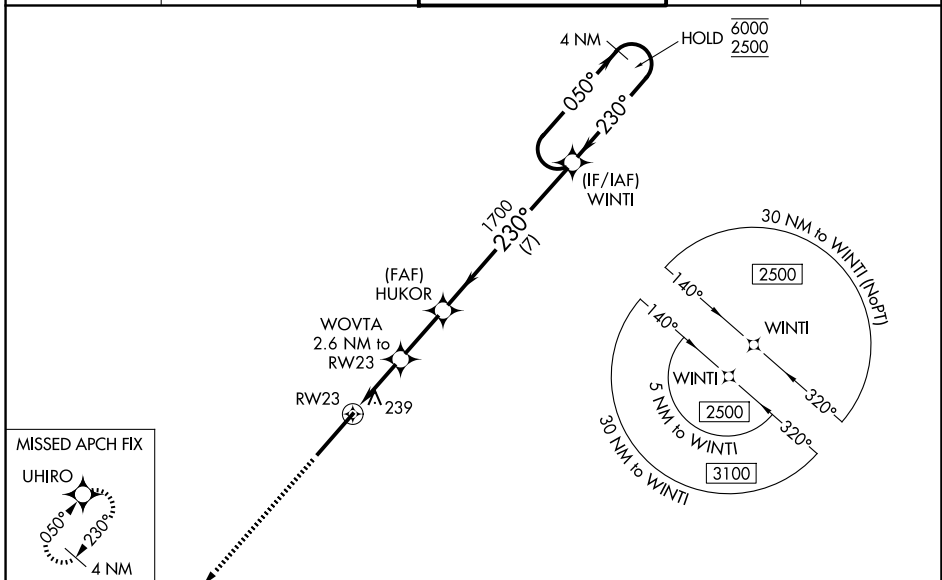
KINSTON RGNL JETPORT AT STALLINGS FLD (ISO)

RNP APCH - GPS.

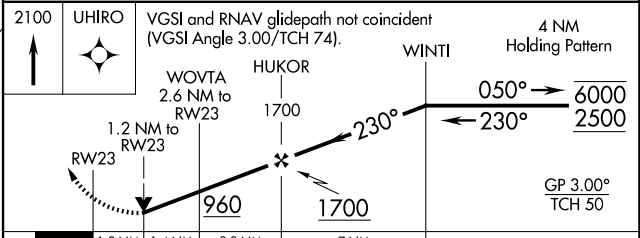
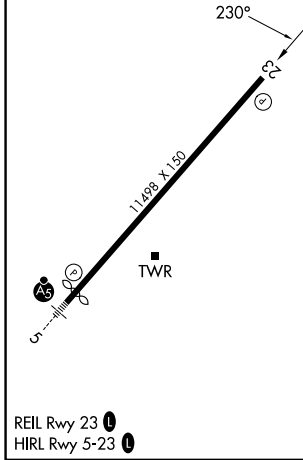
⚠ For uncompensated Baro-VNAV systems, LNAV/VNAV NA below -15°C or above 54°C. Rwy 23 helicopter visibility reduction below 3/4 SM NA. Baro-VNAV and VDP NA when using GSB altimeter setting. When local altimeter setting not received, use GSB altimeter setting and increase LPV DA to 433 feet and all visibilities 1/8 SM. Increase LNAV/VNAV DA to 480 feet and all visibilities 1/8 SM. Increase all MDAs 60 feet; and Circling visibility Cat D/E 1/4 SM.

MISSED APPROACH:
Climb to 2100 direct UHIRO and hold.

AWOS-3 132.75	SEYMOUR JOHNSON APP CON * 127.3 273.6	KINSTON TOWER * 120.6 (CTAF) 335.55	GND CON 121.9	UNICOM 122.95
-------------------------	---	---	-------------------------	-------------------------



ELEV 93	TDZE 87
----------------	----------------



CATEGORY	A	B	C	D	E
LPV DA	390-7/8		303 (300-7/8)		
LNAV/VNAV DA	437-1		350 (400-1)		
LNAV MDA	540-1	453 (500-1)		540-1 3/8	453 (500-1 3/8)
CIRCLING	540-1 447 (500-1)	560-1 467 (500-1)	700-1 3/4 607 (700-1 3/4)	740-2 647 (700-2)	780-2 1/2 687 (700-2 1/2)

RNAV (GPS) RWY 23

SE-2, 14 MAY 2026 to 11 JUN 2026

SE-2, 14 MAY 2026 to 11 JUN 2026