


WAAS CH 82004 W05A	APP CRS 050°	Rwy Ldg 10960 TDZE 93 Apt Elev 93
--	------------------------	--

RNAV (GPS) RWY 5

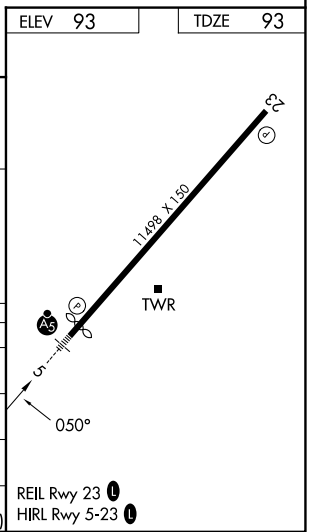
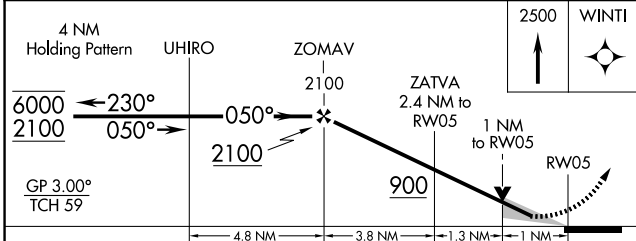
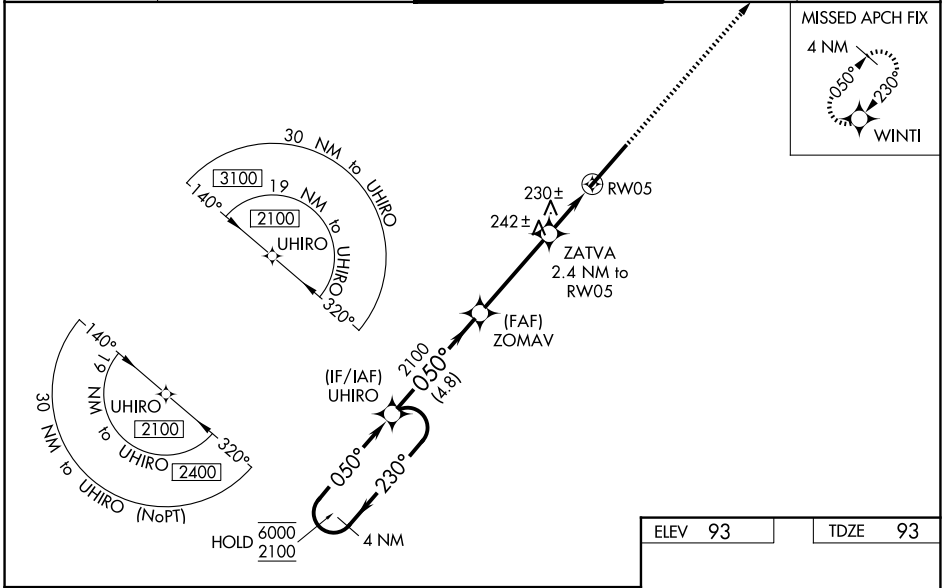
KINSTON RGNL JETPORT AT STALLINGS FLD (ISO)

RNP APCH - GPS.

⚠ For uncompensated Baro-VNAV systems, LNAV/VNAV NA below -15°C or above 54°C.
⚠ Baro-VNAV and VDP NA when using GSB altimeter setting. When local altimeter setting not received, use GSB altimeter setting and increase LPV DA to 336 feet; increase LNAV/VNAV DA to 523 feet and all visibilities to RVR 4000 increase all MDAs 60 feet and LNAV visibility Cat C/D/E to RVR 4500 and Circling visibility Cat E 1/2 SM. For inop ALS, increase LPV Cat E visibility to RVR 4000; increase LNAV/VNAV and LNAV Cat E visibility to RVR 6000. For inop ALS when using GSB altimeter setting, increase LPV Cat E visibility to RVR 4000; increase LNAV/VNAV Cat E visibility to 1 1/4 SM; increase LNAV Cat E visibility to 1 3/8 SM.
 * RVR 1800 authorized with use of FD or AP or HUD to DA (NA when using GSB altimeter setting).

MALSRL
 MISSED APPROACH:
 Climb to 2500 direct WINTI and hold.

AWOS-3 132.75	SEYMOUR JOHNSON APP CON * 127.3 273.6	KINSTON TOWER * 120.6 (CTAF) 335.55	GND CON 121.9	UNICOM 122.95
-------------------------	---	---	-------------------------	-------------------------



CATEGORY	A	B	C	D	E
LPV DA *	293/24		200 (200-1/2)		
LNAV/VNAV DA	480/35		387 (400-5/8)		
LNAV MDA	480/24	387 (400-1/2)	480/35		387 (400-5/8)
CIRCLING	540-1 447 (500-1)	560-1 467 (500-1)	700-1 3/4 607 (700-1 3/4)	700-2 607 (700-2)	780-2 1/2 687 (700-2 1/2)

RNAV (GPS) RWY 5

SE-2, 14 MAY 2026 to 11 JUN 2026

SE-2, 14 MAY 2026 to 11 JUN 2026