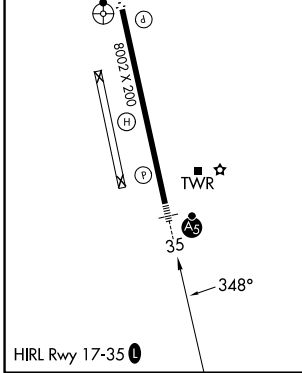
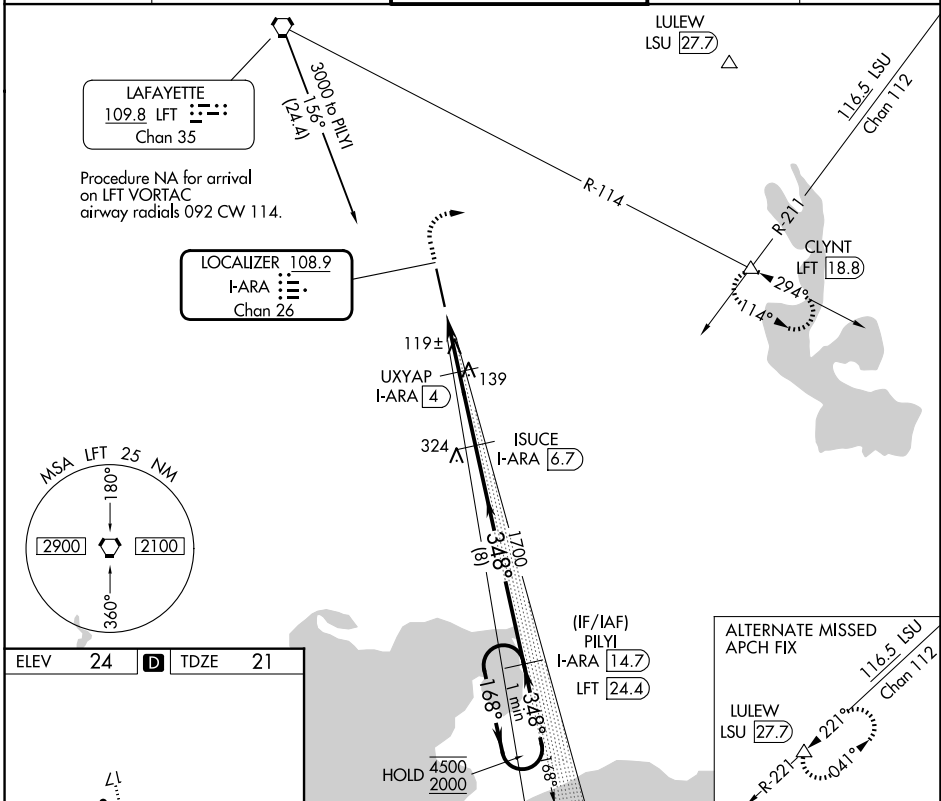


LOC/DME I-ARA <b>108.9</b> Chan <b>26</b>	APP CRS <b>348°</b>	Rwy Ldg <b>8002</b> TDZE <b>21</b> Apt Elev <b>24</b>
---	------------------------	---

# ILS or LOC RWY 35

ACADIANA RGNL (A.R.A.)

DME required for procedure entry. DME required for LOC only.		MALSR	MISSED APPROACH: Climb to 800 then climbing right turn to 2000 on heading 080° and LFT R-114 to CLYNT INT/LFT 18.8 DME and hold.
<p>⚠ Circling NA to Rwy's 17W and 35W. For inop ALS increase S-ILS 35 Cat E visibility to 3/4 SM and S-LOC 35 Cats C/D/E visibility to 1 1/2 SM.</p>			
ASOS <b>133.325</b>	LAFAYETTE APP CON★ <b>121.1 268.7</b>	ACADIANA TOWER★ <b>125.0 (CTAF) 0 239.3</b>	GND CON <b>121.7</b>
			UNICOM <b>122.95</b>



ELEV 24	<b>D</b>	TDZE 21			
800	2000	LFT	CLYNT	PILIY	One Minute Holding Pattern
↑	hdg 080°	R-114	△	ISUCE I-ARA [6.7]	
*LOC only.					
I-ARA [1.6]	*I-ARA [2.6]	UXYAP I-ARA [4]	1700	348°	168° → 4500
			480*	1700	← 348° 2000
			1 NM	1.4 NM	2.7 NM
			8 NM	GS 3.00° TCH 5T	
CATEGORY	A	B	C	D	E
S-ILS 35	221-1/2 200 (200-1/2)				
S-LOC 35	440-3/4 419 (500-3/4)				
CIRCLING	440-1 416 (500-1)	480-1 456 (500-1)	600-1 1/2 576 (600-1 1/2)	680-2 656 (700-2)	900-3 876 (900-3)

SC-4, 14 MAY 2026 to 11 JUN 2026

SC-4, 14 MAY 2026 to 11 JUN 2026