

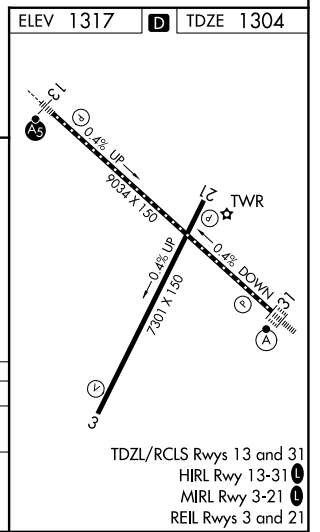
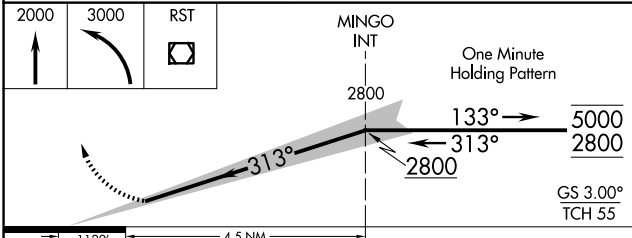
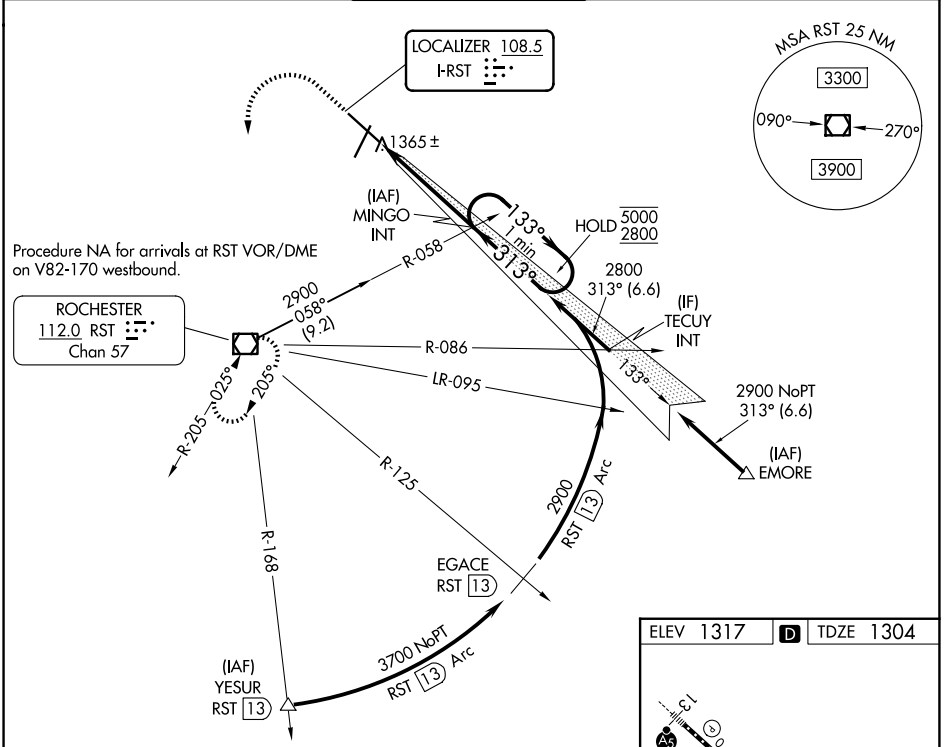
LOC I-RST 108.5	APP CRS 313°	Rwy Ldg TDZE Apt Elev	9033 1304 1317
---------------------------	------------------------	-----------------------------	---

ILS Z RWY 31 (CAT II)

ROCHESTER INTL (RST)

DME required for procedure entry at YESUR.		ALSIF-2	MISSED APPROACH: Climb to 2000 then climbing left turn to 3000 direct RST VOR/DME and hold.	
▼ Procedure NA when tower closed.		(A)		

ATIS 120.5	ROCHESTER APP CON* 119.8 251.125	ROCHESTER TOWER* 118.3 (CTAF) 257.8	GND CON 121.9	UNICOM 122.95
----------------------	--	---	-------------------------	-------------------------



CATEGORY	A	B	C	D
S-ILS 31	RA 104/12 100 DA 1404			
CATEGORY II ILS - SPECIAL AIRCREW & AIRCRAFT CERTIFICATION REQUIRED				

NC-1, 14 MAY 2026 to 11 JUN 2026

NC-1, 14 MAY 2026 to 11 JUN 2026