

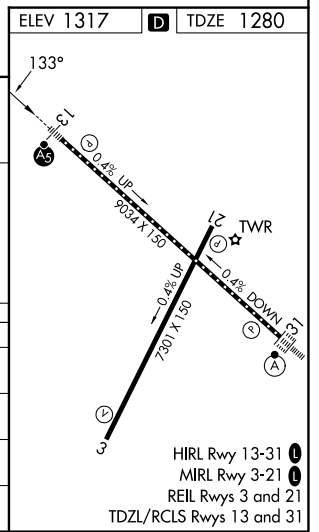
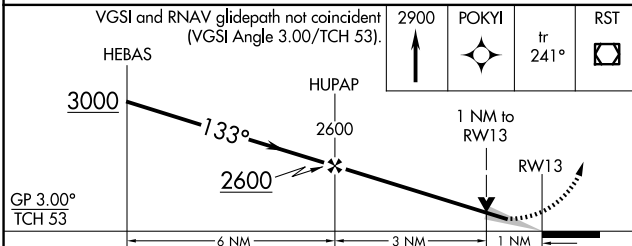
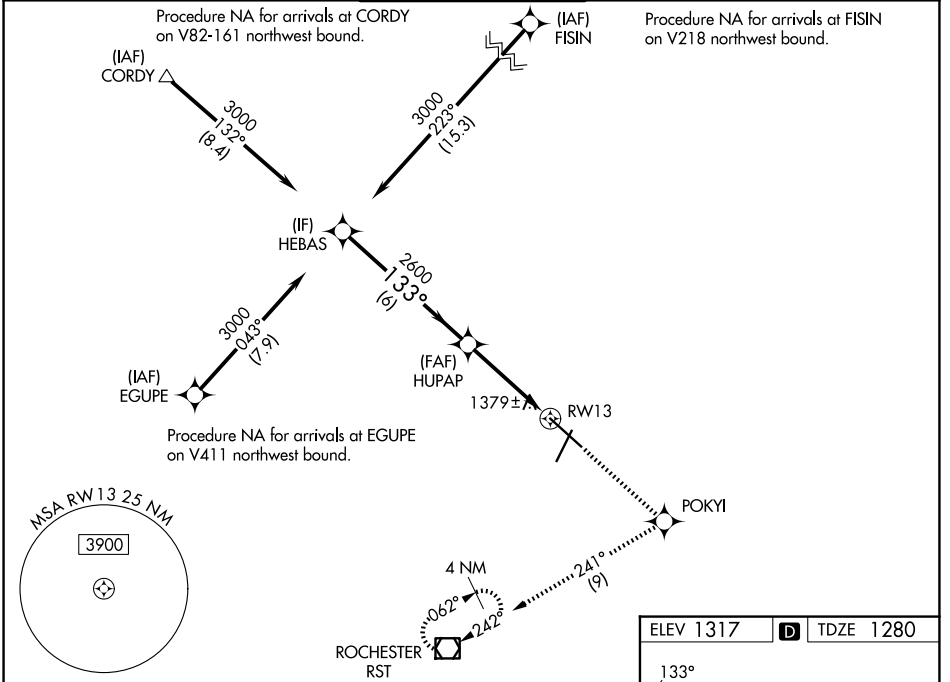
WAAS CH 90202 W13A	APP CRS 133°	Rwy Ldg TDZE Apt Elev	9033 1280 1317
--	------------------------	-----------------------------	---

RNAV (GPS) RWY 13

ROCHESTER INTL (RST)

RNP APCH - GPS.	MALSR	MISSED APPROACH: Climb to 2900 direct POKYI and on track 241° to RST VOR/DME and hold.
-----------------	-------	--

ATIS 120.5	ROCHESTER APP CON* 119.8 251.125	ROCHESTER TOWER* 118.3 (CTAF) 257.8	GND CON 121.9	UNICOM 122.95
----------------------	--	---	-------------------------	-------------------------



CATEGORY	A	B	C	D
LPV DA	1530/18		250 (300-½)	
LNAV/VNAV DA	1679/50		399 (400-1)	
LNAV MDA	1640/24	360 (400-½)	1640/30 360 (400-¾)	1640/50 360 (400-1)
CIRCLING	1720-1 403 (500-1)	1780-1 463 (500-1)	1900-1½ 583 (600-1½)	1900-2 583 (600-2)

NC-1, 14 MAY 2026 to 11 JUN 2026

NC-1, 14 MAY 2026 to 11 JUN 2026