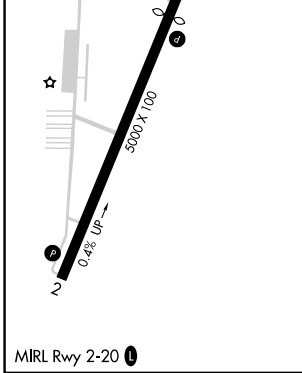
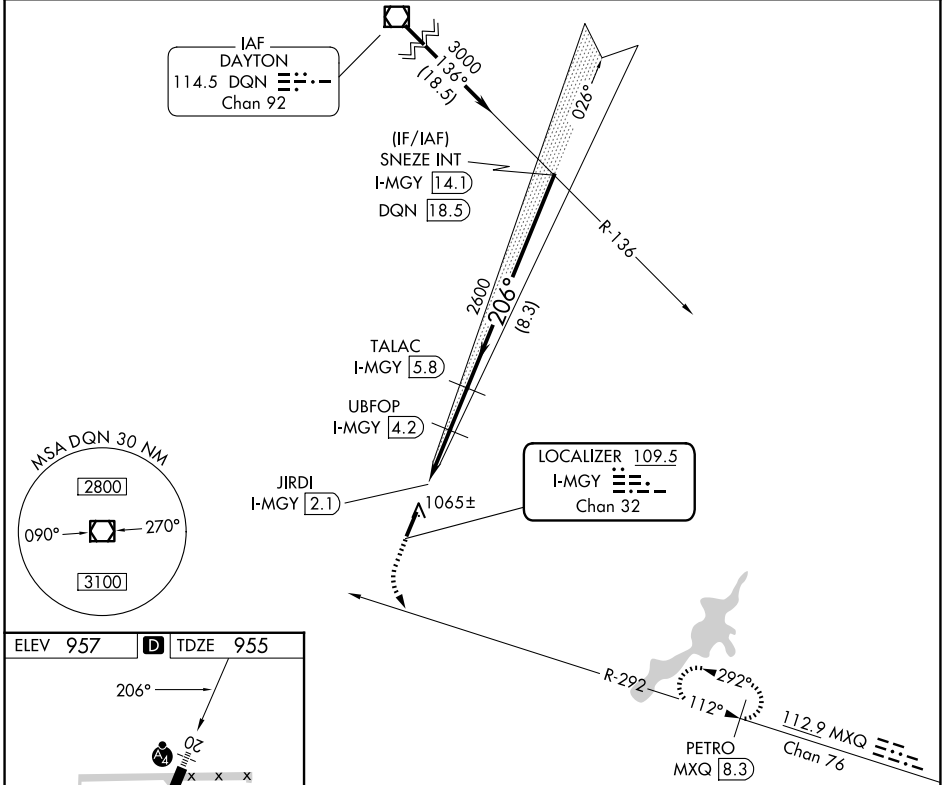


LOC/DME I-MGY <b>109.5</b> Chan <b>32</b>	APP CRS <b>206°</b>	Rwy Ldg <b>4410</b> TDZE <b>955</b> Apt Elev <b>957</b>
---	------------------------	---

# LOC RWY 20

DAYTON/WRIGHT BROTHERS (MGY)

DME required.		MALS	MISSED APPROACH: Climb to 1600 then climbing left turn to 3000 on heading 118° and MXQ VOR/DME R-292 to PETRO MXQ 8.3 DME and hold.
ASOS <b>118.375</b>	COLUMBUS APP CON <b>118.85 269.275</b>	CLNC DEL <b>119.4</b>	UNICOM <b>122.8 (CTAF) 0</b>



1600	3000	MXQ R-292	PETRO MXQ 8.3	TALAC I-MGY 5.8	SNEZE INT I-MGY 14.1
↑	hdg 118°				3000
JIRDI I-MGY 2.1		UBFOP I-MGY 4.2	TALAC I-MGY 5.8	SNEZE INT I-MGY 14.1	
2040		3.04° TCH 40	2600	206°	
1.2	2.1 NM	1.6 NM	8.3 NM		
CATEGORY	A	B	C	D	
S-LOC 20		1320-1½	365 (400-1½)		
CIRCLING	1440-1½ 483 (500-1½)	1520-1½ 563 (600-1½)	1660-2 703 (800-2)	1660-2¼ 703 (800-2¼)	